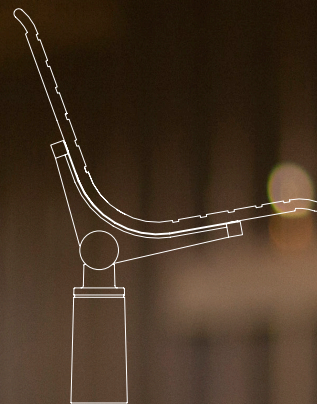




## TECNO RS SEATING SYSTEM

PRODUCT DATA





## TECNO RS SEATING SYSTEM

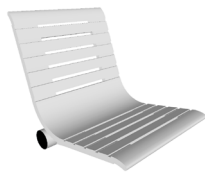
PRODUCT DATA

The **Tecno RS Seating System** offers stylish and extremely durable seating optimized for public transit and other high-use environments. Made from rugged die-cast aluminum, the system is based on a series of interchangeable components that all attach to a single beam. Three different seat styles and a multitude of configuration options make Tecno RS ideal for a diverse range of applications.

### MATERIAL & CONSTRUCTION DETAILS

#### SEAT MATERIALS & CONFIGURATIONS

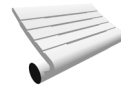
- Backed, backless, and perch seats are made of die-cast aluminum with powdercoat finish.
- Standard benches are configured in lengths of two to five seats. Longer lengths are available on a custom basis.
- Individual bench units can be joined together to form long, continuous rows. A back-to-back linking element is also available.



**Backed Seat**  
powdercoated die-cast aluminum



**Backless Seat**  
powdercoated die-cast aluminum



**Perch Seat**  
powdercoated die-cast aluminum



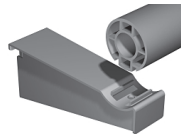
**Back-to-Back Linking Element**  
powdercoated steel

#### MOUNTING LEG OPTIONS

- Cylindrical mounting posts are made of die-cast aluminum and are available for surface-mounted backed and backless benches. Standard mounting uses a single 16 mm adhesive-set threaded anchor.
- Perch legs are available for surface mounted perch benches. Tubular construction allows leg height to be varied to suit varying requirements.
- Wall mount brackets are made of steel and are available for wall-mounting backed, backless or perch benches to a suitable substrate. Please call to discuss design and engineering considerations.



**Cylindrical Mounting Post**  
powdercoated die-cast aluminum



**Wall-Mount Bracket**  
powdercoated steel

#### OPTIONAL ARMRESTS

- Optional die-cast aluminum armrests can be specified in a full powdercoat finish or in a partial powdercoat finish with clear-coated polished aluminum upper surface.
- Horizontal armrests are available for backed benches; low-profile horizontal armrests are available for backless benches.
- Armrests are can be mounted between seats and/or at bench ends.



**Horizontal Armrest for Backed Benches**  
powdercoated die-cast aluminum



**Low-Profile Horizontal Armrest for Backless Benches**  
powdercoated die-cast aluminum

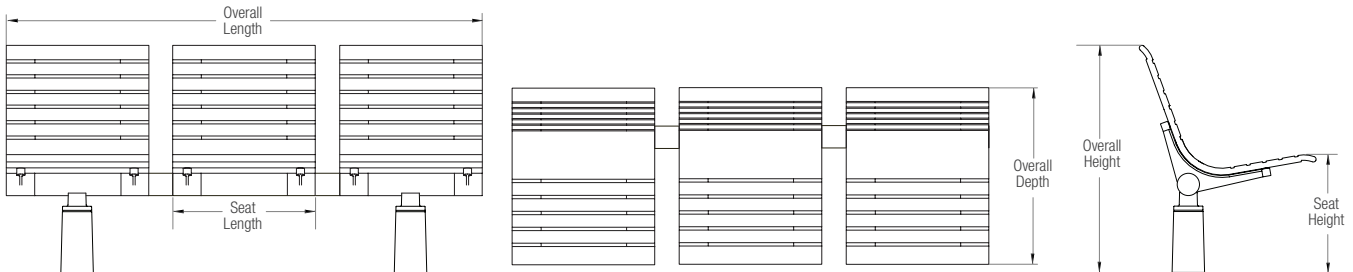


# TECNO RS SEATING SYSTEM

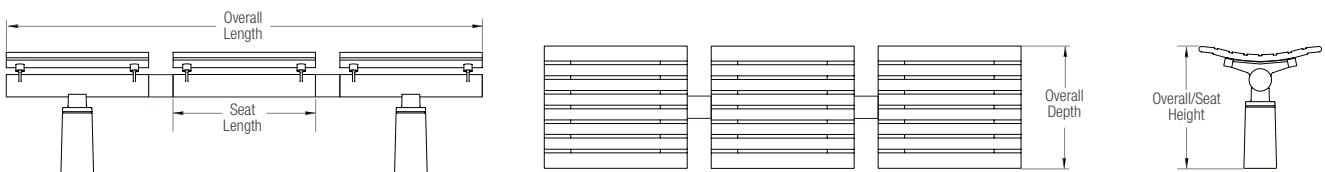
PRODUCT DATA

<p><b>FINISHES</b></p> <ul style="list-style-type: none"> <li>• Die-cast aluminum seats, posts, rails, and frames have a powdercoat finish.</li> <li>• Die-cast aluminum armrests can be specified in a full powdercoat finish or in a partial powdercoat finish with clear-coated polished aluminum upper surface.</li> <li>• See the Forms+Surfaces Powdercoat Chart for details. Custom RAL colors are available for an upcharge.</li> <li>• Due to the inherent nature of metal castings, gloss powdercoat is not offered for cast components.</li> </ul>	<p><b>INSTALLATION</b></p> <ul style="list-style-type: none"> <li>• Benches are shipped with the structural beam, seat supports, and armrests pre-assembled as a single unit. Seats and legs are packed separately for ease of shipment and are simply bolted to the structure to complete assembly.</li> <li>• Stainless steel anchors and mounting bolts are sold separately.</li> </ul>
<p><b>ERGONOMICS</b></p> <ul style="list-style-type: none"> <li>• The shape of RS seats was developed to support the natural contours of the human body. The waterfall seat front eliminates compression on the underside of the knees. Slotted seats provide ventilation. The wide range of seat styles allow the system to be tailored to varying comfort requirements for short or long-term waiting.</li> </ul>	<p><b>MAINTENANCE</b></p> <ul style="list-style-type: none"> <li>• Metal surfaces can be cleaned as needed using a soft cloth or brush with warm water and a mild detergent. Avoid abrasive cleaners.</li> </ul>

## NOMINAL DIMENSIONS (for models using cylindrical mounting posts)



MODEL	LEGS	OVERALL LENGTH	SEAT LENGTH	OVERALL DEPTH	OVERALL HEIGHT	SEAT HEIGHT	MOUNTING POST C.C.
SBTRS-2B-C(B)	2	44.5" (1130 mm)	20.5" (520 mm)	25.7" (653 mm)	33.1" (840 mm)	17.1" (435 mm)	24.0" (610 mm)
SBTRS-3B-C(B)	2	68.5" (1740 mm)	20.5" (520 mm)	25.7" (653 mm)	33.1" (840 mm)	17.1" (435 mm)	48.0" (1220 mm)
SBTRS-4B-C(B)	2	92.5" (2350 mm)	20.5" (520 mm)	25.7" (653 mm)	33.1" (840 mm)	17.1" (435 mm)	72.0" (1830 mm)
SBTRS-5B-C(B)	3	116.5" (2960 mm)	20.5" (520 mm)	25.7" (653 mm)	33.1" (840 mm)	17.1" (435 mm)	48.0" x 2



MODEL	LEGS	OVERALL LENGTH	SEAT LENGTH	OVERALL DEPTH	OVERALL HEIGHT	SEAT HEIGHT	MOUNTING POST C.C.
SBTRS-2L-C(B)	2	44.5" (1130 mm)	20.5" (520 mm)	17.7" (450 mm)	17.5" (445 mm)	17.5" (445 mm)	24.0" (610 mm)
SBTRS-3L-C(B)	2	68.5" (1740 mm)	20.5" (520 mm)	17.7" (450 mm)	17.5" (445 mm)	17.5" (445 mm)	48.0" (1219 mm)
SBTRS-4L-C(B)	2	92.5" (2350 mm)	20.5" (520 mm)	17.7" (450 mm)	17.5" (445 mm)	17.5" (445 mm)	72.0" (1829 mm)
SBTRS-5L-C(B)	3	116.5" (2960 mm)	20.5" (520 mm)	17.7" (450 mm)	17.5" (445 mm)	17.5" (445 mm)	48.0" x 2

NOTE: External armrests add 7" to overall length.

T 800.451.0410 | [www.forms-surfaces.com](http://www.forms-surfaces.com)

**FORMS+SURFACES®**

© 2021 Forms+Surfaces® | All dimensions are nominal. Specifications and pricing subject to change without notice. For the most current version of this document, please refer to our website at [www.forms-surfaces.com](http://www.forms-surfaces.com).

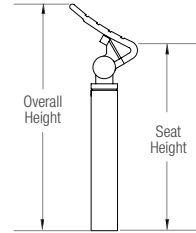
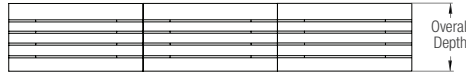
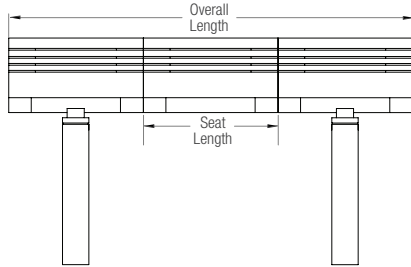




# TECNO RS SEATING SYSTEM

PRODUCT DATA

## NOMINAL DIMENSIONS (for perch models)



MODEL	LEGS	OVERALL LENGTH	SEAT LENGTH	OVERALL DEPTH	OVERALL HEIGHT	SEAT HEIGHT	MOUNTING POST C.C.
SBTRS-2P-PB	2	40.4" (1025 mm)	20.1" (510 mm)	10.1" (257 mm)	33.9" (860 mm)	28.3" (718 mm)	20.3" (515 mm)
SBTRS-3P-PB	2	60.6" (1540 mm)	20.1" (510 mm)	10.1" (257 mm)	33.9" (860 mm)	28.3" (718 mm)	40.5" (1030 mm)
SBTRS-4P-PB	2	80.9" (2055 mm)	20.1" (510 mm)	10.1" (257 mm)	33.9" (860 mm)	28.3" (718 mm)	60.8" (1545 mm)
SBTRS-5P-PB	3	101.2" (2570 mm)	20.1" (510 mm)	10.1" (257 mm)	33.9" (860 mm)	28.3" (718 mm)	40.5" x 2

## MODEL NUMBERS AND DESCRIPTIONS

MODEL	DESCRIPTION
SBTRS-2B-C	Tecno RS Seating System, 2 die-cast aluminum seats, backed, cylindrical mounting post
SBTRS-3B-C	Tecno RS Seating System, 3 die-cast aluminum seats, backed, cylindrical mounting post
SBTRS-4B-C	Tecno RS Seating System, 4 die-cast aluminum seats, backed, cylindrical mounting post
SBTRS-5B-C	Tecno RS Seating System, 5 die-cast aluminum seats, backed, cylindrical mounting post
SBTRS-2B-WM	Tecno RS Seating System, 2 die-cast aluminum seats, backed, wall mount
SBTRS-3B-WM	Tecno RS Seating System, 3 die-cast aluminum seats, backed, wall mount
SBTRS-4B-WM	Tecno RS Seating System, 4 die-cast aluminum seats, backed, wall mount
SBTRS-5B-WM	Tecno RS Seating System, 5 die-cast aluminum seats, backed, wall mount
SBTRS-2L-C	Tecno RS Seating System, 2 die-cast aluminum seats, backless, cylindrical mounting post
SBTRS-3L-C	Tecno RS Seating System, 3 die-cast aluminum seats, backless, cylindrical mounting post
SBTRS-4L-C	Tecno RS Seating System, 4 die-cast aluminum seats, backless, cylindrical mounting post
SBTRS-5L-C	Tecno RS Seating System, 5 die-cast aluminum seats, backless, cylindrical mounting post
SBTRS-2L-WM	Tecno RS Seating System, 2 die-cast seats, backless, wall mount
SBTRS-3L-WM	Tecno RS Seating System, 3 die-cast seats, backless, wall mount
SBTRS-4L-WM	Tecno RS Seating System, 4 die-cast seats, backless, wall mount
SBTRS-5L-WM	Tecno RS Seating System, 5 die-cast seats, backless, wall mount
SBTRS-2P-PB	Tecno RS Seating System, 2 die-cast aluminum perch seats, cylindrical mounting post
SBTRS-3P-PB	Tecno RS Seating System, 3 die-cast aluminum perch seats, cylindrical mounting post
SBTRS-4P-PB	Tecno RS Seating System, 4 die-cast aluminum perch seats, cylindrical mounting post
SBTRS-5P-PB	Tecno RS Seating System, 5 die-cast aluminum perch seats, cylindrical mounting post



## TECNO RS SEATING SYSTEM

PRODUCT DATA

### PRODUCT OPTIONS

The following options are available for an upcharge

Horizontal armrest for backed benches	Back-to-back bench linking element
Low-profile horizontal armrest for backless benches	Custom RAL powdercoat color
Stainless steel anchors and mounting bolts	

### ENVIRONMENTAL CONSIDERATIONS

- Please refer to the Tecno RS Seating System Environmental Data Sheet for detailed environmental impact information.
- All components are fully recyclable.
- Standard powdercoat finishes are no-VOC; non-standard powdercoat finishes are no- or low-VOC, depending on color.
- Low maintenance.

**LEAD TIME:** 6 to 8 weeks. Shorter lead times may be available upon request. Please contact us to discuss your specific timing requirements.

**PRICING:** Please contact us at **800.451.0410** or **sales@forms-surfaces.com**. At Forms+Surfaces, we design, manufacture and sell our products directly to you. Our sales team is available to assist you with questions about our products, requests for quotes, and orders. Territory Managers are located worldwide to assist with the front-end specification and quoting process, and our in-house Project Sales Coordinators follow your project through from the time you place an order to shipment.

**TO ORDER SPECIFY:** Quantity, model, mounting option, seat finish, armrest style (if applicable), powdercoat color, and linking element. Quote/Order Forms are available on our website to lead you through the specification process in a simple checkbox format.