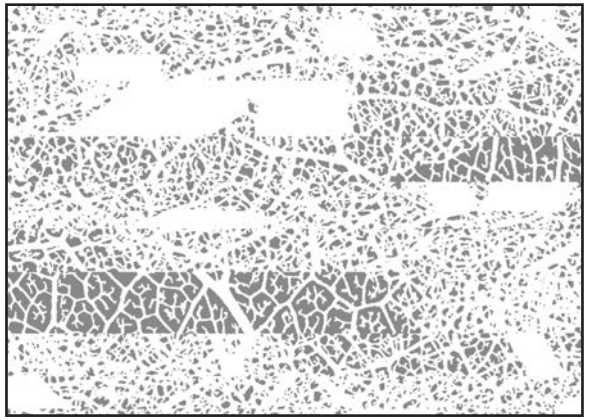
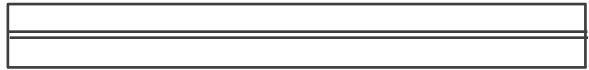


FULL SHEET PATTERN ORIENTATION



DETAIL 1:1



PROFILE 1:1



SWATCH

PART #: VGR6035
 MATERIAL: VIVISPECTRA ELEMENTS
 PATTERN: UMBRA
 CONFIGURATION: VIEW
 SHEET SIZE: 60" X 120" X .300"
 (1524 mm X 3048 mm X 7.6 mm)

APPROVED BY: _____

QTY: _____

| | | | | | |
|---|--|--|-------|--|----------|
| UNLESS OTHERWISE SPECIFIED, DIMENSIONS ARE IN INCHES | | FORMS+SURFACES | | 30 Pine Street, Pittsburgh, PA 15223 Tel (800) 451-0410 Fax(412) 781-7840 | |
| TOLERANCES (UNLESS OTHERWISE SPECIFIED): FRACTIONAL: ±1/8 ANGULAR/BEND: ±1° TWO PLACE DECIMAL: ±.030 THREE PLACE DECIMAL: ±.020 | | NAME | DATE | DESCRIPTION: | |
| MATERIAL: VIVISPECTRA ELEMENTS | | DWN | JS | 10/25/2016 | |
| PATTERN: UMBRA | | DO NOT SCALE DRAWING | | VIVIDGLASS | |
| WEIGHT: - | | PROPRIETARY AND CONFIDENTIAL | | SIZE | DWG. NO. |
| SOURCE: - | | THE INFORMATION CONTAINED IN THIS DRAWING IS THE SOLE PROPERTY OF FORMS+SURFACES. ANY REPRODUCTION IN PART OR AS A WHOLE WITHOUT WRITTEN PERMISSION IS PROHIBITED. | | B | |
| SCALE: N.T.S | | REV | SHEET | 000 | 1 OF 1 |