

# LIGHT COLUMN BOLLARD

SECURITY BOLLARD WIRING & INSTALLATION INSTRUCTIONS

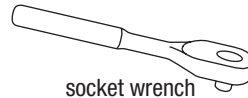
## MATERIALS INCLUDED



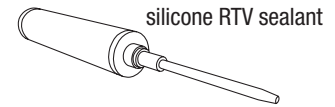
## TOOLS NEEDED



3/4" socket



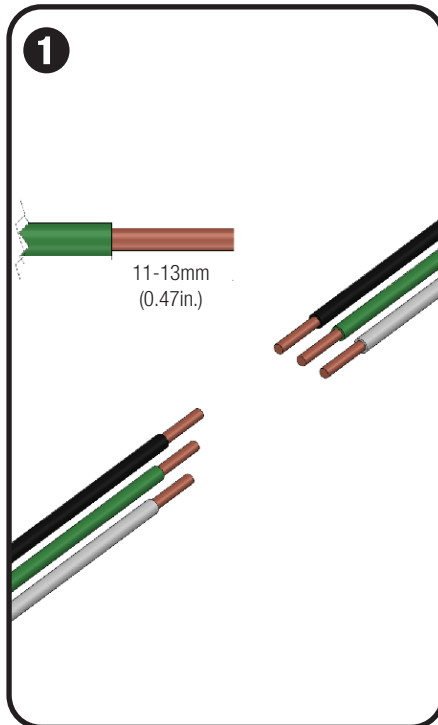
socket wrench



silicone RTV sealant

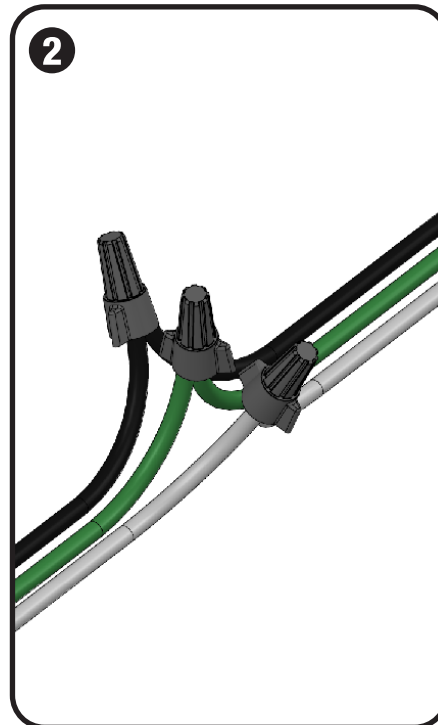
## STEP BY STEP

### WIRING INSTRUCTIONS FOR ALL ILLUMINATED LIGHT COLUMN BOLLARDS WITH EMBEDDED SECURITY CORES



#### Locate and prepare wires

- Before proceeding with wiring of luminary, check to ensure that all applicable site wiring and safety codes have been followed.
- Locate wires at base of light fixture.
- Ensure power supply is shut off and circuit being used is isolated.
- Prepare wiring from site junction box and bollard by stripping and removing 11-13mm (.47") of insulation.



#### Connect wires

- Insert ground (green), neutral (white), and positive (black) wires into provided wire nuts, being sure to match wire color codes from junction box to bollard.
- Tighten wire nuts until exposed wire ends are below bottom of wire nut.
- Inspect all wiring and connections before.

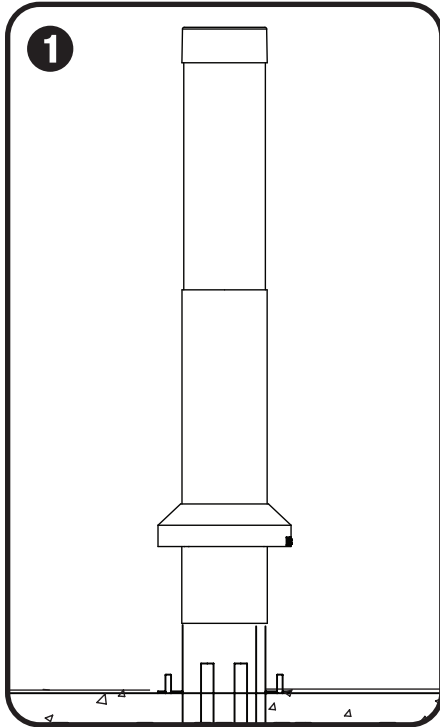
#### NOTES:

- Installation should be performed only by qualified individuals.
- Wire used should be 22-14 AWG copper conductors.
- Caution: Installation of a surge protector as part of each unit's wiring is recommended. Light fixture rated for 120-277 VAC power.

# LIGHT COLUMN BOLLARD

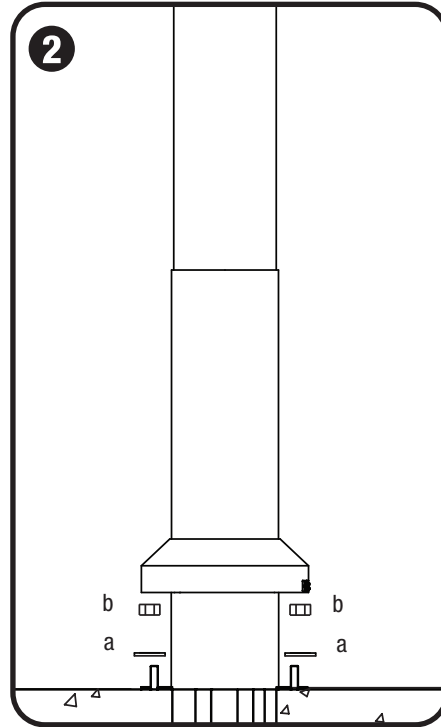
SECURITY BOLLARD WIRING & INSTALLATION INSTRUCTIONS

## STEP BY STEP INSTALLATION INSTRUCTIONS FOR ALL LIGHT COLUMN BOLLARDS WITH EMBEDDED SECURITY CORES



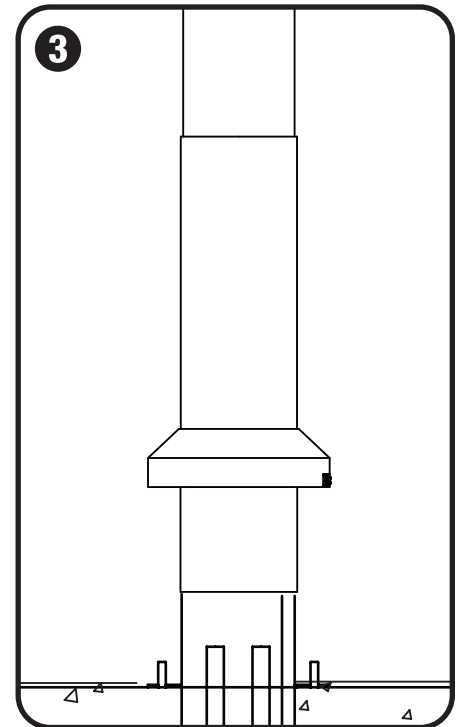
### Position bollard over security core

- Inspect security core for moisture. If moisture is present, dry immediately before installing fixture. Do not install fixture unless security core is completely dry.
- Slide bollard over security core so threaded pegs slide through holes in bollard base plate.
- Carefully use masking tape to tape escutcheon cover further up the body until installation is complete.



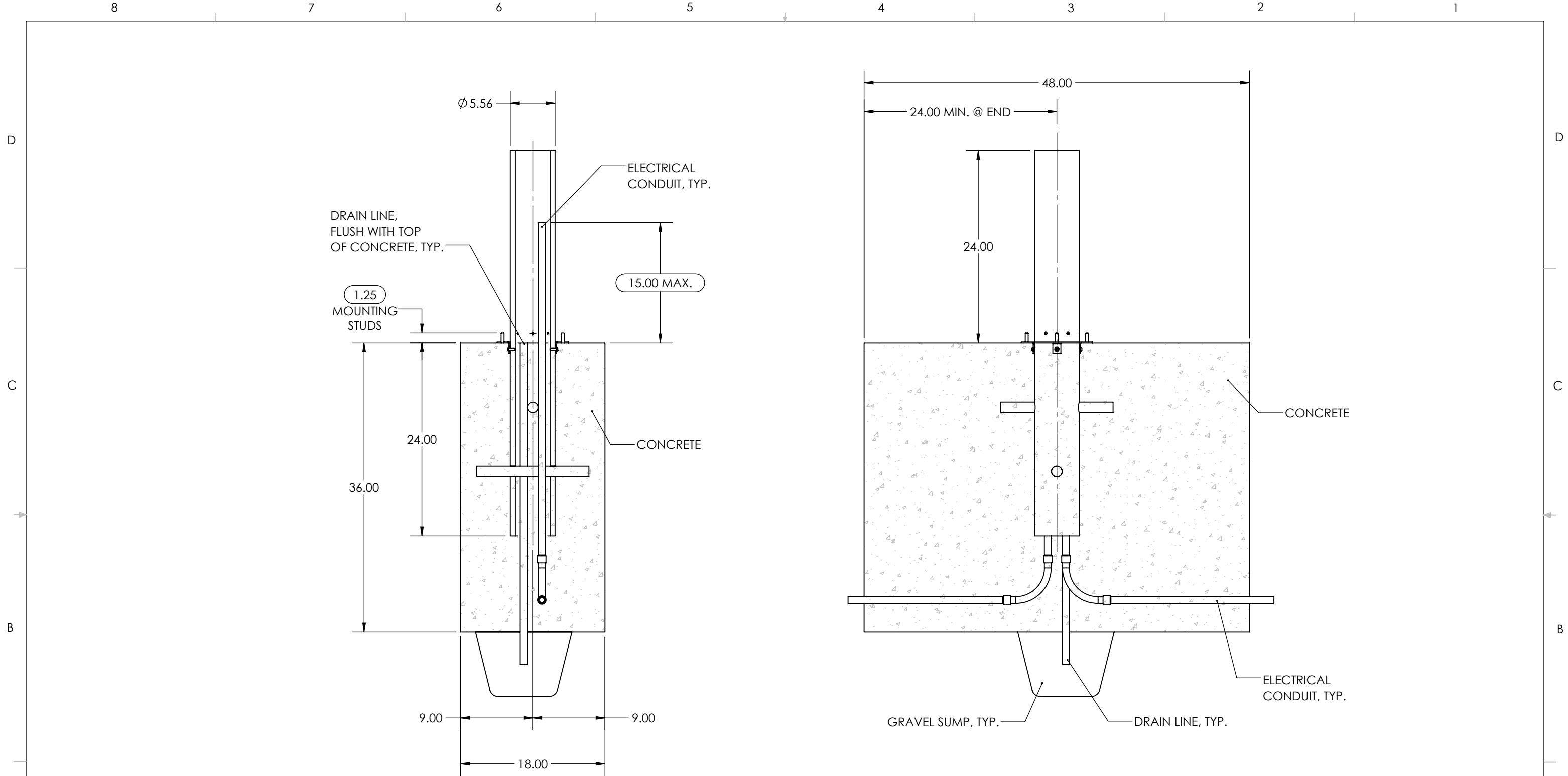
### Attach bollard to security core

- Slide 1/2" washer (a), then thread 1/2"-13 nut (b) onto each threaded peg.
- Use 3/4" socket and socket wrench to tighten all nuts until snug.



### Apply sealant to permanently attach escutcheon cover (optional) and lower onto base

- Apply a thick bead of silicone RTV sealant around the vertical edge of the base plate.  
NOTE: Leave four 1/2" gaps to allow for water drainage.
- Lower escutcheon cover to ground level and wipe away any excess sealant.



**END VIEW (PARTIAL SECTION)**

**SIDE VIEW (PARTIAL SECTION)**

**NOTES:**

1. FOOTINGS HAVE BEEN DESIGNED TO BEAR ON UNDISTURBED SOIL OR PROPERLY COMPACTED ENGINEERED FILL ASSUMING A NET BEARING CAPACITY OF 3000 PSF.
2. CONCRETE WORK SHALL BE DONE IN ACCORDANCE WITH THE "BUILDING CODE REQUIREMENTS FOR REINFORCED CONCRETE" (ACI 318) AND THE SPECIFICATIONS FOR STRUCTURAL CONCRETE (ACI 301) OF THE AMERICAN CONCRETE INSTITUTE (EDITIONS AS REQUIRED BY GOVERNING CODE).
3. CAST-IN-PLACE CONCRETE SHALL BE NORMAL WEIGHT CONCRETE WITH A MINIMUM 28-DAY COMPRESSIVE STRENGTH (F'C) OF 5000 PSI UNO.
4. PROVIDE 6% (+/-1.5%) AIR ENTRAINMENT IN CONCRETE EXPOSED TO FREEZE/THAW.

0	INITIAL RELEASE	-----	-----
REV.	DESCRIPTION	REVISED BY	DATE

**UNLESS OTHERWISE SPECIFIED:**  
 1. PRIMARY DIM. ARE IN INCHES & SECONDARY [DIM] IN MM  
 2. TOLERANCES  
 FRACTIONAL: ±1/32; ANGULAR/BEND: ±1°  
 TWO PLACE DECIMAL ±.030  
 THREE PLACE DECIMAL ±.020  
 3. REMOVE ALL BURRS AND SHARP EDGES

THIRD ANGLE PROJECTION

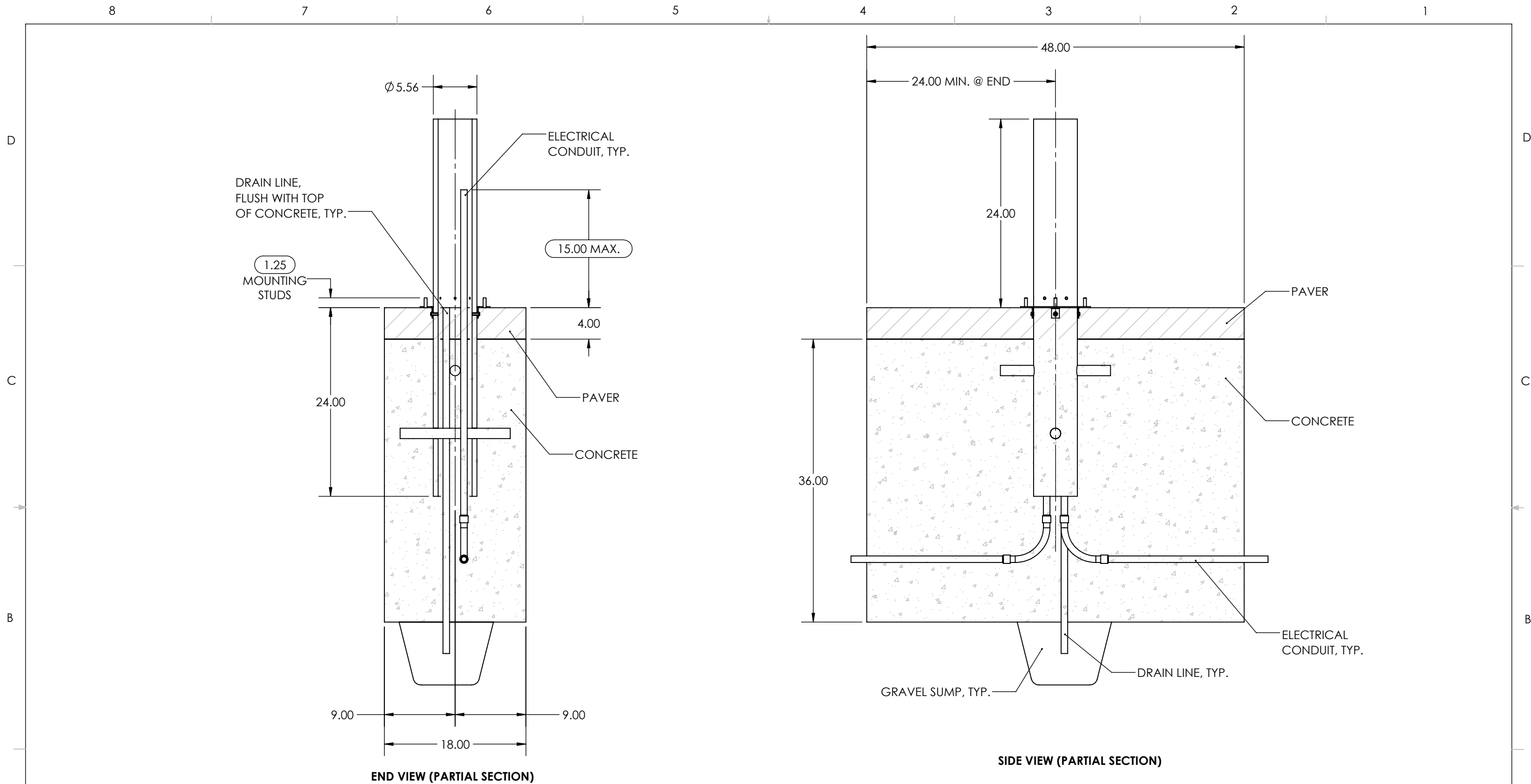
MATERIAL: N/A

FINISH: N/A

WEIGHT: N/A

SCALE: NOT TO SCALE

		30 Pine Street, Pittsburgh, PA 15223 Tel (412) 781-9003 Fax (412) 781-7840	
		NAME	DATE
DWN	YAF	5/23/3023	<b>DESCRIPTION:</b> <b>FORMS+SURFACES</b> <b>S10-P1 SECURITY CORE, LIGHT COLUMN</b> <b>INDIVIDUAL FOUNDATION, NO PAVER</b>
CHK			
DO NOT SCALE DRAWING			SIZE DWG. NO. REV SHEET B S10-DP-IND-NP-LBLCB-INSTALL 0 1 OF 1
<b>PROPRIETARY AND CONFIDENTIAL</b> THE INFORMATION CONTAINED IN THIS DRAWING IS THE SOLE PROPERTY OF FORMS + SURFACES. ANY REPRODUCTION IN PART OR AS A WHOLE WITHOUT WRITTEN PERMISSION IS PROHIBITED.			



END VIEW (PARTIAL SECTION)

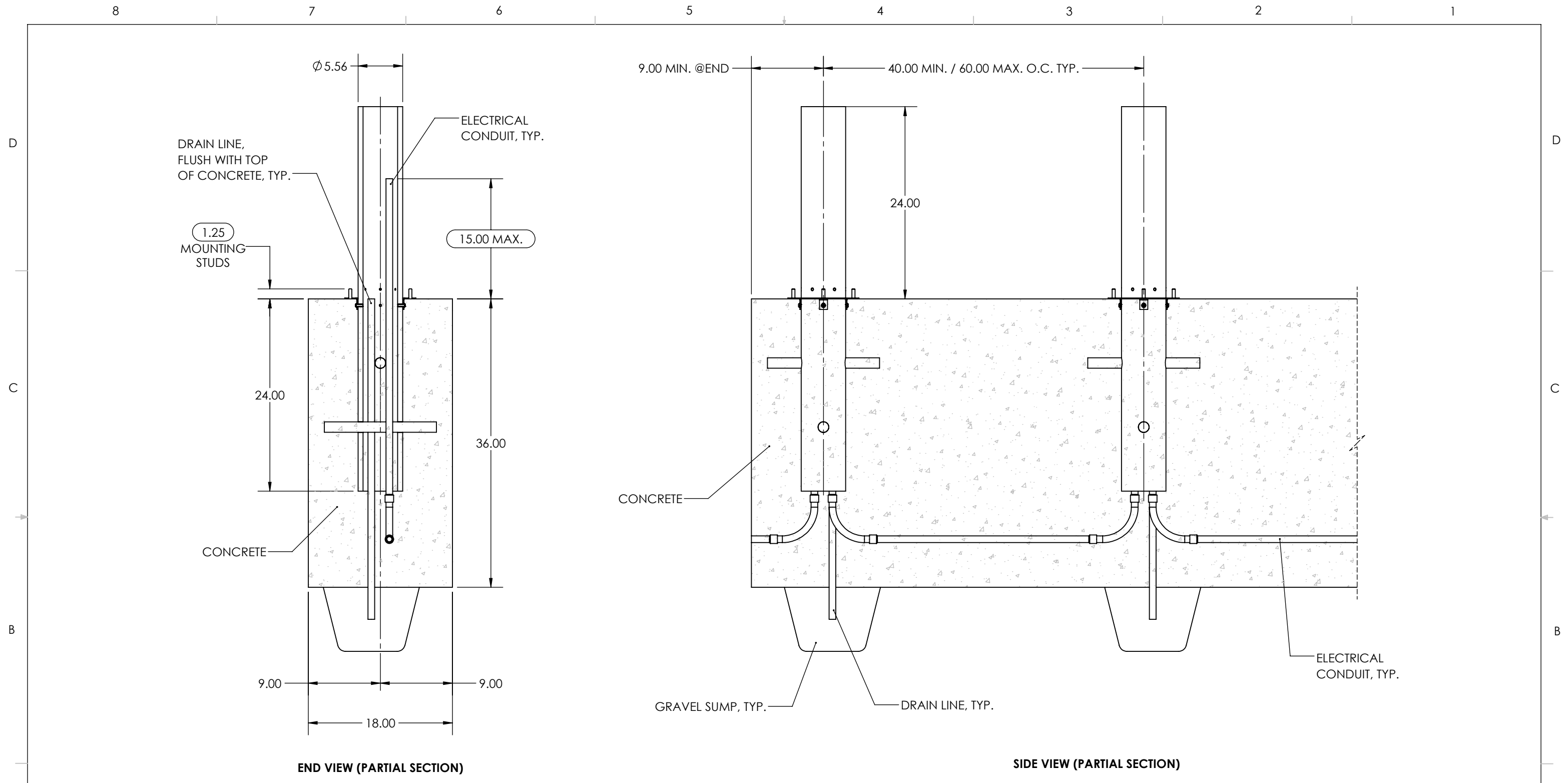
SIDE VIEW (PARTIAL SECTION)

NOTES:

1. FOOTINGS HAVE BEEN DESIGNED TO BEAR ON UNDISTURBED SOIL OR PROPERLY COMPACTED ENGINEERED FILL ASSUMING A NET BEARING CAPACITY OF 3000 PSF.
2. CONCRETE WORK SHALL BE DONE IN ACCORDANCE WITH THE "BUILDING CODE REQUIREMENTS FOR REINFORCED CONCRETE" (ACI 318) AND THE SPECIFICATIONS FOR STRUCTURAL CONCRETE (ACI 301) OF THE AMERICAN CONCRETE INSTITUTE (EDITIONS AS REQUIRED BY GOVERNING CODE).
3. CAST-IN-PLACE CONCRETE SHALL BE NORMAL WEIGHT CONCRETE WITH A MINIMUM 28-DAY COMPRESSIVE STRENGTH (F'C) OF 5000 PSI UNO.
4. PROVIDE 6% (+/-1.5%) AIR ENTRAINMENT IN CONCRETE EXPOSED TO FREEZE/THAW.

0	INITIAL RELEASE	-----	-----
REV.	DESCRIPTION	REVISED BY	DATE

<p><b>UNLESS OTHERWISE SPECIFIED:</b>          1. PRIMARY DIM. ARE IN INCHES &amp; SECONDARY [DIM] IN MM          2. TOLERANCES          FRACTIONAL: ±1/32; ANGULAR/BEND: ±1°          TWO PLACE DECIMAL ±.030          THREE PLACE DECIMAL ±.020          3. REMOVE ALL BURRS AND SHARP EDGES</p>		<p><b>FORMS+SURFACES</b> 30 Pine Street, Pittsburgh, PA 15223          Tel (412) 781-9003 Fax (412) 781-7840</p>	
<p>THIRD ANGLE PROJECTION</p>		<p>NAME: DWN          DATE: 5/23/2023</p>	<p>DESCRIPTION:  <b>FORMS+SURFACES</b>  <b>S10-P1 SECURITY CORE, LIGHT COLUMN</b>  <b>INDIVIDUAL FOUNDATION, WITH PAVER</b></p>
<p>MATERIAL: N/A</p>		<p>CHK: _____</p>	<p>DO NOT SCALE DRAWING</p>
<p>FINISH: N/A</p>		<p><b>PROPRIETARY AND CONFIDENTIAL</b>          THE INFORMATION CONTAINED IN THIS DRAWING IS THE SOLE PROPERTY OF FORMS + SURFACES. ANY REPRODUCTION IN PART OR AS A WHOLE WITHOUT WRITTEN PERMISSION IS PROHIBITED.</p>	
<p>WEIGHT: N/A</p>		<p>SIZE: B</p>	<p>DWG. NO.: S10-DP-IND-PV-LBLCB-INSTALL</p>
<p>SCALE: NOT TO SCALE</p>		<p>REV: 0</p>	<p>SHEET: 1 OF 1</p>



**NOTES:**

1. FOOTINGS HAVE BEEN DESIGNED TO BEAR ON UNDISTURBED SOIL OR PROPERLY COMPACTED ENGINEERED FILL ASSUMING A NET BEARING CAPACITY OF 3000 PSF.
2. CONCRETE WORK SHALL BE DONE IN ACCORDANCE WITH THE "BUILDING CODE REQUIREMENTS FOR REINFORCED CONCRETE" (ACI 318) AND THE SPECIFICATIONS FOR STRUCTURAL CONCRETE (ACI 301) OF THE AMERICAN CONCRETE INSTITUTE (EDITIONS AS REQUIRED BY GOVERNING CODE).
3. CAST-IN-PLACE CONCRETE SHALL BE NORMAL WEIGHT CONCRETE WITH A MINIMUM 28-DAY COMPRESSIVE STRENGTH (F'c) OF 5000 PSI UNO.
4. PROVIDE 6% (+/-1.5%) AIR ENTRAINMENT IN CONCRETE EXPOSED TO FREEZE/THAW.

**UNLESS OTHERWISE SPECIFIED:**  
 1. PRIMARY DIM. ARE IN INCHES & SECONDARY [DIM] IN MM  
 2. TOLERANCES  
 FRACTIONAL: ±1/32; ANGULAR/BEND: ±1°  
 TWO PLACE DECIMAL ±.030  
 THREE PLACE DECIMAL ±.020  
 3. REMOVE ALL BURRS AND SHARP EDGES  
 THIRD ANGLE PROJECTION  
 MATERIAL: N/A  
 FINISH: N/A  
 WEIGHT: N/A  
 SCALE: NOT TO SCALE

**FORMS+SURFACES** 30 Pine Street, Pittsburgh, PA 15223  
 Tel (412) 781-9003 Fax (412) 781-7840

NAME	DATE
DWN YAF	05/25/2023
CHK	

<b>DESCRIPTION:</b>			
<b>FORMS+SURFACES</b>			
<b>S10-P1 SECURITY CORE, LIGHT COLUMN STRIP FOUNDATION, NO PAVER</b>			
SIZE	DWG. NO.	REV	SHEET
B	S10-DP-STR-NP-LBLCB-INSTALL	0	1 OF 1

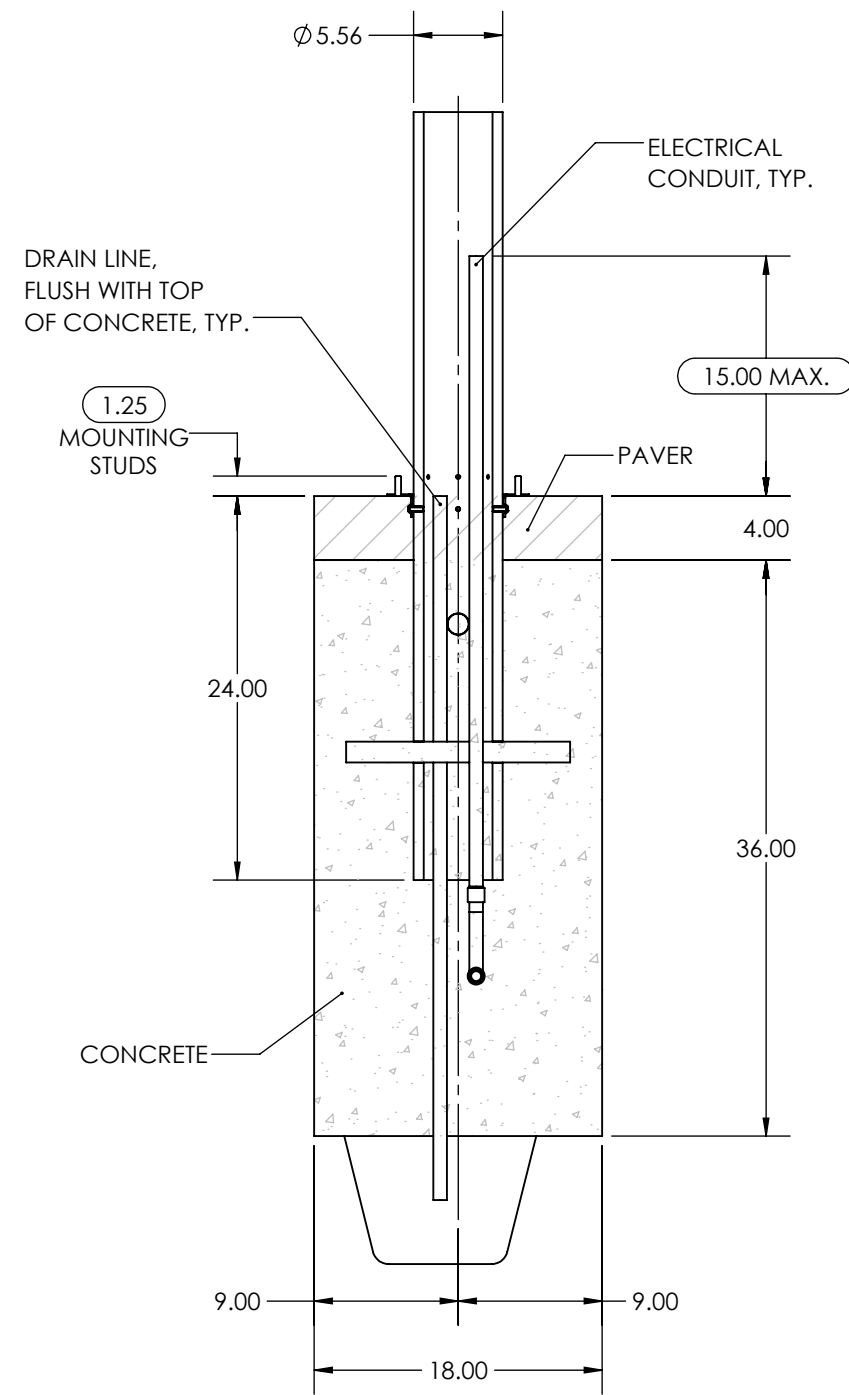
REV.	DESCRIPTION	REVISED BY	DATE
0	INITIAL RELEASE	-----	-----

8 7 6 5 4 3 2 1

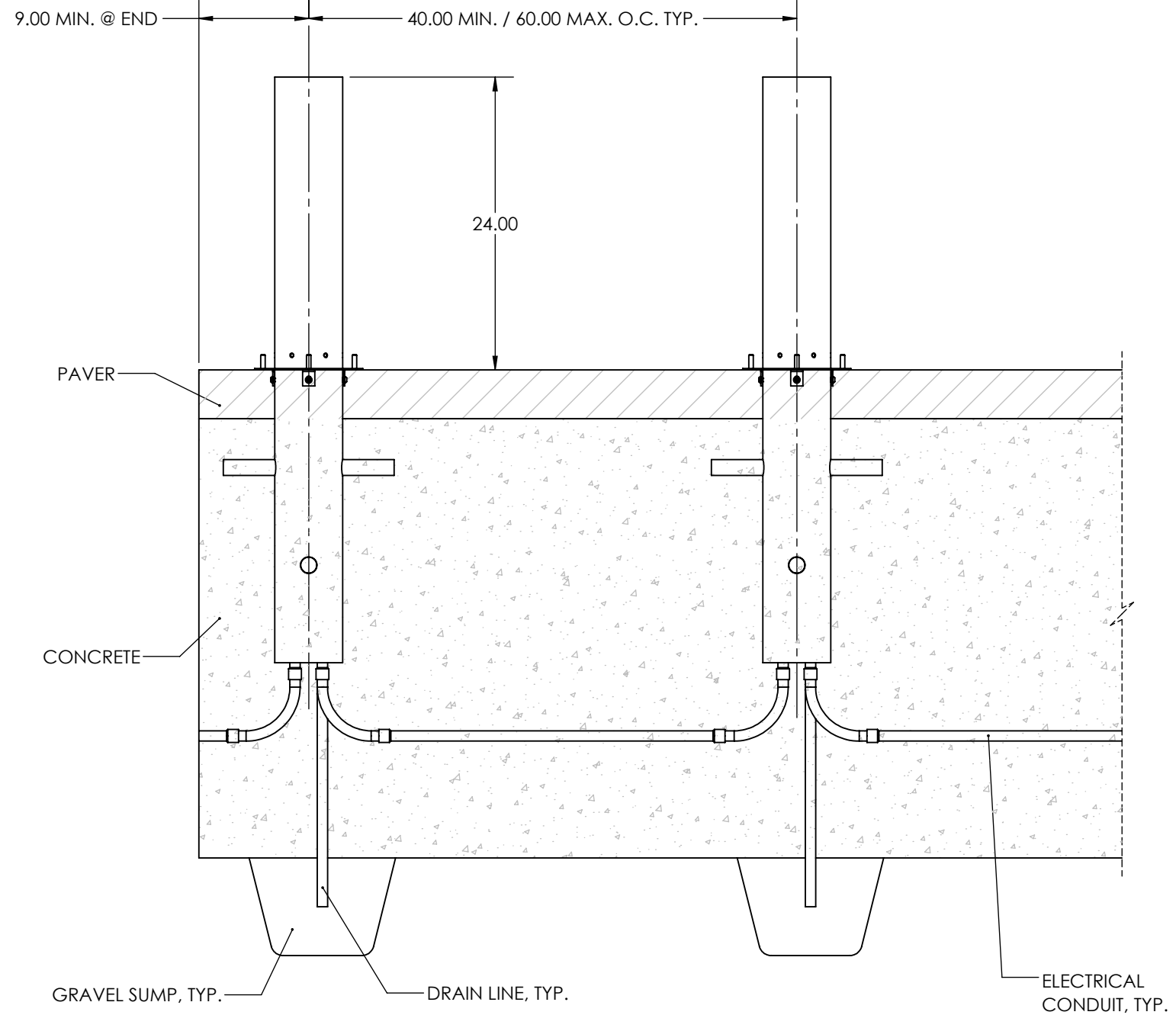
D

C

B



END VIEW (PARTIAL SECTION)



SIDE VIEW (PARTIAL SECTION)

NOTES:

- FOOTINGS HAVE BEEN DESIGNED TO BEAR ON UNDISTURBED SOIL OR PROPERLY COMPACTED ENGINEERED FILL ASSUMING A NET BEARING CAPACITY OF 3000 PSF.
- CONCRETE WORK SHALL BE DONE IN ACCORDANCE WITH THE "BUILDING CODE REQUIREMENTS FOR REINFORCED CONCRETE" (ACI 318) AND THE SPECIFICATIONS FOR STRUCTURAL CONCRETE (ACI 301) OF THE AMERICAN CONCRETE INSTITUTE (EDITIONS AS REQUIRED BY GOVERNING CODE).
- CAST-IN-PLACE CONCRETE SHALL BE NORMAL WEIGHT CONCRETE WITH A MINIMUM 28-DAY COMPRESSIVE STRENGTH (F'C) OF 5000 PSI UNO.
- PROVIDE 6% (+/-1.5%) AIR ENTRAINMENT IN CONCRETE EXPOSED TO FREEZE/THAW.

UNLESS OTHERWISE SPECIFIED:

- PRIMARY DIM. ARE IN INCHES & SECONDARY [DIM] IN MM
  - TOLERANCES  
FRACTIONAL: ±1/32; ANGULAR/BEND: ±1°  
TWO PLACE DECIMAL ±.030  
THREE PLACE DECIMAL ±.020
  - REMOVE ALL BURRS AND SHARP EDGES
- THIRD ANGLE PROJECTION
- MATERIAL: N/A
- FINISH: N/A
- WEIGHT: N/A
- SCALE: NOT TO SCALE



30 Pine Street, Pittsburgh, PA 15223  
Tel (412) 781-9003 Fax (412) 781-7840

NAME	DATE
DWN	05/25/2023
YAF	
CHK	

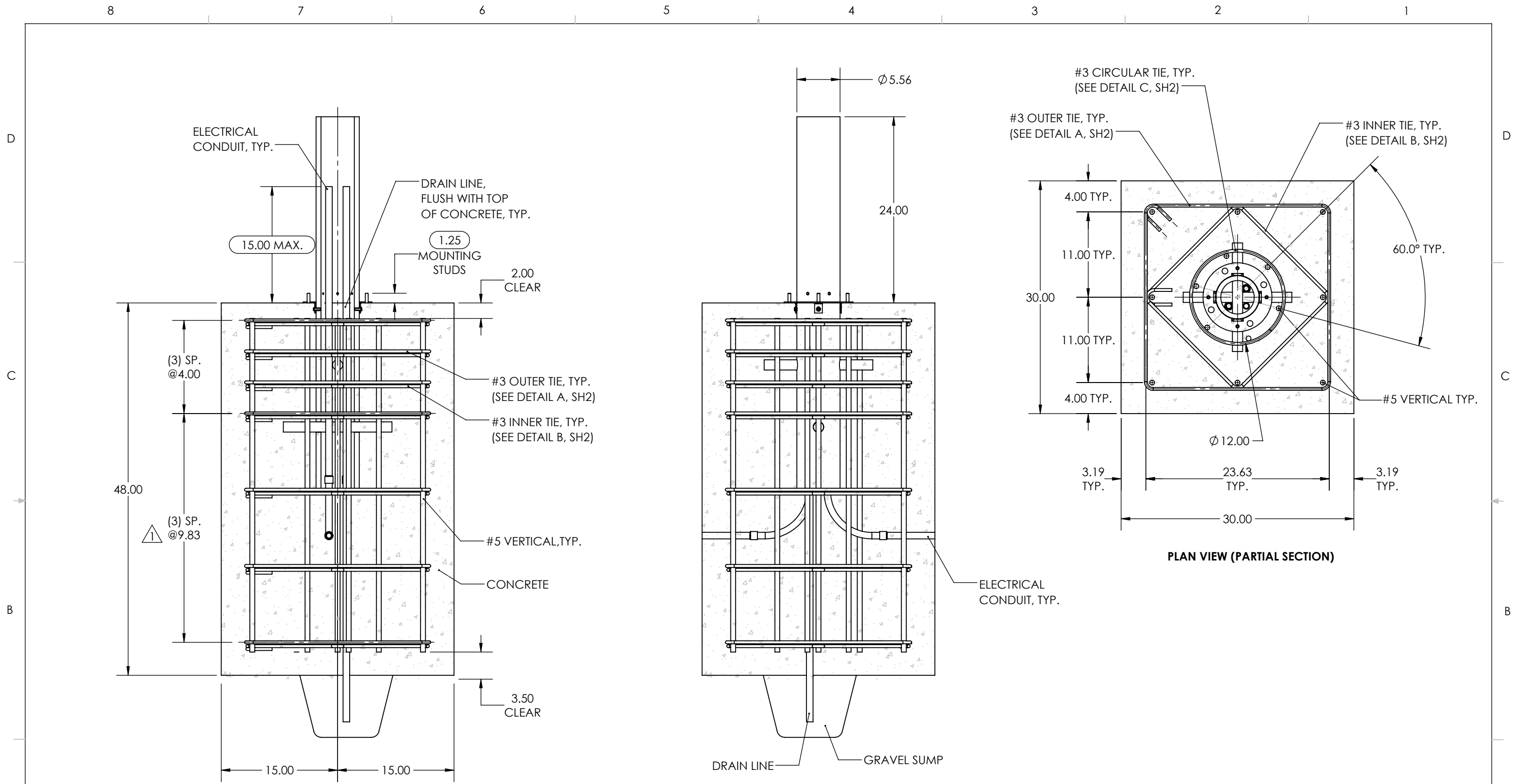
DESCRIPTION:			
<b>FORMS+SURFACES</b>			
<b>S10-P1 SECURITY CORE, LIGHT COLUMN</b>			
<b>STRIP FOUNDATION WITH PAVER</b>			
SIZE	DWG. NO.	REV	SHEET
B	S10-DP-STR-PV-LBLCB-INSTALL	0	1 OF 1

REV.	DESCRIPTION	REVISED BY	DATE
0	INITIAL RELEASE	-----	-----

A

A

8 7 6 5 4 3 2 1



FRONT VIEW (PARTIAL SECTION)

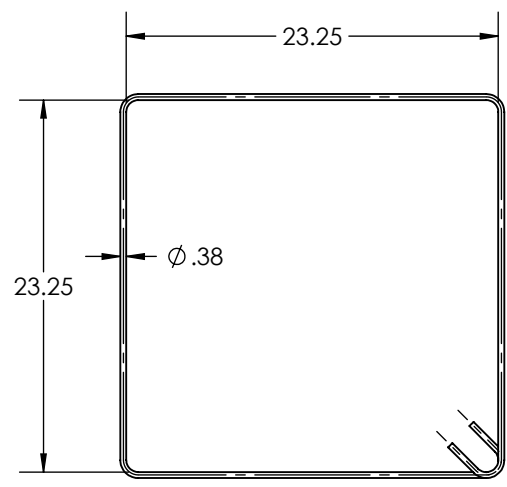
SIDE VIEW (PARTIAL SECTION)

PLAN VIEW (PARTIAL SECTION)

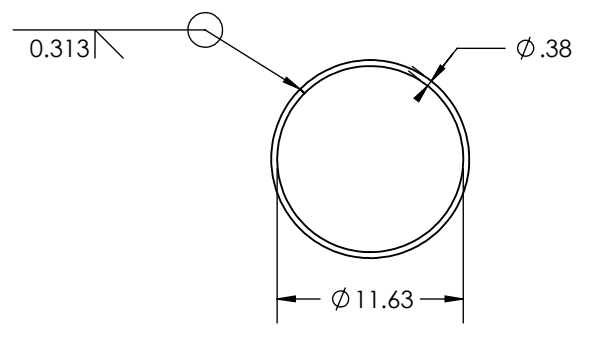
UNLESS OTHERWISE SPECIFIED: 1. PRIMARY DIM. ARE IN INCHES & SECONDARY [DIM] IN MM 2. TOLERANCES FRACTIONAL: ±1/32; ANGULAR/BEND: ±1° TWO PLACE DECIMAL ±.030 THREE PLACE DECIMAL ±.020 3. REMOVE ALL BURRS AND SHARP EDGES		<b>FORMS+SURFACES</b> 30 Pine Street, Pittsburgh, PA 15223 Tel (412) 781-9003 Fax (412) 781-7840	
THIRD ANGLE PROJECTION	NAME	DATE	DESCRIPTION:
	DWN	RTS	10/15/21
	CHK		<b>FORMS+SURFACES</b>
MATERIAL: N/A	DO NOT SCALE DRAWING		<b>SC30-P1 SECURITY CORE, LIGHT COLUMN</b>
FINISH: N/A	PROPRIETARY AND CONFIDENTIAL		<b>INDIVIDUAL FOUNDATION, NO PAVER</b>
WEIGHT: N/A	SIZE	DWG. NO.	REV
SCALE: NOT TO SCALE	B	SC30-DP-IND-NP-LBLCB-INSTALL	1
			SHEET
			1 OF 2

1	BOTTOM REBAR SPACING WAS 9.75"	YAF	05/31/2023
REV.	DESCRIPTION	REVISED BY	DATE

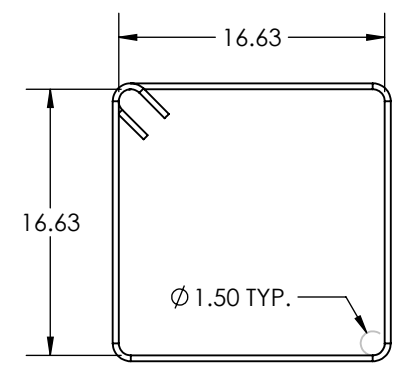
D  
C  
B  
A



**DETAIL A**  
**#3 OUTER TIE, TYP.**



**DETAIL C**  
**#3 CIRCULAR TIE, TYP.**



**DETAIL B**  
**#3 INNER TIE, TYP.**

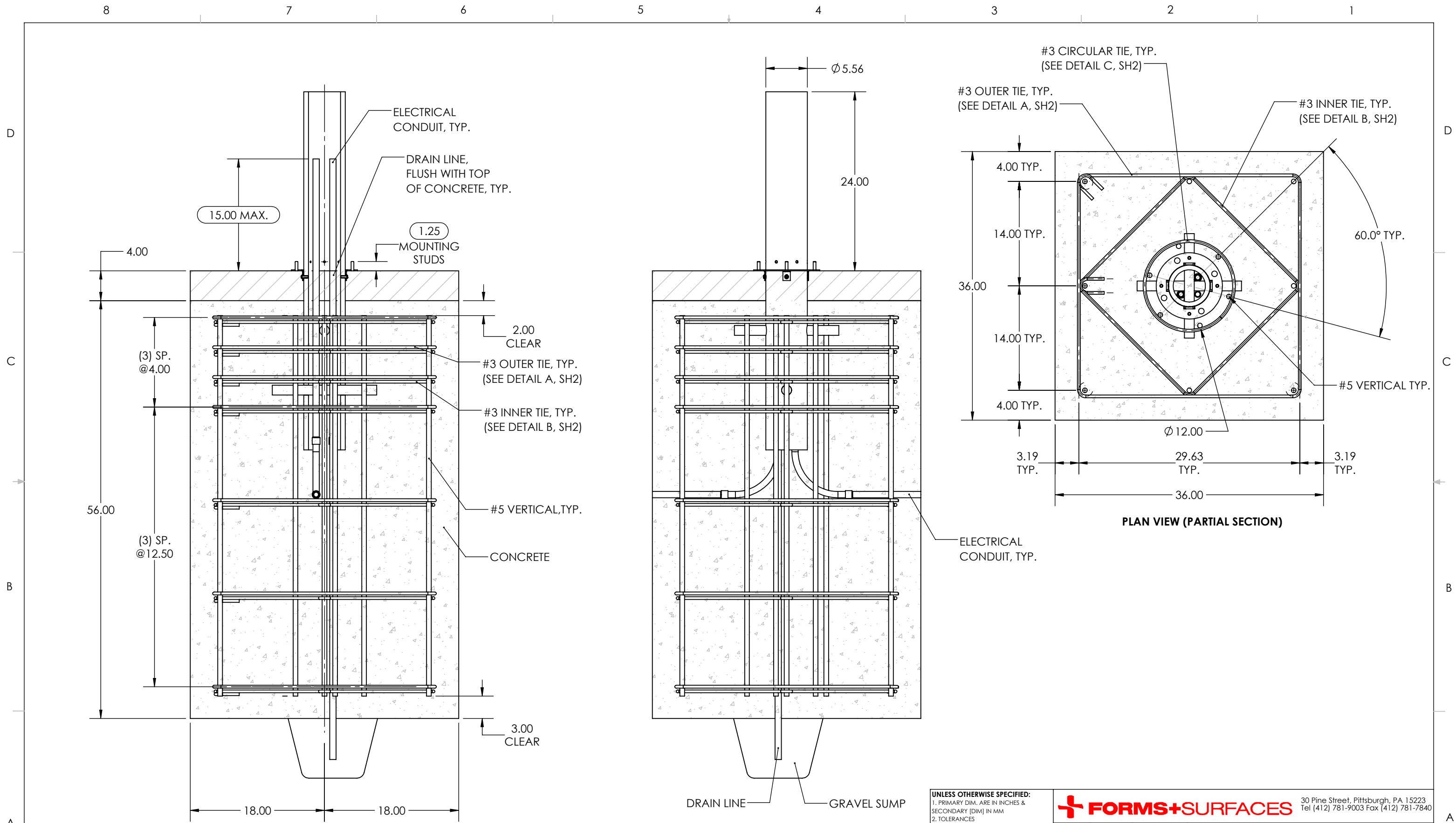
REBAR CHART	
BAR SIZE	DIAMETER
#3	Ø 0.375
#5	Ø 0.625

**NOTES:**

- FOOTINGS HAVE BEEN DESIGNED TO BEAR ON UNDISTURBED SOIL OR PROPERLY COMPACTED ENGINEERED FILL ASSUMING A NET BEARING CAPACITY OF 2000 PSF.
- REINFORCED CONCRETE WORK SHALL BE DONE IN ACCORDANCE WITH THE "BUILDING CODE REQUIREMENTS FOR REINFORCED CONCRETE" (ACI 318) AND THE SPECIFICATIONS FOR STRUCTURAL CONCRETE (ACI 301) OF THE AMERICAN CONCRETE INSTITUTE (EDITIONS AS REQUIRED BY GOVERNING CODE).
- CAST-IN-PLACE CONCRETE SHALL BE NORMAL WEIGHT CONCRETE WITH A MINIMUM 28-DAY COMPRESSIVE STRENGTH (F'C) OF 5000 PSI UNO.
- PROVIDE 6% (+/-1.5%) AIR ENTRAINMENT IN CONCRETE EXPOSED TO FREEZE/THAW.
- DEFORMED BAR REINFORCEMENT SHALL BE ASTM A615, GRADE 60; SEE CHART FOR SIZING.
- REINFORCEMENT SHALL BE SECURELY HELD IN PLACE WHILE PLACING CONCRETE. IF REQUIRED, ADDITIONAL BARS, STIRRUPS, OR CHAIRS SHALL BE PROVIDED TO FURNISH SUPPORT FOR SPECIFIED BARS.

<p><b>UNLESS OTHERWISE SPECIFIED:</b>                  1. PRIMARY DIM. ARE IN INCHES &amp; SECONDARY [DIM] IN MM                  2. TOLERANCES                  FRACTIONAL: ±1/32; ANGULAR/BEND: ±1°                  TWO PLACE DECIMAL ±.030                  THREE PLACE DECIMAL ±.020                  3. REMOVE ALL BURRS AND SHARP EDGES</p>		<p><b>FORMS+SURFACES</b> 30 Pine Street, Pittsburgh, PA 15223                  Tel (412) 781-9003 Fax (412) 781-7840</p>	
<p>THIRD ANGLE PROJECTION</p>		<p>NAME</p> <p>DWN RTS</p>	<p>DATE</p> <p>10/15/21</p>
<p>MATERIAL: N/A</p>		<p>DESCRIPTION:  <b>FORMS+SURFACES</b>  <b>SC30-P1 SECURITY CORE, LIGHT COLUMN</b>  <b>INDIVIDUAL FOUNDATION, NO PAVER</b></p>	
<p>FINISH: N/A</p>		<p>DO NOT SCALE DRAWING</p>	
<p>WEIGHT: N/A</p>		<p>PROPRIETARY AND CONFIDENTIAL                  THE INFORMATION CONTAINED IN THIS DRAWING IS THE SOLE PROPERTY OF FORMS + SURFACES. ANY REPRODUCTION IN PART OR AS A WHOLE WITHOUT WRITTEN PERMISSION IS PROHIBITED.</p>	
<p>SCALE: NOT TO SCALE</p>		<p>SIZE</p> <p>B</p>	<p>DWG. NO.</p> <p>SC30-DP-IND-NP-LBLCB-INSTALL</p>
		<p>REV</p> <p>?</p>	<p>SHEET</p> <p>2 OF 2</p>





**END VIEW (PARTIAL SECTION)**

**SIDE VIEW (PARTIAL SECTION)**

**PLAN VIEW (PARTIAL SECTION)**

0	INITIAL RELEASE	-----	-----
REV.	DESCRIPTION	REVISED BY	DATE

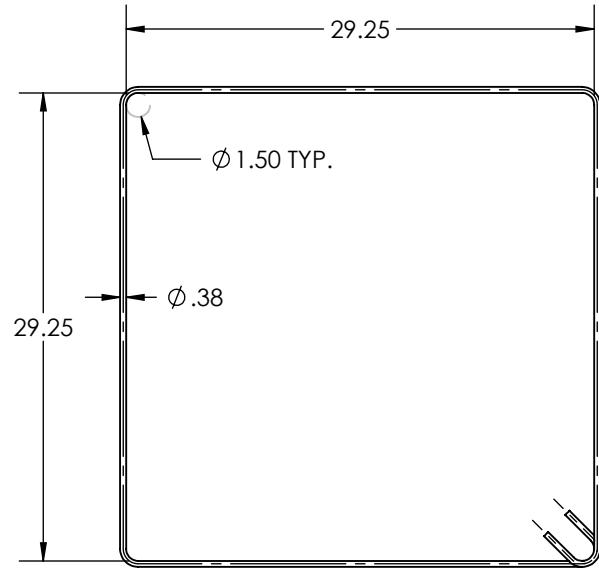
**UNLESS OTHERWISE SPECIFIED:**  
 1. PRIMARY DIM. ARE IN INCHES & SECONDARY [DIM] IN MM  
 2. TOLERANCES  
 FRACTIONAL: ±1/32; ANGULAR/BEND: ±1°  
 TWO PLACE DECIMAL ±.030  
 THREE PLACE DECIMAL ±.020  
 3. REMOVE ALL BURRS AND SHARP EDGES

**FORMS+SURFACES** 30 Pine Street, Pittsburgh, PA 15223  
 Tel (412) 781-9003 Fax (412) 781-7840

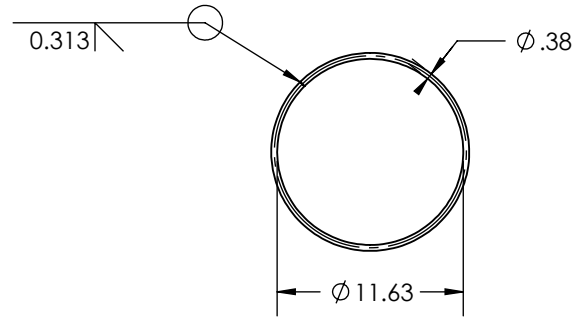
NAME	DATE	DESCRIPTION: <b>FORMS+SURFACES</b> <b>SC30-P1 SECURITY CORE, LIGHT COLUMN</b> <b>INDIVIDUAL FOUNDATION, WITH PAVER</b>
DWN	YAF 06/28/2023	
CHK		

MATERIAL: N/A DO NOT SCALE DRAWING  
 FINISH: N/A PROPRIETARY AND CONFIDENTIAL  
 WEIGHT: N/A THE INFORMATION CONTAINED IN THIS DRAWING IS THE SOLE PROPERTY OF FORMS + SURFACES. ANY REPRODUCTION IN PART OR AS A WHOLE WITHOUT WRITTEN PERMISSION IS PROHIBITED.  
 SCALE: NOT TO SCALE

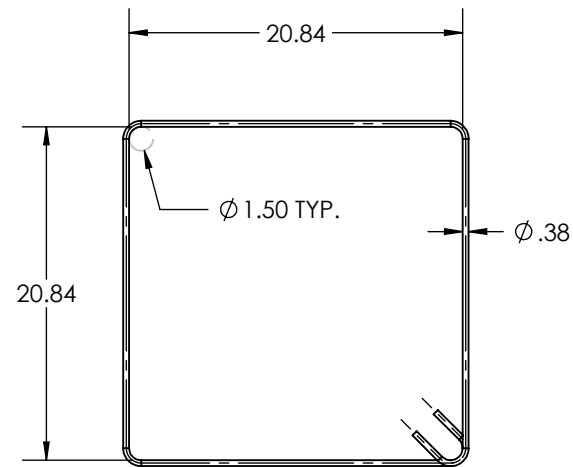
SIZE	DWG. NO.	REV	SHEET
B	SC30-DP-IND-PV-LBLCB-INSTALL	0	1 OF 2



**DETAIL A**  
**#3 OUTER TIE, TYP.**



**DETAIL C**  
**#3 CIRCULAR TIE, TYP.**


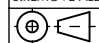


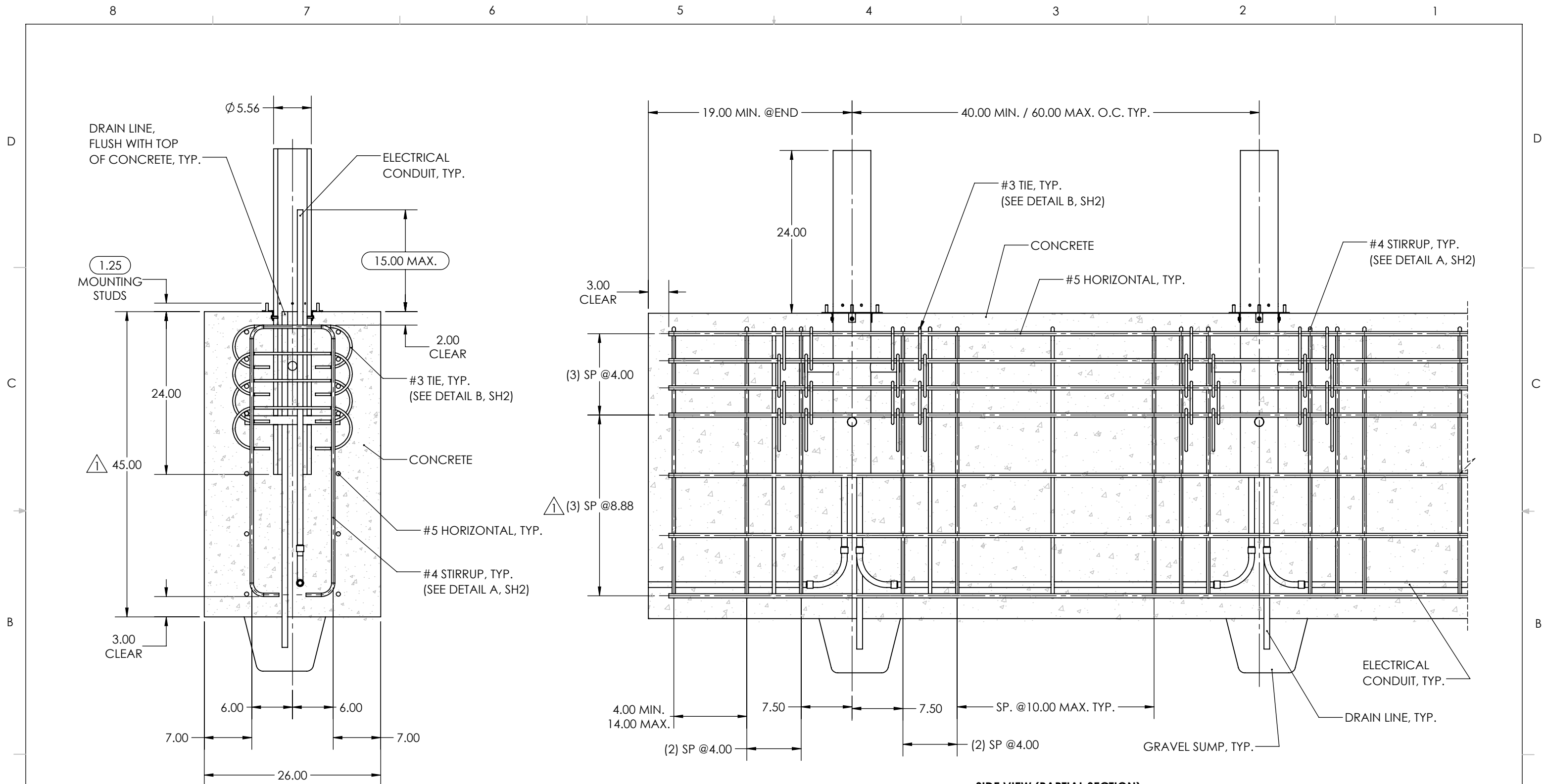
**DETAIL B**  
**#3 INNER TIE, TYP.**

REBAR CHART	
BAR SIZE	DIAMETER
#3	Ø 0.375
#5	Ø 0.625

**NOTES:**

- FOOTINGS HAVE BEEN DESIGNED TO BEAR ON UNDISTURBED SOIL OR PROPERLY COMPACTED ENGINEERED FILL ASSUMING A NET BEARING CAPACITY OF 2000 PSF.
- REINFORCED CONCRETE WORK SHALL BE DONE IN ACCORDANCE WITH THE "BUILDING CODE REQUIREMENTS FOR REINFORCED CONCRETE" (ACI 318) AND THE SPECIFICATIONS FOR STRUCTURAL CONCRETE (ACI 301) OF THE AMERICAN CONCRETE INSTITUTE (EDITIONS AS REQUIRED BY GOVERNING CODE).
- CAST-IN-PLACE CONCRETE SHALL BE NORMAL WEIGHT CONCRETE WITH A MINIMUM 28-DAY COMPRESSIVE STRENGTH (F'C) OF 5000 PSI UNO.
- PROVIDE 6% (+/-1.5%) AIR ENTRAINMENT IN CONCRETE EXPOSED TO FREEZE/THAW.
- DEFORMED BAR REINFORCEMENT SHALL BE ASTM A615, GRADE 60; SEE CHART FOR SIZING.
- REINFORCEMENT SHALL BE SECURELY HELD IN PLACE WHILE PLACING CONCRETE. IF REQUIRED, ADDITIONAL BARS, STIRRUPS, OR CHAIRS SHALL BE PROVIDED TO FURNISH SUPPORT FOR SPECIFIED BARS.

<b>UNLESS OTHERWISE SPECIFIED:</b> 1. PRIMARY DIM. ARE IN INCHES & SECONDARY [DIM] IN MM 2. TOLERANCES FRACTIONAL: ±1/32; ANGULAR/BEND: ±1° TWO PLACE DECIMAL ±.030 THREE PLACE DECIMAL ±.020 3. REMOVE ALL BURRS AND SHARP EDGES		 30 Pine Street, Pittsburgh, PA 15223 Tel (412) 781-9003 Fax (412) 781-7840			
THIRD ANGLE PROJECTION 					
MATERIAL: N/A	FINISH: N/A	NAME: DWN	DATE: 06/28/2023	DESCRIPTION: <b>FORMS+SURFACES</b> <b>SC30-P1 SECURITY CORE, LIGHT COLUMN</b> <b>INDIVIDUAL FOUNDATION, WITH PAVER</b>	
WEIGHT: N/A	SCALE: NOT TO SCALE	CHK: CHK	DO NOT SCALE DRAWING		
PROPRIETARY AND CONFIDENTIAL THE INFORMATION CONTAINED IN THIS DRAWING IS THE SOLE PROPERTY OF FORMS + SURFACES. ANY REPRODUCTION IN PART OR AS A WHOLE WITHOUT WRITTEN PERMISSION IS PROHIBITED.		SIZE: B	DWG. NO.: SC30-DP-IND-PV-LBLCB-INSTALL		REV: 0



1	CONCRETE HEIGHT WAS 48.00", REBAR SPACING WAS 9.88"	YAF	6/29/2023
REV.	DESCRIPTION	REVISED BY	DATE

**UNLESS OTHERWISE SPECIFIED:**  
 1. PRIMARY DIM. ARE IN INCHES & SECONDARY [DIM] IN MM  
 2. TOLERANCES  
 FRACTIONAL: ±1/32; ANGULAR/BEND: ±1°  
 TWO PLACE DECIMAL ±.030  
 THREE PLACE DECIMAL ±.020  
 3. REMOVE ALL BURRS AND SHARP EDGES

THIRD ANGLE PROJECTION

MATERIAL: N/A  
 FINISH: N/A  
 WEIGHT: N/A  
 SCALE: NOT TO SCALE

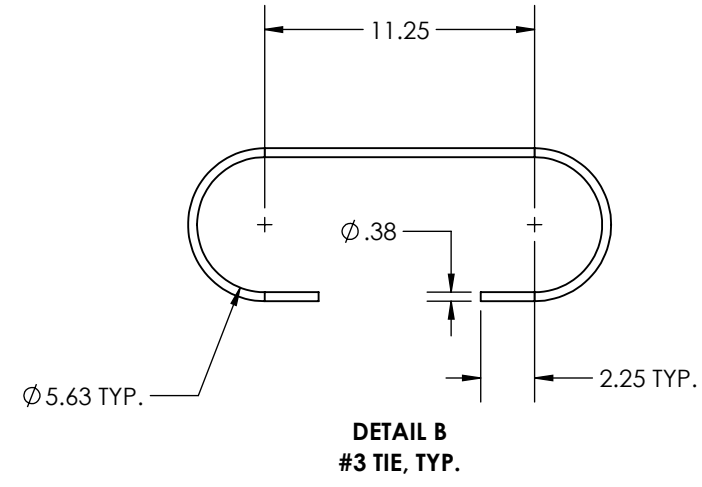
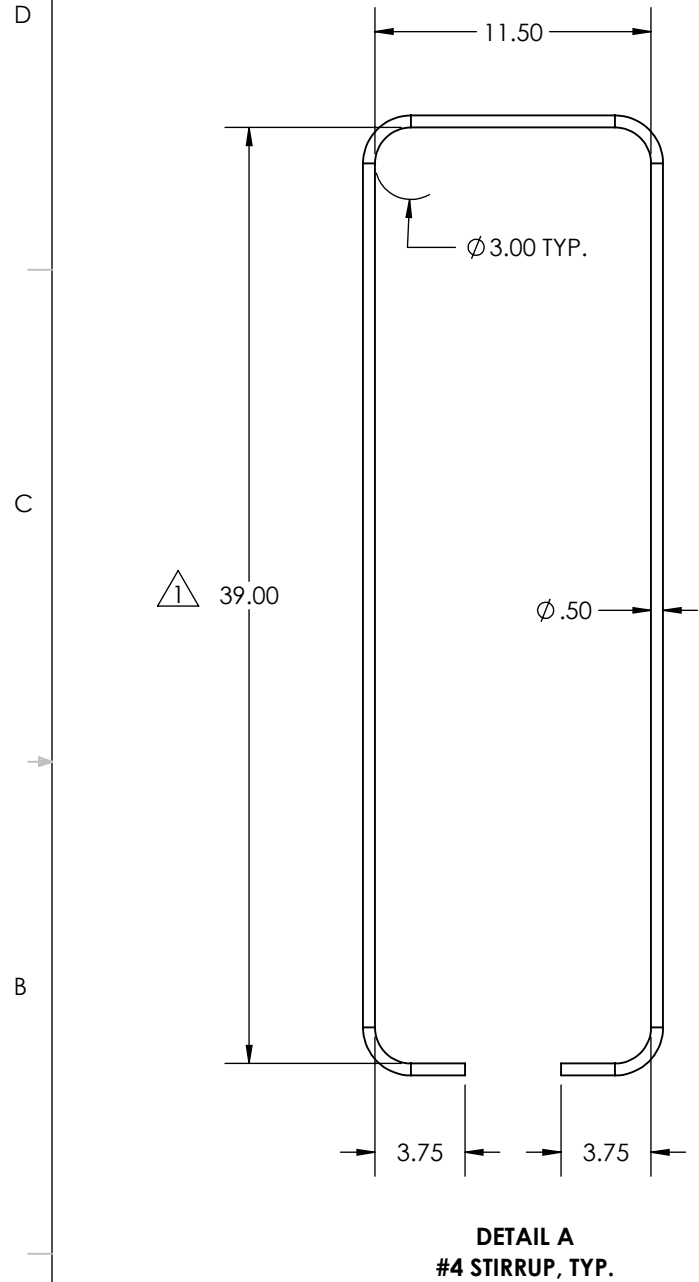
**FORMS+SURFACES** 30 Pine Street, Pittsburgh, PA 15223  
 Tel (412) 781-9003 Fax (412) 781-7840

NAME	DATE	DESCRIPTION:	
DWN	RTS	10/15/21	
CHK		<b>FORMS+SURFACES</b>	
		<b>SC30-P1 SECURITY CORE, LIGHT COLUMN STRIP FOUNDATION, NO PAVER</b>	
SIZE	DWG. NO.	REV	SHEET
B	SC30-DP-STR-NP-LBLCB-INSTALL	1	1 OF 2

DO NOT SCALE DRAWING

**PROPRIETARY AND CONFIDENTIAL**  
 THE INFORMATION CONTAINED IN THIS DRAWING IS THE SOLE PROPERTY OF FORMS + SURFACES. ANY REPRODUCTION IN PART OR AS A WHOLE WITHOUT WRITTEN PERMISSION IS PROHIBITED.

8 7 6 5 4 3 2 1



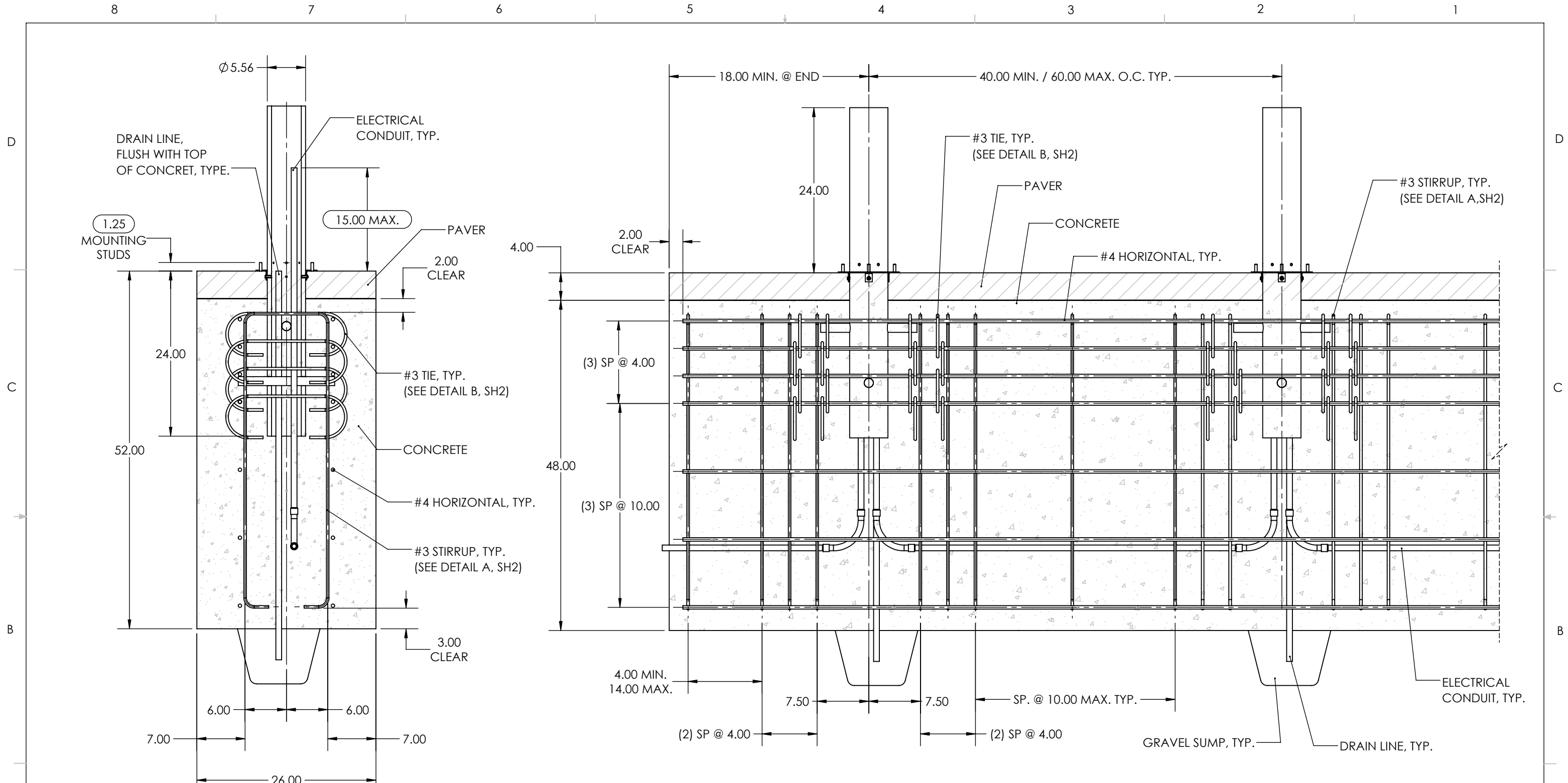
REBAR CHART	
BAR SIZE	DIAMETER
#3	Ø 0.375
#4	Ø 0.500
#5	Ø 0.625

**NOTES:**

1. FOOTINGS HAVE BEEN DESIGNED TO BEAR ON UNDISTURBED SOIL OR PROPERLY COMPACTED ENGINEERED FILL ASSUMING A NET BEARING CAPACITY OF 2000 PSF.
2. REINFORCED CONCRETE WORK SHALL BE DONE IN ACCORDANCE WITH THE "BUILDING CODE REQUIREMENTS FOR REINFORCED CONCRETE" (ACI 318) AND THE SPECIFICATIONS FOR STRUCTURAL CONCRETE (ACI 301) OF THE AMERICAN CONCRETE INSTITUTE (EDITIONS AS REQUIRED BY GOVERNING CODE).
3. CAST-IN-PLACE CONCRETE SHALL BE NORMAL WEIGHT CONCRETE WITH A MINIMUM 28-DAY COMPRESSIVE STRENGTH (FC) OF 5000 PSI UNO.
4. PROVIDE 6% (+/-1.5%) AIR ENTRAINMENT IN CONCRETE EXPOSED TO FREEZE/THAW.
5. DEFORMED BAR REINFORCEMENT SHALL BE ASTM A615, GRADE 60; SEE CHART FOR SIZING.
6. REINFORCEMENT SHALL BE SECURELY HELD IN PLACE WHILE PLACING CONCRETE. IF REQUIRED, ADDITIONAL BARS, STIRRUPS, OR CHAIRS SHALL BE PROVIDED TO FURNISH SUPPORT FOR SPECIFIED BARS.

<p><b>UNLESS OTHERWISE SPECIFIED:</b>          1. PRIMARY DIM. ARE IN INCHES &amp; SECONDARY [DIM] IN MM          2. TOLERANCES          FRACTIONAL: ±1/32; ANGULAR/BEND: ±1°          TWO PLACE DECIMAL ±.030          THREE PLACE DECIMAL ±.020          3. REMOVE ALL BURRS AND SHARP EDGES</p>		<p><b>FORMS+SURFACES</b> 30 Pine Street, Pittsburgh, PA 15223          Tel (412) 781-9003 Fax (412) 781-7840</p>	
<p>THIRD ANGLE PROJECTION</p>		<p>NAME</p> <p>DWN RTS</p>	<p>DATE</p> <p>10/15/21</p>
<p>MATERIAL: N/A</p>		<p>DESCRIPTION:</p> <p><b>FORMS+SURFACES</b></p> <p><b>SC30-P1 SECURITY CORE, LIGHT COLUMN</b></p> <p><b>STRIP FOUNDATION, NO PAVER</b></p>	
<p>FINISH: N/A</p>		<p>DO NOT SCALE DRAWING</p>	
<p>WEIGHT: N/A</p>		<p>PROPRIETARY AND CONFIDENTIAL</p> <p>THE INFORMATION CONTAINED IN THIS DRAWING IS THE SOLE PROPERTY OF FORMS + SURFACES. ANY REPRODUCTION IN PART OR AS A WHOLE WITHOUT WRITTEN PERMISSION IS PROHIBITED.</p>	
<p>SCALE: NOT TO SCALE</p>		<p>SIZE</p> <p>B</p>	<p>DWG. NO.</p> <p>SC30-DP-STR-NP-LBLCB-INSTALL</p>
		<p>REV</p> <p>1</p>	<p>SHEET</p> <p>2 OF 2</p>

8 7 6 5 4 3 2 1



**SIDE VIEW (PARTIAL SECTION)**

**END VIEW (PARTIAL SECTION)**

**UNLESS OTHERWISE SPECIFIED:**  
 1. PRIMARY DIM. ARE IN INCHES & SECONDARY [DIM] IN MM  
 2. TOLERANCES  
 FRACTIONAL: ±1/32; ANGULAR/BEND: ±1°  
 TWO PLACE DECIMAL ±.030  
 THREE PLACE DECIMAL ±.020  
 3. REMOVE ALL BURRS AND SHARP EDGES

**THIRD ANGLE PROJECTION**

MATERIAL: N/A  
 FINISH: N/A  
 WEIGHT: N/A  
 SCALE: NOT TO SCALE

**FORMS+SURFACES**  
 30 Pine Street, Pittsburgh, PA 15223  
 Tel (412) 781-9003 Fax (412) 385-4715

NAME	DATE	DESCRIPTION:
DWN YAF	06/29/2023	<b>FORMS+SURFACES</b> <b>SC30-P1 SECURITY CORE, LIGHT COLUMN STRIP FOUNDATION, WITH PAVER</b>
CHK		

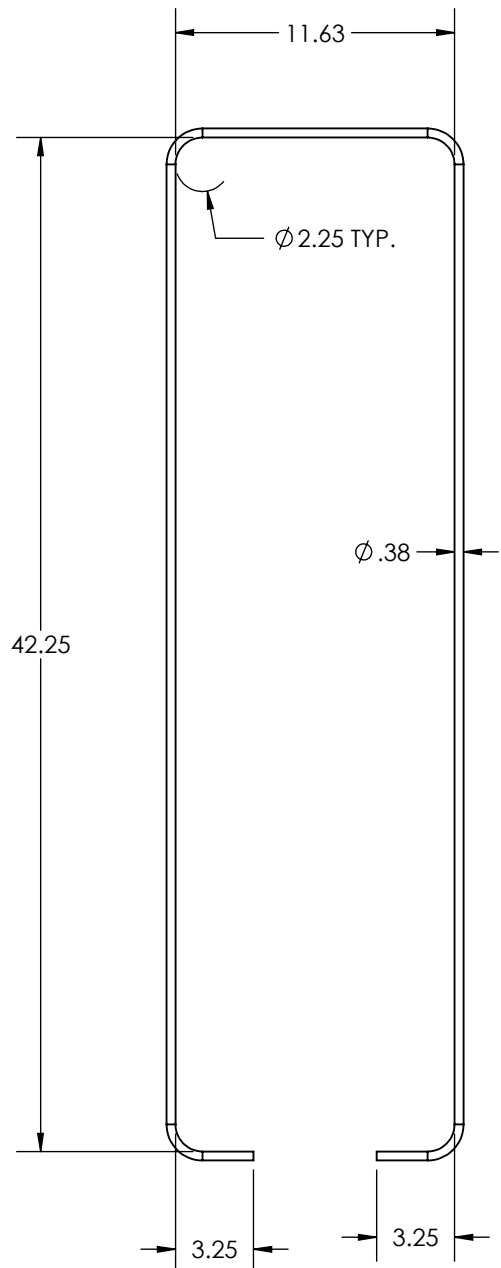
DO NOT SCALE DRAWING

**PROPRIETARY AND CONFIDENTIAL**  
 THE INFORMATION CONTAINED IN THIS DRAWING IS THE SOLE PROPERTY OF FORMS + SURFACES. ANY REPRODUCTION IN PART OR AS A WHOLE WITHOUT WRITTEN PERMISSION IS PROHIBITED.

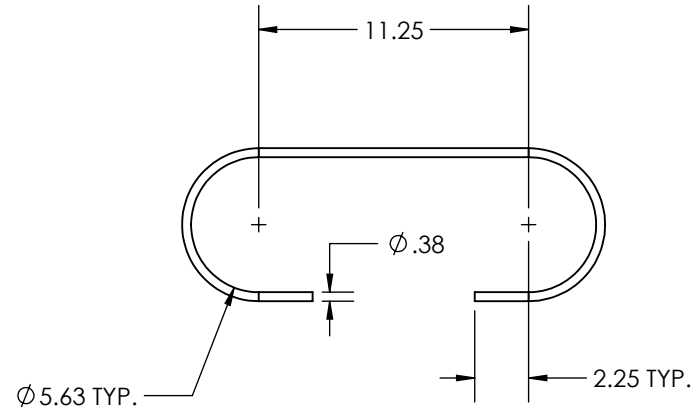
SIZE	DWG. NO.	REV	SHEET
B	SC30-DP-STR-PV-LBLCB-INSTALL	0	1 OF 2

0	INITIAL RELEASE	-----	-----
REV.	DESCRIPTION	REVISED BY	DATE

D  
C  
B  
A



**DETAIL A  
#3 STIRRUP, TYP.**



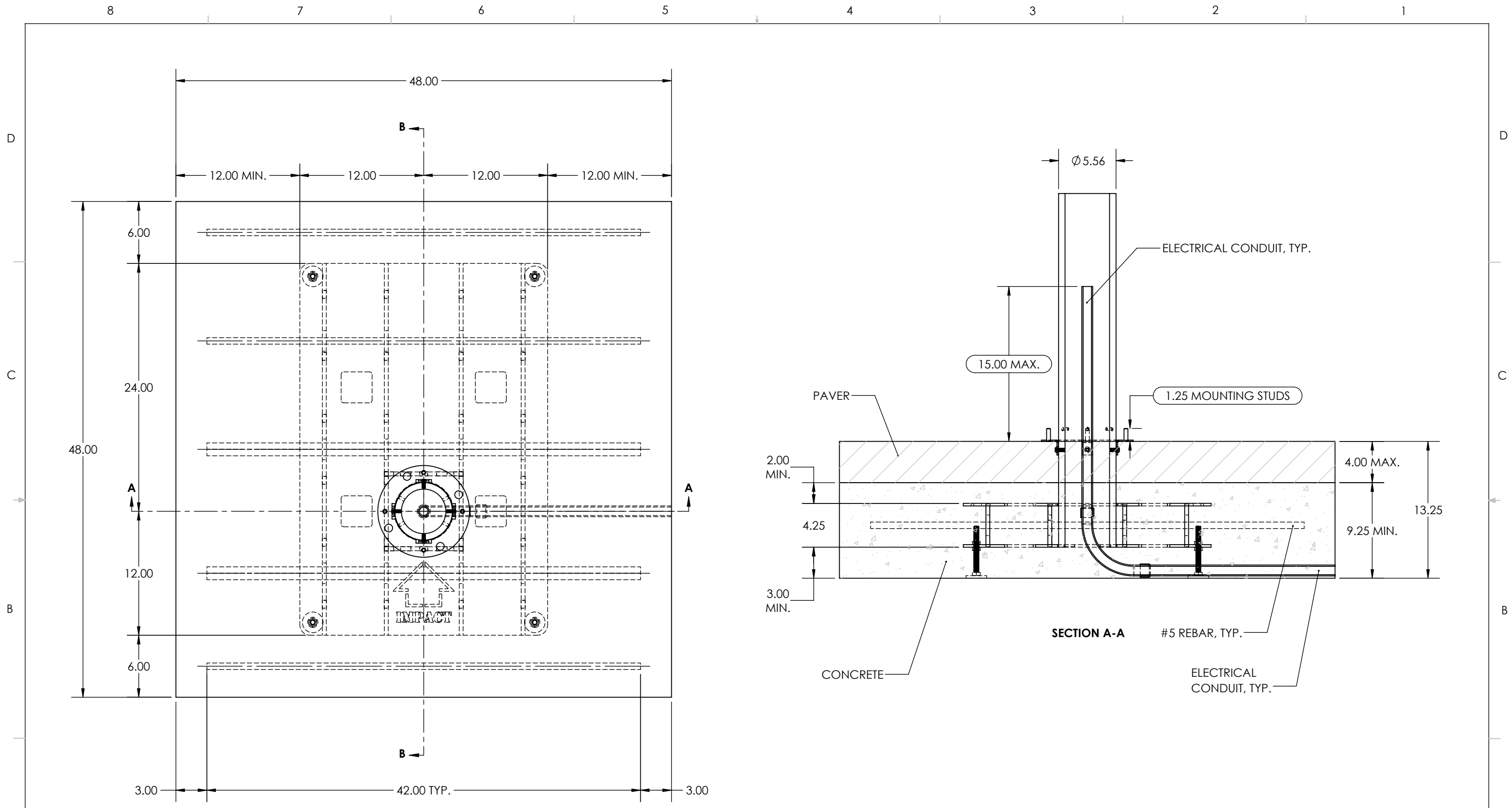
**DETAIL B  
#3 TIE, TYP.**

REBAR CHART	
BAR SIZE	DIAMETER
#3	Ø 0.375
#4	Ø 0.500

**NOTES:**

1. FOOTINGS HAVE BEEN DESIGNED TO BEAR ON UNDISTURBED SOIL OR PROPERLY COMPACTED ENGINEERED FILL ASSUMING A NET BEARING CAPACITY OF 2000 PSF.
2. REINFORCED CONCRETE WORK SHALL BE DONE IN ACCORDANCE WITH THE "BUILDING CODE REQUIREMENTS FOR REINFORCED CONCRETE" (ACI 318) AND THE SPECIFICATIONS FOR STRUCTURAL CONCRETE (ACI 301) OF THE AMERICAN CONCRETE INSTITUTE (EDITIONS AS REQUIRED BY GOVERNING CODE).
3. CAST-IN-PLACE CONCRETE SHALL BE NORMAL WEIGHT CONCRETE WITH A MINIMUM 28-DAY COMPRESSIVE STRENGTH (FC) OF 5000 PSI UNO.
4. PROVIDE 6% (+/-1.5%) AIR ENTRAINMENT IN CONCRETE EXPOSED TO FREEZE/THAW.
5. DEFORMED BAR REINFORCEMENT SHALL BE ASTM A615, GRADE 60; SEE CHART FOR SIZING.
6. REINFORCEMENT SHALL BE SECURELY HELD IN PLACE WHILE PLACING CONCRETE. IF REQUIRED, ADDITIONAL BARS, STIRRUPS, OR CHAIRS SHALL BE PROVIDED TO FURNISH SUPPORT FOR SPECIFIED BARS.

<b>UNLESS OTHERWISE SPECIFIED:</b> 1. PRIMARY DIM. ARE IN INCHES & SECONDARY [DIM] IN MM 2. TOLERANCES FRACTIONAL: ±1/32; ANGULAR/BEND: ±1° TWO PLACE DECIMAL ±.030 THREE PLACE DECIMAL ±.020 3. REMOVE ALL BURRS AND SHARP EDGES		30 Pine Street, Pittsburgh, PA 15223 Tel (412) 781-9003 Fax (412) 781-7840	
MATERIAL: N/A FINISH: N/A WEIGHT: N/A SCALE: NOT TO SCALE		NAME: DWN DATE: 06/29/2023 CHECKED: CHK	DESCRIPTION: <b>FORMS+SURFACES</b> <b>SC30-P1 SECURITY CORE, LIGHT COLUMN STRIP FOUNDATION, WITH PAVER</b>
PROPRIETARY AND CONFIDENTIAL THE INFORMATION CONTAINED IN THIS DRAWING IS THE SOLE PROPERTY OF FORMS + SURFACES. ANY REPRODUCTION IN PART OR AS A WHOLE WITHOUT WRITTEN PERMISSION IS PROHIBITED.		SIZE: B DWG. NO.: SC30-DP-STR-PV-LBLCB-INSTALL	REV: 0 SHEET: 2 OF 2



TOP VIEW

SECTION A-A

REV.	DESCRIPTION	REVISED BY	DATE
0	INITIAL RELEASE	-----	-----

**UNLESS OTHERWISE SPECIFIED:**  
 1. PRIMARY DIM. ARE IN INCHES & SECONDARY [DIM] IN MM  
 2. TOLERANCES  
 FRACTIONAL: ±1/32; ANGULAR/BEND: ±1°  
 TWO PLACE DECIMAL ±.030  
 THREE PLACE DECIMAL ±.020  
 3. REMOVE ALL BURRS AND SHARP EDGES

THIRD ANGLE PROJECTION

MATERIAL: N/A

FINISH: N/A

WEIGHT: N/A

SCALE: NOT TO SCALE

**FORMS+SURFACES** 30 Pine Street, Pittsburgh, PA 15223  
 Tel (412) 781-9003 Fax (412) 781-7840

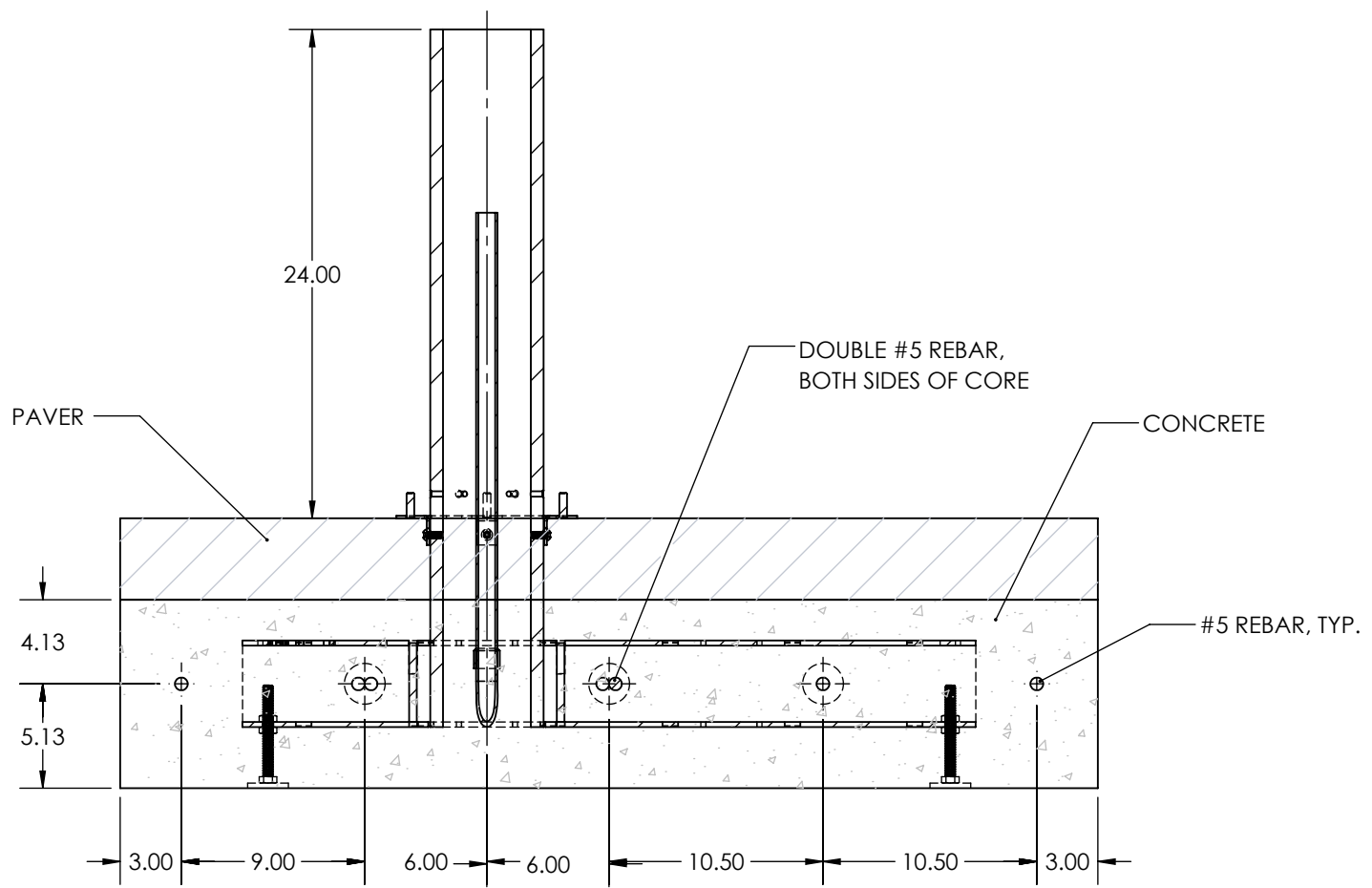
NAME	DATE	DESCRIPTION:
DWN	YAF	07/06/2023
CHK		

DO NOT SCALE DRAWING

**PROPRIETARY AND CONFIDENTIAL**  
 THE INFORMATION CONTAINED IN THIS DRAWING IS THE SOLE PROPERTY OF FORMS + SURFACES. ANY REPRODUCTION IN PART OR AS A WHOLE WITHOUT WRITTEN PERMISSION IS PROHIBITED.

SIZE	DWG. NO.	REV	SHEET
B	SC30-SH-IND-PV-LBLCB-INSTALL	1	1 OF 3

**FORMS+SURFACES**  
**SC30-P1 SHALLOW SECURITY CORE, LIGHT INDIVIDUAL FOUNDATION, WITH PAVER**



SECTION B-B

NOTES:

1. FOOTINGS HAVE BEEN DESIGNED TO BEAR ON UNDISTURBED SOIL OR PROPERLY COMPACTED ENGINEERED FILL ASSUMING A NET BEARING CAPACITY OF 2000 PSF.
2. REINFORCED CONCRETE WORK SHALL BE DONE IN ACCORDANCE WITH THE "BUILDING CODE REQUIREMENTS FOR REINFORCED CONCRETE" (ACI 318) AND THE SPECIFICATIONS FOR STRUCTURAL CONCRETE (ACI 301) OF THE AMERICAN CONCRETE INSTITUTE (EDITIONS AS REQUIRED BY GOVERNING CODE).
3. CAST-IN-PLACE CONCRETE SHALL BE NORMAL WEIGHT CONCRETE WITH A MINIMUM 28-DAY COMPRESSIVE STRENGTH (F'c) OF 5000 PSI UNO.
4. PROVIDE 6% (+/-1.5%) AIR ENTRAINMENT IN CONCRETE EXPOSED TO FREEZE/THAW.
5. DEFORMED BAR REINFORCEMENT SHALL BE ASTM A615, GRADE 60; SEE CHART FOR SIZING.
6. REINFORCEMENT SHALL BE SECURELY HELD IN PLACE WHILE PLACING CONCRETE. IF REQUIRED, ADDITIONAL BARS, STIRRUPS, OR CHAIRS SHALL BE PROVIDED TO FURNISH SUPPORT FOR SPECIFIED BARS.

REBAR CHART	
BAR SIZE	DIAMETER
#5	Ø 0.625

**UNLESS OTHERWISE SPECIFIED:**  
 1. PRIMARY DIM. ARE IN INCHES & SECONDARY [DIM] IN MM  
 2. TOLERANCES  
 FRACTIONAL: ±1/32; ANGULAR/BEND: ±1°  
 TWO PLACE DECIMAL ±.030  
 THREE PLACE DECIMAL ±.020  
 3. REMOVE ALL BURRS AND SHARP EDGES  
 THIRD ANGLE PROJECTION  
 MATERIAL: N/A  
 FINISH: N/A  
 WEIGHT: N/A  
 SCALE: NOT TO SCALE



30 Pine Street, Pittsburgh, PA 15223  
 Tel (412) 781-9003 Fax (412) 781-7840

NAME	DATE
DWN YAF	07/06/2023
CHK	

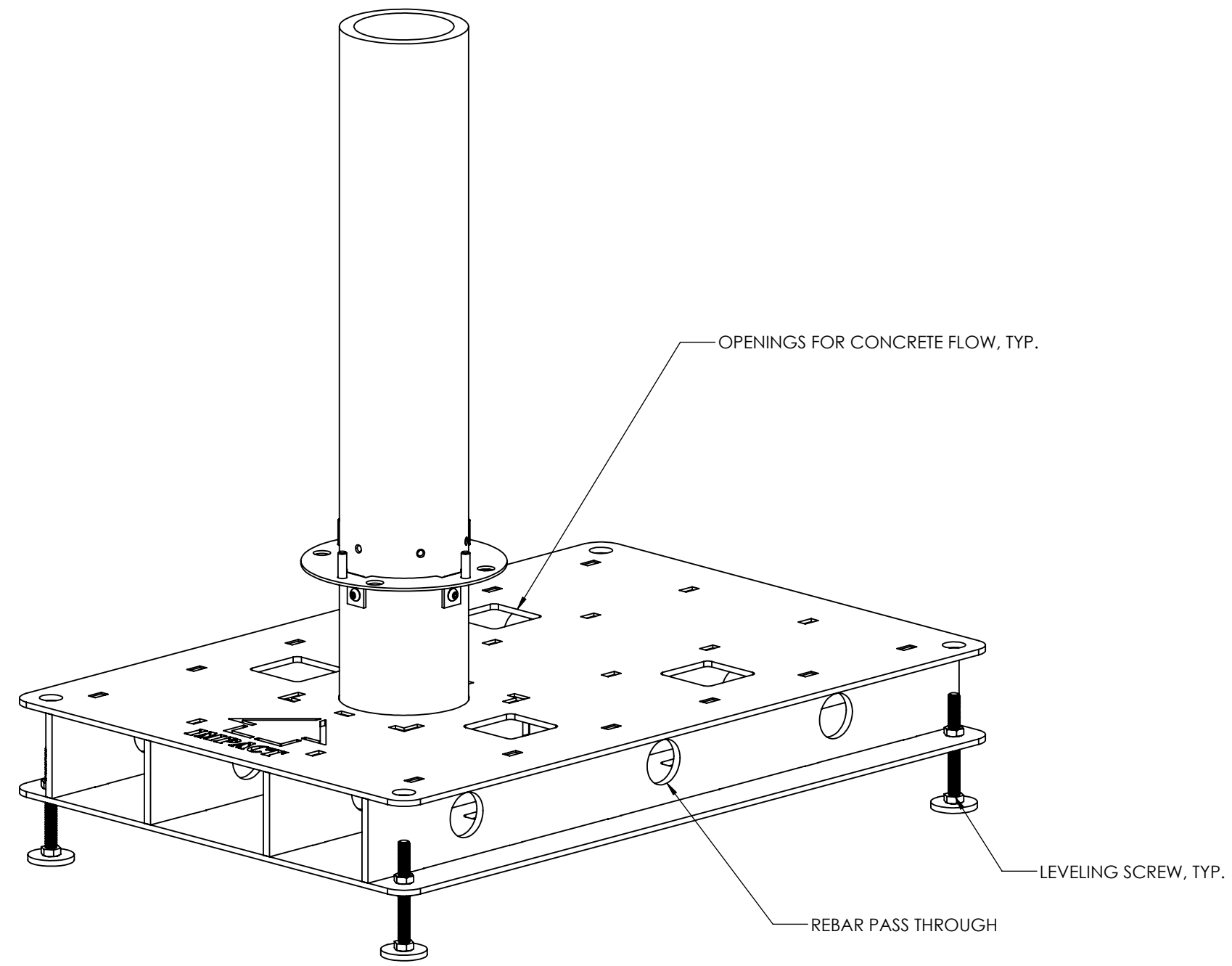
DESCRIPTION: <b>FORMS+SURFACES</b> <b>SC30-P1 SHALLOW SECURITY CORE, LIGHT INDIVIDUAL FOUNDATION, WITH PAVER</b>			
SIZE	DWG. NO.	REV	SHEET
B	SC30-SH-IND-PV-LBLCB-INSTALL	1	2 OF 3



8 7 6 5 4 3 2 1

D  
C  
B  
A

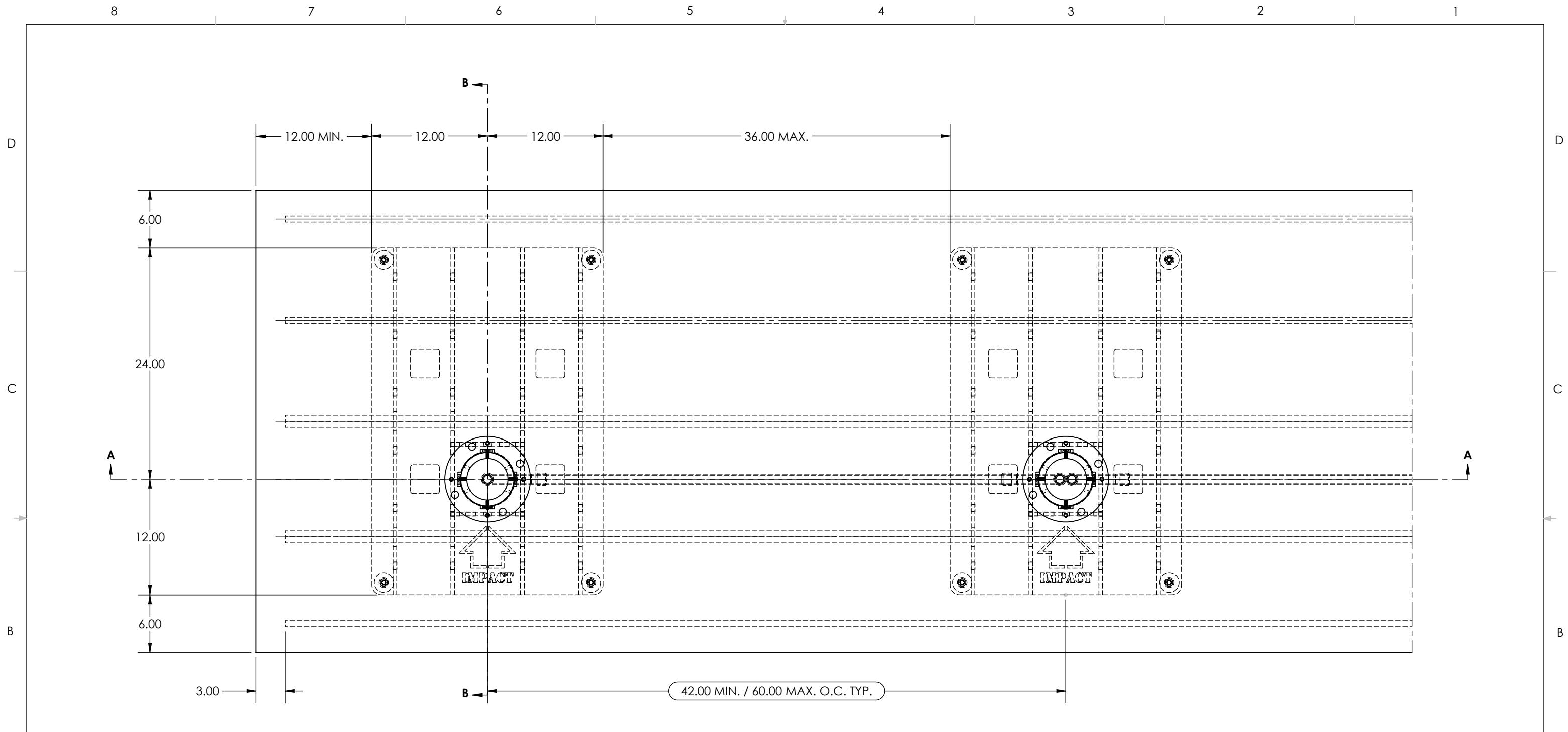
D  
C  
B  
A



**ISOMETRIC VIEW  
SECURITY CORE WELDMENT**

<b>UNLESS OTHERWISE SPECIFIED:</b> 1. PRIMARY DIM. ARE IN INCHES & SECONDARY [DIM] IN MM 2. TOLERANCES FRACTIONAL: ±1/32; ANGULAR/BEND: ±1° TWO PLACE DECIMAL ±.030 THREE PLACE DECIMAL ±.020 3. REMOVE ALL BURRS AND SHARP EDGES				30 Pine Street, Pittsburgh, PA 15223 Tel (412) 781-9003 Fax (412) 781-7840	
THIRD ANGLE PROJECTION		NAME DWN YAF	DATE 07/06/2023	DESCRIPTION: <b>FORMS+SURFACES</b> <b>SC30-P1 SHALLOW SECURITY CORE, LIGHT INDIVIDUAL FOUNDATION, WITH PAVER</b>	
MATERIAL: N/A		DO NOT SCALE DRAWING		SIZE B	
FINISH: N/A		<b>PROPRIETARY AND CONFIDENTIAL</b> THE INFORMATION CONTAINED IN THIS DRAWING IS THE SOLE PROPERTY OF FORMS + SURFACES. ANY REPRODUCTION IN PART OR AS A WHOLE WITHOUT WRITTEN PERMISSION IS PROHIBITED.		DWG. NO. SC30-SH-IND-PV-LBLCB-INSTALL	REV 1
WEIGHT: N/A		SCALE: NOT TO SCALE		SHEET 3 OF 3	

8 7 6 5 4 3 2 1



TOP VIEW

**UNLESS OTHERWISE SPECIFIED:**  
 1. PRIMARY DIM. ARE IN INCHES & SECONDARY [DIM] IN MM  
 2. TOLERANCES  
 FRACTIONAL: ±1/32; ANGULAR/BEND: ±1°  
 TWO PLACE DECIMAL ±.030  
 THREE PLACE DECIMAL ±.020  
 3. REMOVE ALL BURRS AND SHARP EDGES

THIRD ANGLE PROJECTION

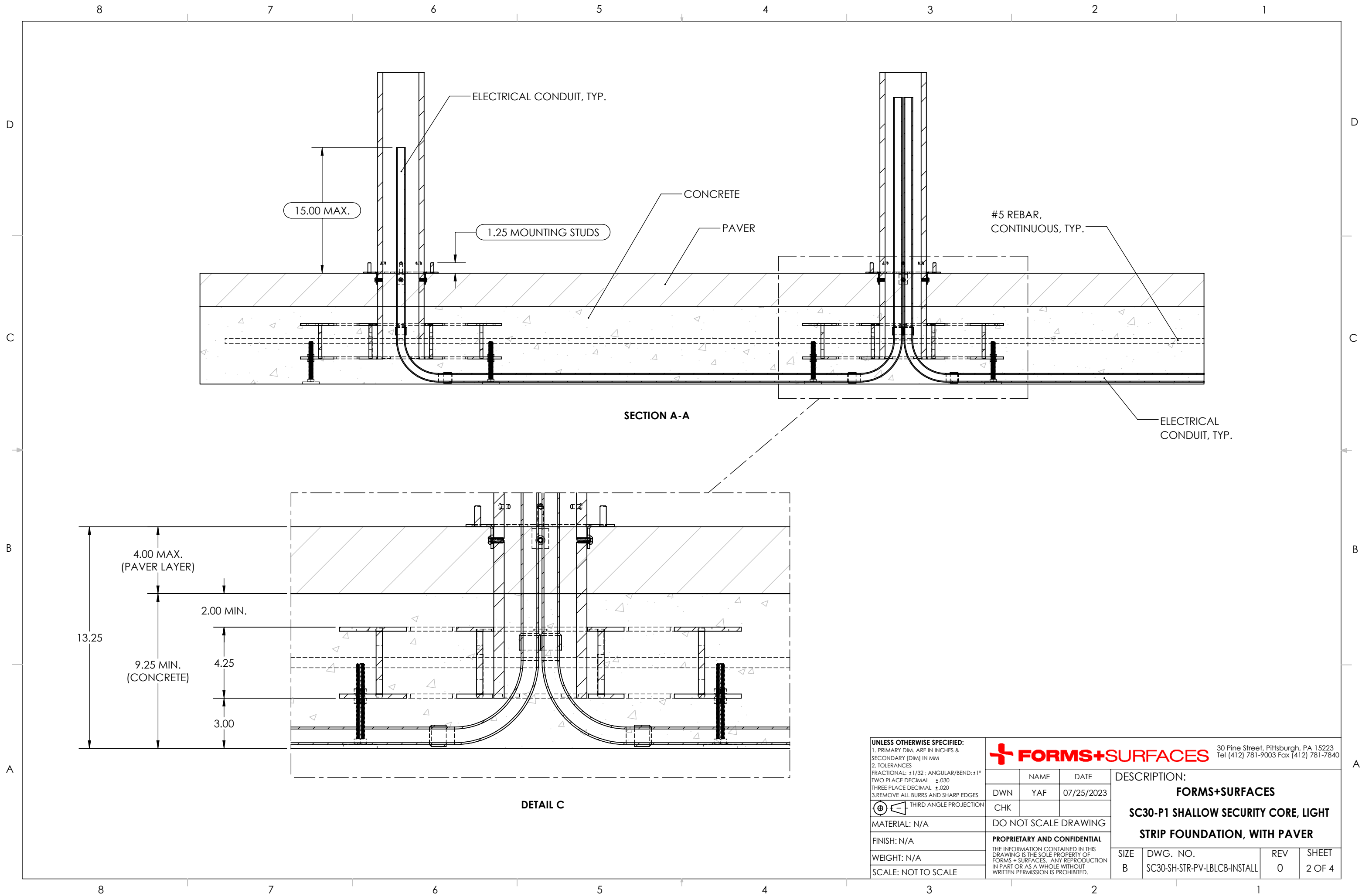
MATERIAL: N/A  
 FINISH: N/A  
 WEIGHT: N/A  
 SCALE: NOT TO SCALE

**FORMS+SURFACES** 30 Pine Street, Pittsburgh, PA 15223  
 Tel (412) 781-9003 Fax (412) 781-7840

NAME	DATE
DWN YAF	07/25/2023
CHK	

DESCRIPTION:			
<b>FORMS+SURFACES</b>			
<b>SC30-P1 SHALLOW SECURITY CORE, LIGHT STRIP FOUNDATION, WITH PAVER</b>			
SIZE	DWG. NO.	REV	SHEET
B	SC30-SH-STR-PV-LBLCB-INSTALL	0	1 OF 4

0	INITIAL RELEASE	-----	-----
REV.	DESCRIPTION	REVISED BY	DATE



**UNLESS OTHERWISE SPECIFIED:**  
 1. PRIMARY DIM. ARE IN INCHES & SECONDARY [DIM] IN MM  
 2. TOLERANCES  
 FRACTIONAL:  $\pm 1/32$ ; ANGULAR/BEND:  $\pm 1^\circ$   
 TWO PLACE DECIMAL  $\pm .030$   
 THREE PLACE DECIMAL  $\pm .020$   
 3. REMOVE ALL BURRS AND SHARP EDGES

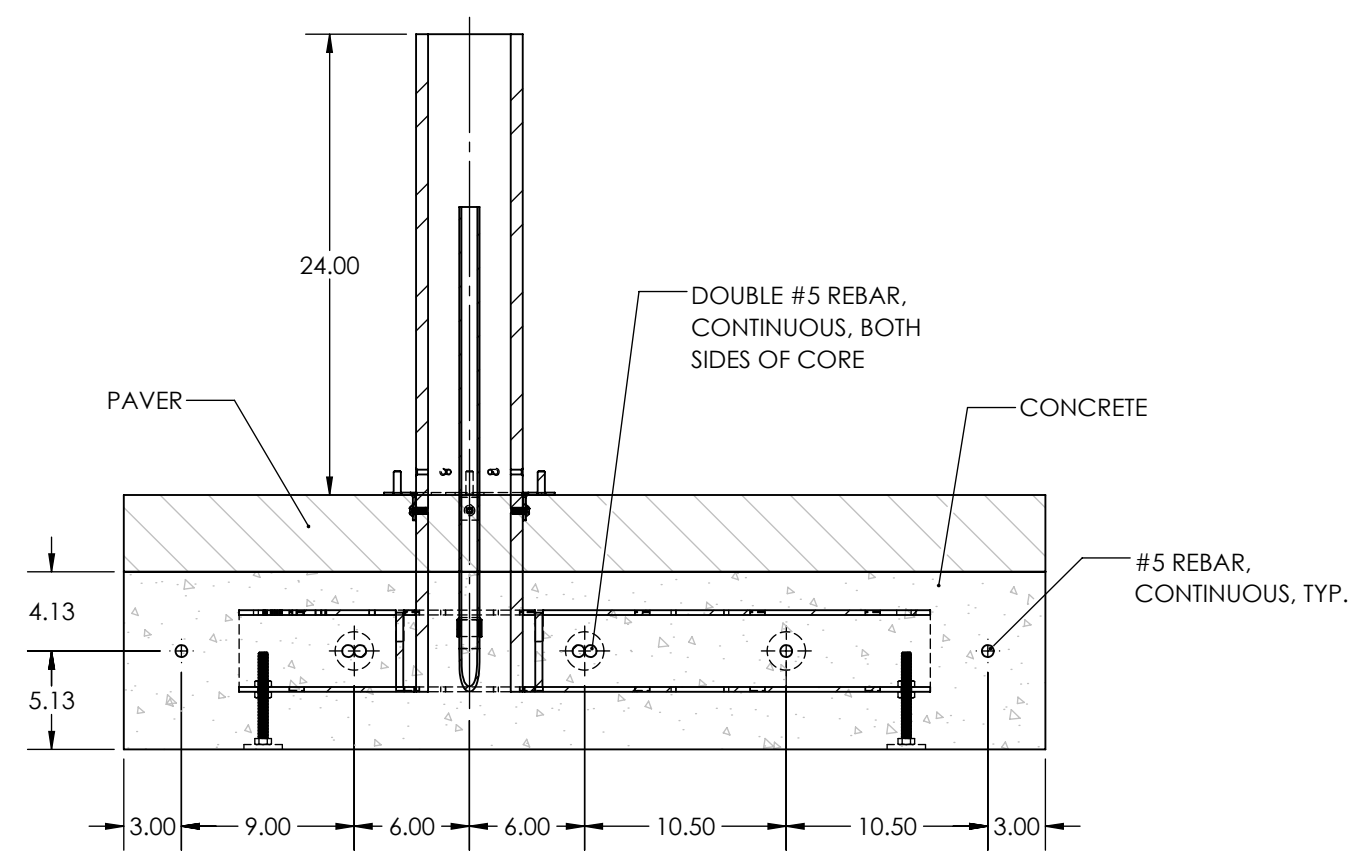
THIRD ANGLE PROJECTION

MATERIAL: N/A  
 FINISH: N/A  
 WEIGHT: N/A  
 SCALE: NOT TO SCALE

		NAME	DATE
		DWN	YAF 07/25/2023
		CHK	
<b>PROPRIETARY AND CONFIDENTIAL</b> <small>THE INFORMATION CONTAINED IN THIS DRAWING IS THE SOLE PROPERTY OF FORMS + SURFACES. ANY REPRODUCTION IN PART OR AS A WHOLE WITHOUT WRITTEN PERMISSION IS PROHIBITED.</small>			

30 Pine Street, Pittsburgh, PA 15223 Tel (412) 781-9003 Fax (412) 781-7840			
<b>DESCRIPTION:</b> <b>FORMS+SURFACES</b> <b>SC30-P1 SHALLOW SECURITY CORE, LIGHT STRIP FOUNDATION, WITH PAVER</b>			
SIZE	DWG. NO.	REV	SHEET
B	SC30-SH-STR-PV-LBLCB-INSTALL	0	2 OF 4

D  
C  
B  
A



SECTION B-B

NOTES:

1. FOOTINGS HAVE BEEN DESIGNED TO BEAR ON UNDISTURBED SOIL OR PROPERLY COMPACTED ENGINEERED FILL ASSUMING A NET BEARING CAPACITY OF 2000 PSF.
2. REINFORCED CONCRETE WORK SHALL BE DONE IN ACCORDANCE WITH THE "BUILDING CODE REQUIREMENTS FOR REINFORCED CONCRETE" (ACI 318) AND THE SPECIFICATIONS FOR STRUCTURAL CONCRETE (ACI 301) OF THE AMERICAN CONCRETE INSTITUTE (EDITIONS AS REQUIRED BY GOVERNING CODE).
3. CAST-IN-PLACE CONCRETE SHALL BE NORMAL WEIGHT CONCRETE WITH A MINIMUM 28-DAY COMPRESSIVE STRENGTH (F'C) OF 5000 PSI UNO.
4. PROVIDE 6% (+/-1.5%) AIR ENTRAINMENT IN CONCRETE EXPOSED TO FREEZE/THAW.
5. DEFORMED BAR REINFORCEMENT SHALL BE ASTM A615, GRADE 60; SEE CHART FOR SIZING.
6. REINFORCEMENT SHALL BE SECURELY HELD IN PLACE WHILE PLACING CONCRETE. IF REQUIRED, ADDITIONAL BARS, STIRRUPS, OR CHAIRS SHALL BE PROVIDED TO FURNISH SUPPORT FOR SPECIFIED BARS.

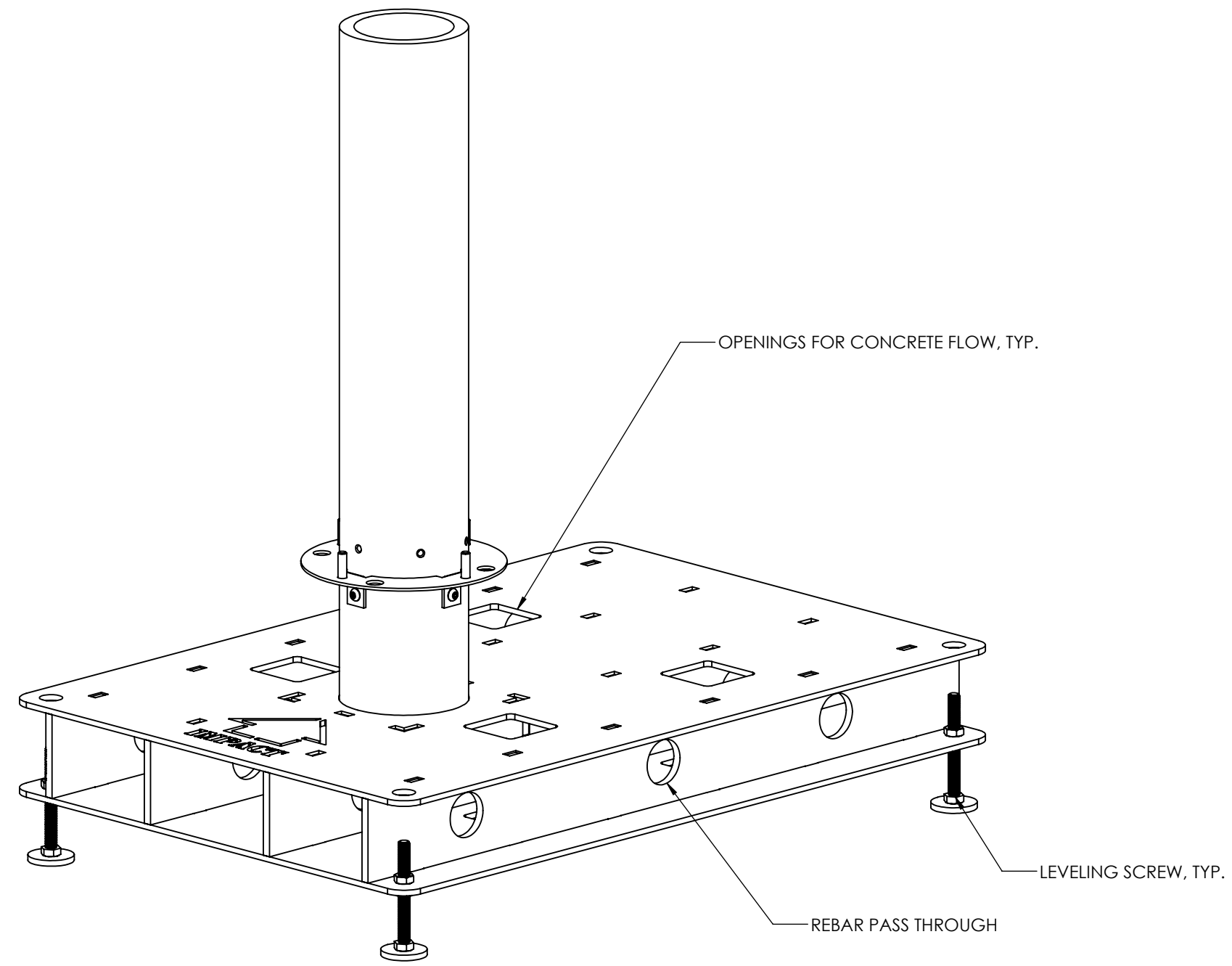
REBAR CHART	
BAR SIZE	DIAMETER
#5	Ø 0.625

<p><b>UNLESS OTHERWISE SPECIFIED:</b>                  1. PRIMARY DIM. ARE IN INCHES &amp; SECONDARY [DIM] IN MM                  2. TOLERANCES                  FRACTIONAL: ±1/32; ANGULAR/BEND: ±1°                  TWO PLACE DECIMAL ±.030                  THREE PLACE DECIMAL ±.020                  3. REMOVE ALL BURRS AND SHARP EDGES</p>		<p><b>FORMS+SURFACES</b> 30 Pine Street, Pittsburgh, PA 15223                  Tel (412) 781-9003 Fax (412) 781-7840</p>							
<p>THIRD ANGLE PROJECTION</p>		<p>NAME: DWN                  DATE: 07/25/2023</p>	<p>DESCRIPTION:  <b>FORMS+SURFACES</b>  <b>SC30-P1 SHALLOW SECURITY CORE, LIGHT STRIP FOUNDATION, WITH PAVER</b></p>						
<p>MATERIAL: N/A</p>		<p>CHK: [Signature]</p>							
<p>FINISH: N/A</p>		<p>DO NOT SCALE DRAWING</p>							
<p>WEIGHT: N/A</p>		<p><b>PROPRIETARY AND CONFIDENTIAL</b>                  THE INFORMATION CONTAINED IN THIS DRAWING IS THE SOLE PROPERTY OF FORMS + SURFACES. ANY REPRODUCTION IN PART OR AS A WHOLE WITHOUT WRITTEN PERMISSION IS PROHIBITED.</p>							
<p>SCALE: NOT TO SCALE</p>		<p>SIZE: B</p>	<table border="1"> <tr> <td>DWG. NO.</td> <td>REV</td> <td>SHEET</td> </tr> <tr> <td>SC30-SH-STR-PV-LBLCB-INSTALL</td> <td>0</td> <td>3 OF 4</td> </tr> </table>	DWG. NO.	REV	SHEET	SC30-SH-STR-PV-LBLCB-INSTALL	0	3 OF 4
DWG. NO.	REV	SHEET							
SC30-SH-STR-PV-LBLCB-INSTALL	0	3 OF 4							

8 7 6 5 4 3 2 1

D  
C  
B  
A

D  
C  
B  
A



**ISOMETRIC VIEW  
SECURITY CORE WELDMENT**

<b>UNLESS OTHERWISE SPECIFIED:</b> 1. PRIMARY DIM. ARE IN INCHES & SECONDARY [DIM] IN MM 2. TOLERANCES FRACTIONAL: $\pm 1/32$ ; ANGULAR/BEND: $\pm 1^\circ$ TWO PLACE DECIMAL $\pm .030$ THREE PLACE DECIMAL $\pm .020$ 3. REMOVE ALL BURRS AND SHARP EDGES THIRD ANGLE PROJECTION		<b>FORMS+SURFACES</b> 30 Pine Street, Pittsburgh, PA 15223 Tel (412) 781-9003 Fax (412) 781-7840								
MATERIAL: N/A FINISH: N/A WEIGHT: N/A SCALE: NOT TO SCALE		<table border="1"> <thead> <tr> <th>NAME</th> <th>DATE</th> </tr> </thead> <tbody> <tr> <td>DWN YAF</td> <td>07/25/2023</td> </tr> <tr> <td>CHK</td> <td></td> </tr> </tbody> </table>	NAME	DATE	DWN YAF	07/25/2023	CHK		DESCRIPTION: <b>FORMS+SURFACES</b> <b>SC30-P1 SHALLOW SECURITY CORE, LIGHT STRIP FOUNDATION, WITH PAVER</b>	
NAME	DATE									
DWN YAF	07/25/2023									
CHK										
PROPRIETARY AND CONFIDENTIAL THE INFORMATION CONTAINED IN THIS DRAWING IS THE SOLE PROPERTY OF FORMS + SURFACES. ANY REPRODUCTION IN PART OR AS A WHOLE WITHOUT WRITTEN PERMISSION IS PROHIBITED.		<table border="1"> <thead> <tr> <th>SIZE</th> <th>DWG. NO.</th> <th>REV</th> <th>SHEET</th> </tr> </thead> <tbody> <tr> <td>B</td> <td>SC30-SH-STR-PV-LBLCB-INSTALL</td> <td>0</td> <td>4 OF 4</td> </tr> </tbody> </table>	SIZE	DWG. NO.	REV	SHEET	B	SC30-SH-STR-PV-LBLCB-INSTALL	0	4 OF 4
SIZE	DWG. NO.	REV	SHEET							
B	SC30-SH-STR-PV-LBLCB-INSTALL	0	4 OF 4							

8 7 6 5 4 3 2 1