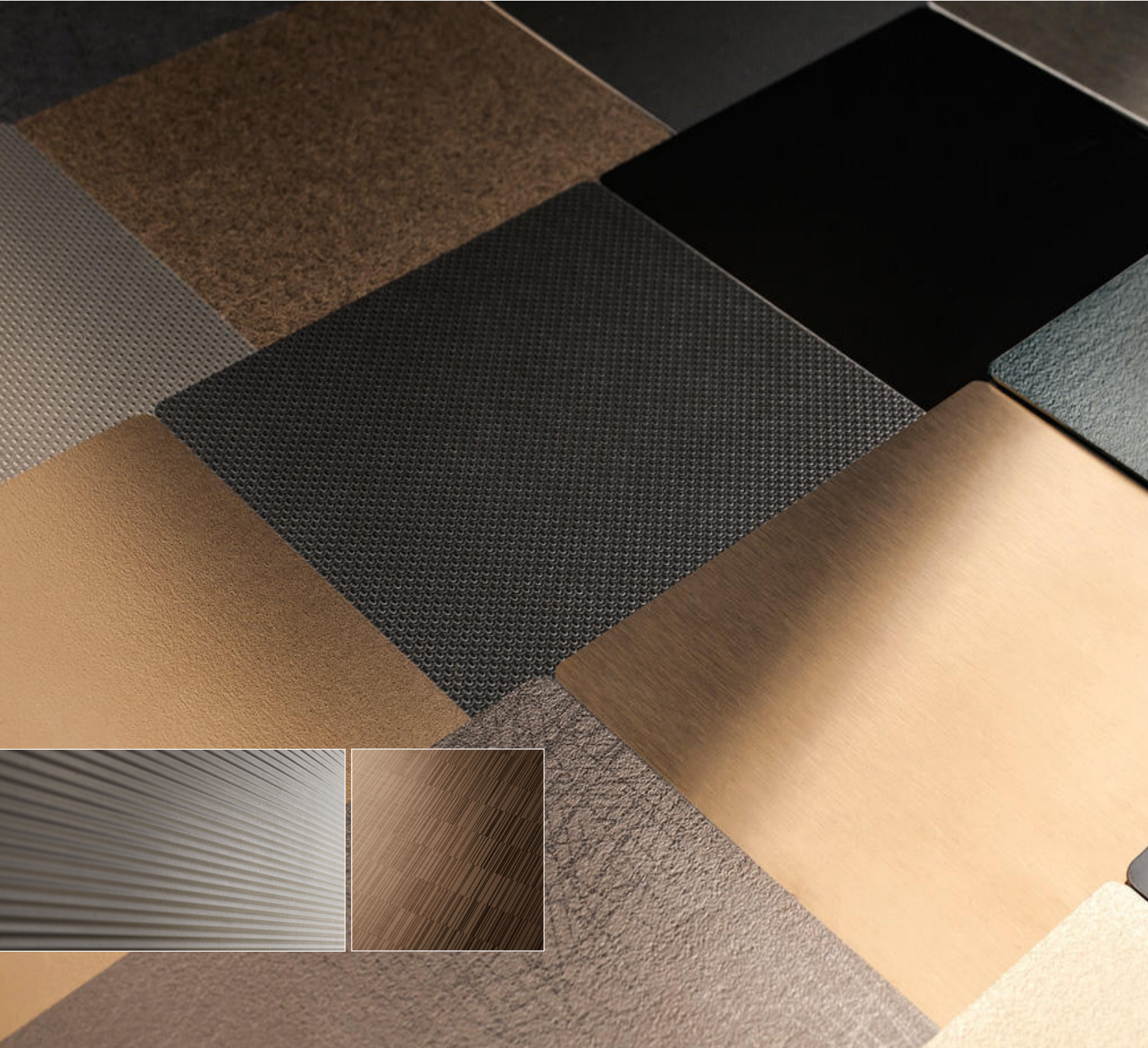




FUSED METAL®

PRODUCT DATA





FUSED METAL®

PRODUCT DATA

Fused Metal is Forms+Surfaces' exclusive line of colored stainless steel. We use vapor deposition technology to fuse titanium alloys at the molecular level to stainless steel substrates. Fused Metal provides the durability and low maintenance of stainless steel with a range of rich color options that includes Fused Bronze, Fused Graphite, Fused Nickel Bronze, Fused Nickel Silver and Fused White Gold.

FUSED METAL FEATURES

- Suitable for interior and select exterior applications.
- Finishes include a variety of High-Durability options—work-hardened surfaces that have enhanced resistance to abrasion and wear.
- Products are manufactured to specification and provided cut to size and ready to install.

MATERIAL DESCRIPTION

Fused Metal selections are defined by four basic parameters that are key to product specification:

COLOR	FINISH	PATTERN	TREATMENT
Choose a metal: Fused Bronze, Fused Graphite, Fused Nickel Bronze, Fused Nickel Silver or Fused White Gold.	A variety of distinctive finishes are available including standard and High-Durability options. Please see pages 2-4 for available finish options for each Fused Metal.	The pattern will be applied to the metal/ finish combination you have selected. Standard Impression and Eco-Etch patterns are shown on pages 5-9. Custom patterns can also be requested.	Ceramiloc+ treatment is an invisible, protective treatment that significantly increases the fingerprint resistance and maintenance ease of Fused Metal. Ceramiloc+ is available with any finish and pattern that does not incorporate Mirror finish. Additional details can be found in the Ceramiloc+ Product Data Sheet on our website.

PRODUCTS & APPLICATIONS

Fused Metal is ideal for trim, wainscoting, counter facings and more.

SHEET GOODS	F+S SYSTEMS
<p>Includes our full line of Fused Metal materials in standard sheet sizes or sheared to your specifications.</p> <ul style="list-style-type: none"> • Standard sheet sizes are 48" x 96" (1219mm x 2438mm) and 48" x 120" (1219mm x 3048mm). • When calculating yields or determining maximum usable sheet lengths, consider that 13mm from each 1219mm edge will not be 100% usable. An additional 2mm (per edge) safety factor is also recommended as a cutting allowance since end-user fabrication equipment will vary. For example: a standard 1219mm x 2438mm (48" x 96") sheet will have a usable length of 2408mm (94.80"); a standard 1219mm x 3048mm (48" x 120") sheet will have a usable length of 3018mm (118.82"). • Standard sheet thickness are 0.8mm and 1.5mm, with the exception of our High-Durability finishes which are not available in 48" x 96" at the 1.5mm thickness. • The .032" (0.8mm) thickness has a standard weight of approximately 1.6 lbs./sq. ft (7.8 kg/sq. m) and the .063" (1.5mm) thickness weighs approximately 2.5 lbs./sq.ft (12.2 kg/ sq.m). <p>Edge returns and many other add-on features are available.</p>	<ul style="list-style-type: none"> • LEVELr Wall Cladding System • LEVELr Column System • LEVELr Elevator Interiors • LEVELe Wall Cladding System • LEVELe Column System • LEVELe Elevator Interiors • LEVELc Column System • LEVELc-1000 Elevator Interiors • LEVELc-2000 Elevator Interiors • Elevator Ceilings • Elevator Door Skins • Stile & Rail Doors

PROTECTIVE FILM
All Fused Metal supplied as sheet goods and in our systems products comes with a protective film for added protection during transportation, machining and installation. Even with the protective film, care should be taken while handling the product. We recommended leaving the film on during installation.

MAINTENANCE & FIRE RATING

MAINTENANCE	FIRE RATING
Fingerprints, smudges and more persistent dirt can be removed by using a 1:10 dilution of Dawn® detergent and warm water. After cleaning, the surface should be rinsed with water to prevent streaking and dried with a clean microfiber towel. Do not use harsh abrasives, acids or chlorine-based cleaners or cleaning tools containing carbon steel, such as steel wool or wire brushes. Additional details can be found in the Architectural Surfaces Care & Maintenance document on our website.	Fused Metal is inherently non-combustible and generally considered to be NFPA and IBC Class A fire rated and UBC Class 1 fire rated.



FUSED METAL®

FINISH OPTIONS

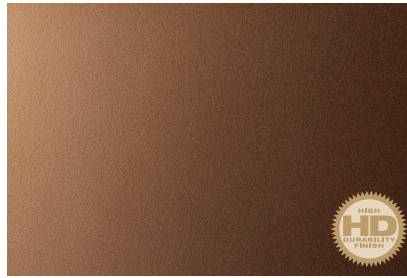
Fused Metal is available in a variety of distinctive finishes including standard and High-Durability options. High-Durability finishes—designated by the “HD” logo below—are manufactured in a process that creates a work-hardened surface with enhanced resistance to abrasion and wear.

All Fused Metal surfaces, including those with “non-directional” finishes like Mirror and Diamond, have at least a subtle directional grain that is inherent to the finishing process. Directionality is indicated by arrows on the protective film applied to each Fused Metal sheet. For installation, it’s your responsibility to align the sheets directionally; otherwise, reflectivity and appearance may be inconsistent. When Fused Metal is used in F+S Systems, grain direction will be indicated on the F+S supplied drawings that accompany each order.

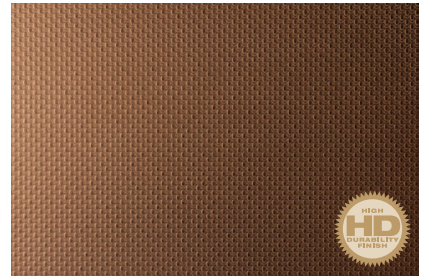
FUSED BRONZE™



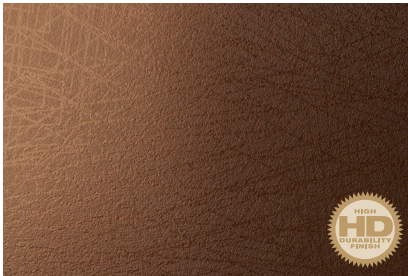
SANDSTONE™



SEASTONE™



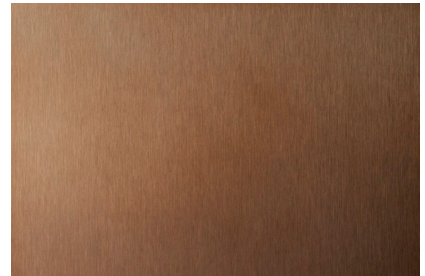
LINEN™



DIAMOND™



MIRROR



SATIN

Note: Because different computers will render colors and textures differently, actual finishes may vary from those shown.



FUSED METAL®

PRODUCT DATA

FUSED GRAPHITE™



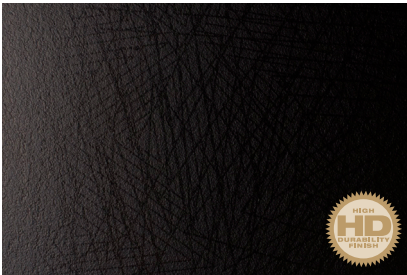
SANDSTONE™



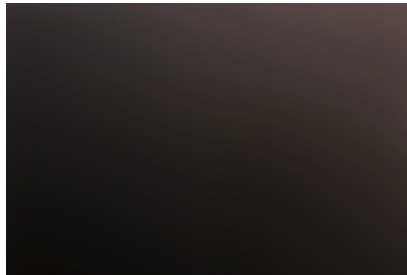
SEASTONE™



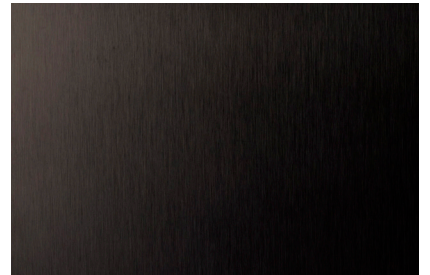
LINEN™



DIAMOND™

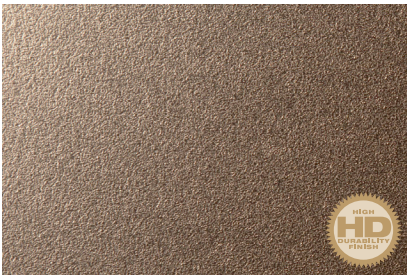


MIRROR

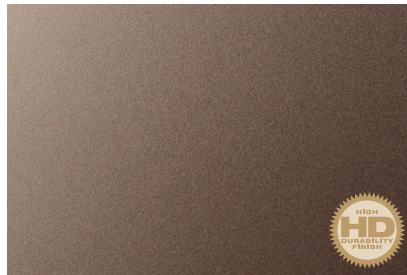


SATIN

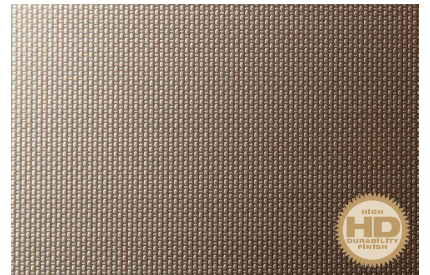
FUSED NICKEL BRONZE™



SANDSTONE™



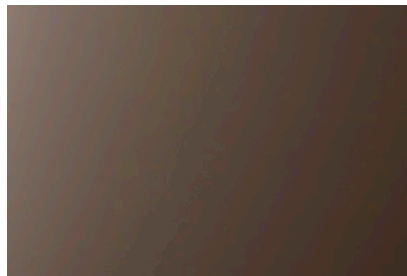
SEASTONE™



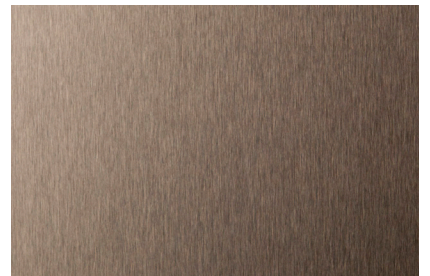
LINEN™



DIAMOND™



MIRROR



SATIN

Note: Because different computers will render colors and textures differently, actual finishes may vary from those shown.

T 1.800.451.0410 | F 412.385.4715 | www.forms-surfaces.com

FORMS+SURFACES®

© 2023 Forms+Surfaces® | All dimensions are nominal. Specifications and pricing subject to change without notice. For the most current version of this document, please refer to our website at www.forms-surfaces.com.



FUSED METAL®

PRODUCT DATA

FUSED NICKEL SILVER™



SANDSTONE™



SEASTONE™



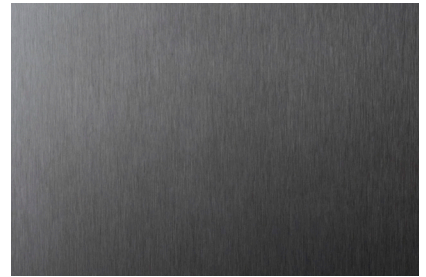
LINEN™



DIAMOND™



MIRROR



SATIN

FUSED WHITE GOLD™



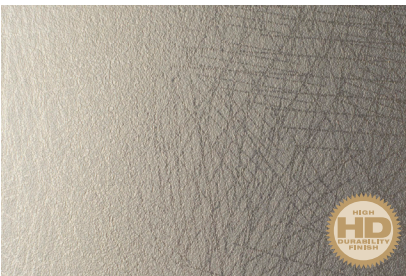
SANDSTONE™



SEASTONE™



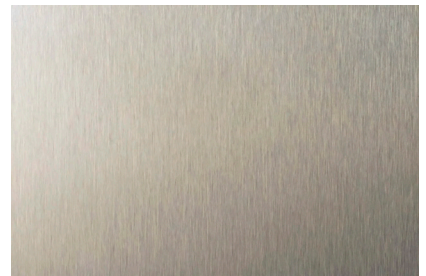
LINEN™



DIAMOND™



MIRROR



SATIN

Note: Because different computers will render colors and textures differently, actual finishes may vary from those shown.

T 1.800.451.0410 | F 412.385.4715 | www.forms-surfaces.com

FORMS+SURFACES®

© 2023 Forms+Surfaces® | All dimensions are nominal. Specifications and pricing subject to change without notice. For the most current version of this document, please refer to our website at www.forms-surfaces.com.



PATTERN OPTIONS

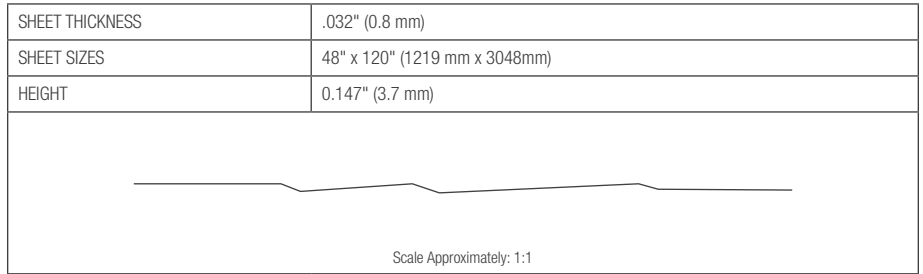
Patterns are optional applied designs that add visual interest and expanded customization potential to Fused Metal surfaces. From a functional standpoint, patterns pick up where metals and finishes leave off. Forms+Surfaces Fused Metal patterns are grouped into two categories: Impression and Eco-Etch.

IMPRESSION™ PATTERNS

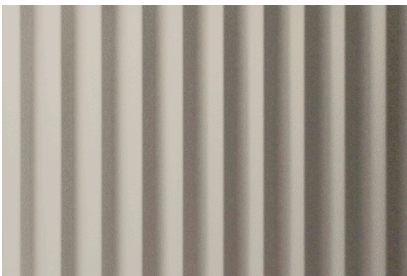
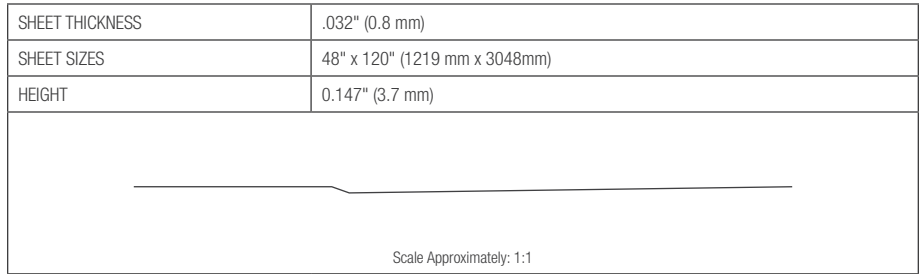
Forms+Surfaces proprietary manufacturing capabilities include large-scale stamping equipment that can apply unique, full-press patterns across an entire sheet of material using a single tool. The result is a series of beautiful, high-relief patterns that add visual impact, enhanced durability and a rich, tactile feel. Some Impression patterns are also available in other materials such as Stainless Steel and our exclusive Bonded Quartz and Bonded Metal®, making it easy to carry a design theme throughout an installation in a variety of materials.



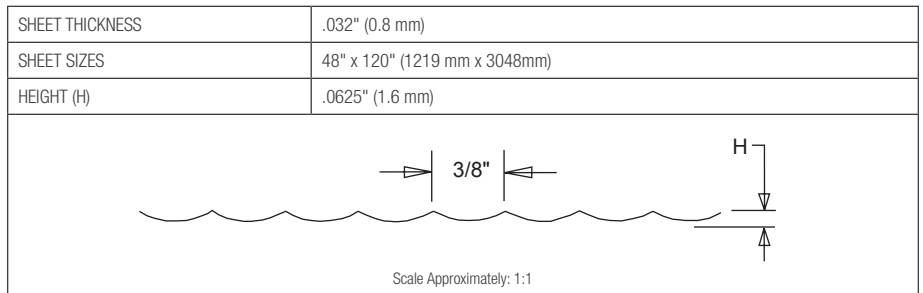
CHAMPAGNE™



CHARDONNAY™



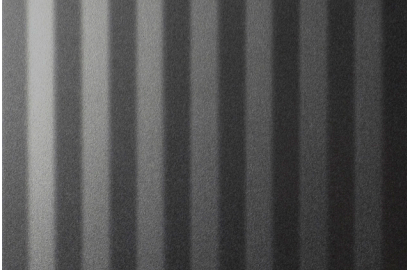
DALLAS™



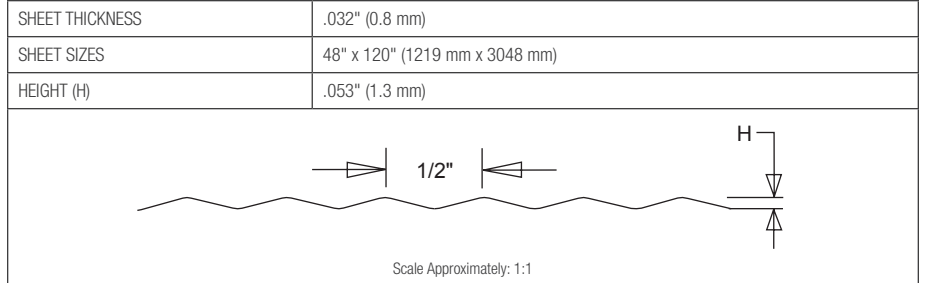
Note: Pattern is available in horizontal or vertical orientation



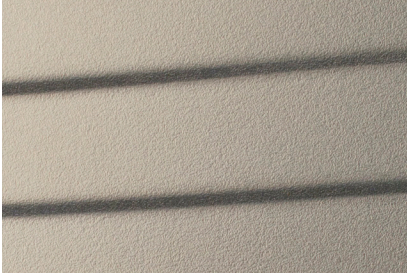
IMPRESSION PATTERNS, CONTINUED



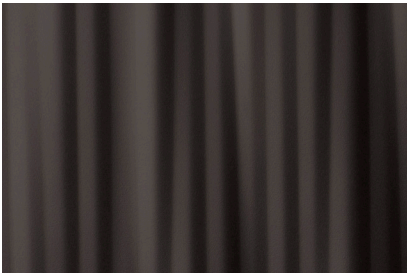
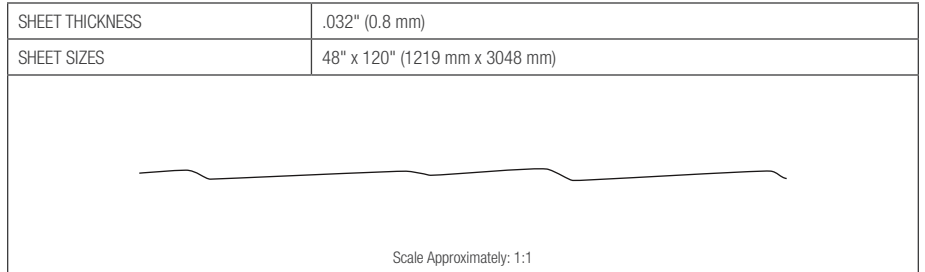
DENVER™



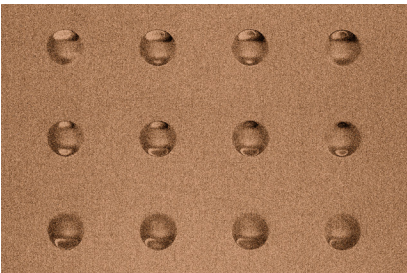
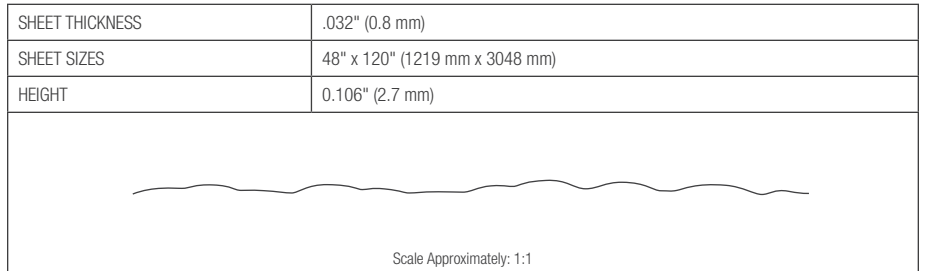
Note: Pattern is available in horizontal or vertical orientation



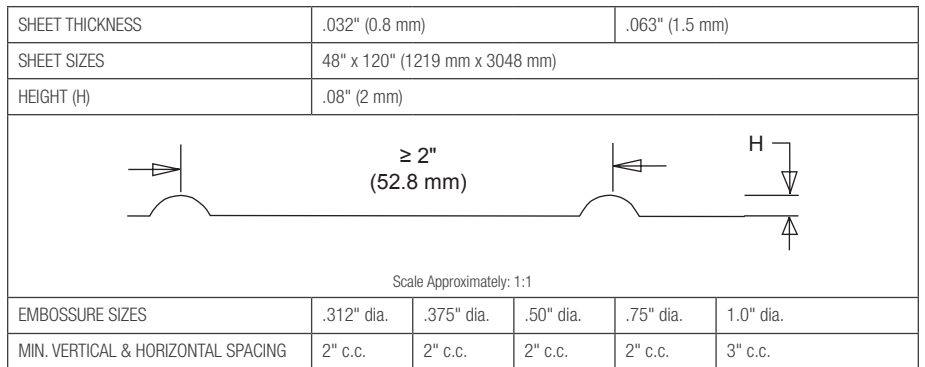
DUNE™



KALAHARI™

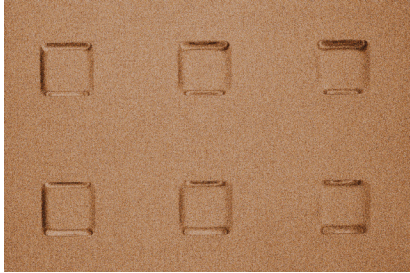


CIRCLE



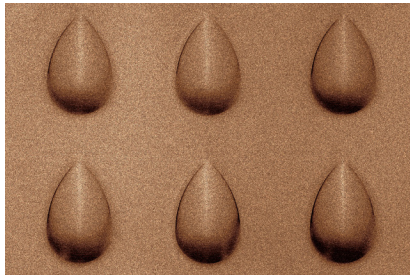


IMPRESSION PATTERNS, CONTINUED



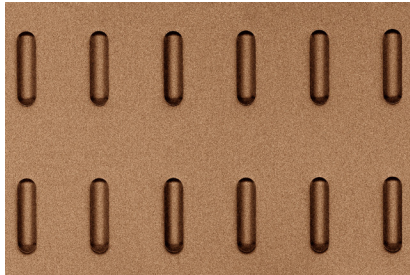
SQUARE

SHEET THICKNESS	.032" (0.8 mm)	.063" (1.5 mm)			
SHEET SIZES	48" x 120" (1219 mm x 3048 mm)				
HEIGHT (H)	.06" (1.5 mm)				
<p style="text-align: center;">Scale Approximately: 1:1</p>					
EMBOSSURE SIZES	.375" squ.	.50" squ.	.625" squ	1" squ.	1.5" squ.
MIN. VERTICAL & HORIZONTAL SPACING	2" c.c.	2" c.c.	2" c.c.	3" c.c.	4" c.c.



TEARDROP™

SHEET THICKNESS	.032" (0.8 mm)	.063" (1.5 mm)			
SHEET SIZES	48" x 120" (1219 mm x 3048 mm)				
HEIGHT (H)	.134" (3.4 mm)				
<p style="text-align: center;">Scale Approximately: 1:1</p>					
EMBOSSURE SIZE	.88" x 1.4"				
MIN. VERTICAL & HORIZONTAL SPACING	3" c.c.				



TECH™

SHEET THICKNESS	.032" (0.8 mm)	.063" (1.5 mm)			
SHEET SIZES	48" x 120" (1219 mm x 3048 mm)				
HEIGHT (H)	.075" (1.9 mm)				
<p style="text-align: center;">Scale Approximately: 1:1</p>					
EMBOSSURE SIZE	.25" x 1"				
MIN. VERTICAL SPACING	1.5" c.c.				
MIN. HORIZONTAL SPACING	1" c.c.				

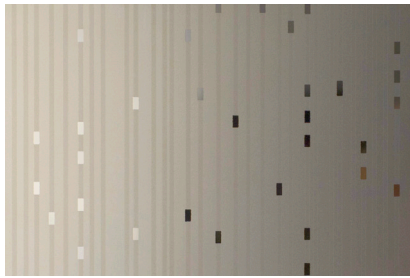


ECO-ETCH® PATTERNS

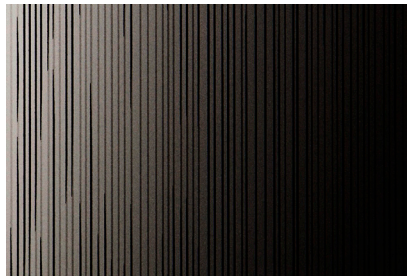
Beautiful etched designs are applied to Fused Metal using an advanced photolithographic bead-blasting system instead of acids or other harmful chemicals. Advantages of the Eco-Etch process include:

SIZE	SPEED	CONSISTENCY	ECOLOGICALLY RESPONSIBLE
The largest physical etching system in North America, our equipment can handle materials up to two meters wide by six meters long. Standard sheet size of 48" x 120" and standard sheet thicknesses of 0.8 mm and 1.5 mm are available.	The physical etching process can be completed in a fraction of the time required for traditional chemical etching.	Our proprietary computer-controlled system ensures an even blast pressure and a consistent finish, even on the largest surfaces.	Because our Eco-Etch is physically applied, it does not require etching acid or other harmful chemicals and no toxic waste is generated. The beads used in the process are contained within a closed chamber; used beads are recycled and returned to the process for reuse.

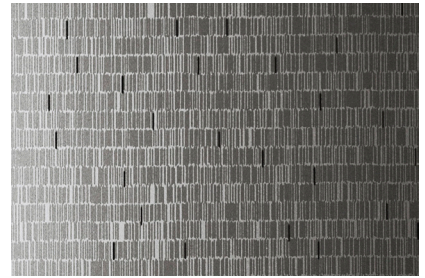
Standard designs include both overall and full-sheet patterns. Eco-Etch doors and elevator door skins also come in their own range of patterns optimized for door face applications. Please note that our standard patterns are only starting points; the flexibility and speed of our Eco-Etch system allow a wealth of design options with artwork supplied by the specifier or developed by Forms+Surfaces.



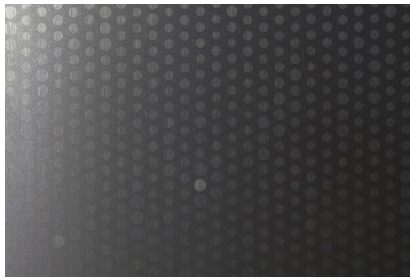
CITY LIGHTS™



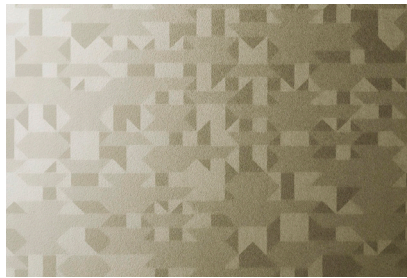
CURRENT™



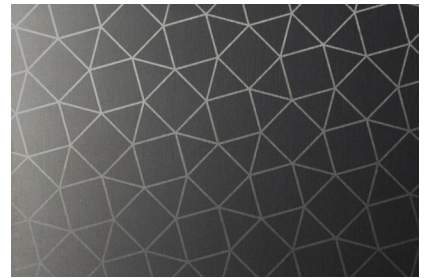
DASH™



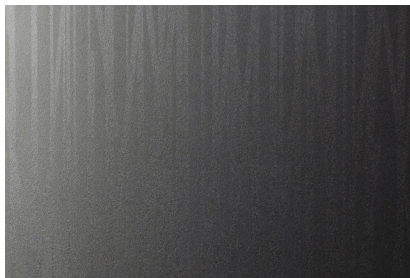
FLICKER™



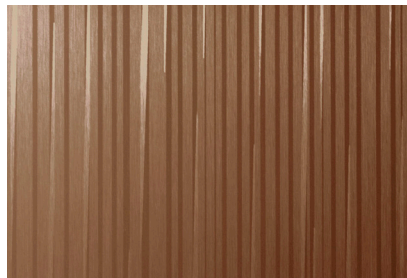
GLACIER™



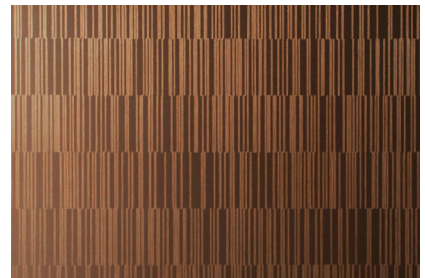
MICA™



REEDS™



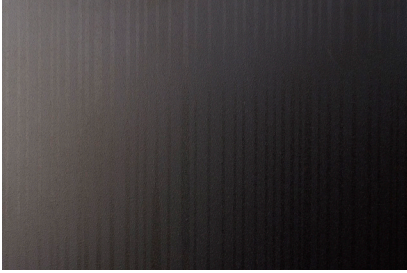
SEAGRASS™



SEQUENCE™



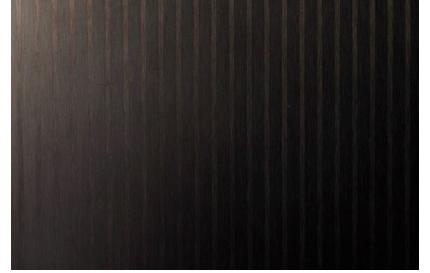
ECO-ETCH PATTERNS, CONTINUED



SILKWORM™



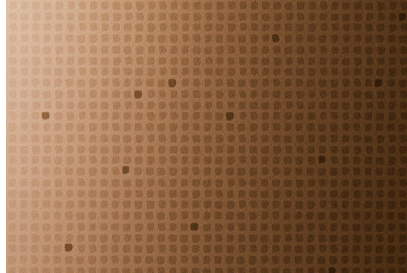
STACKS™



STRIPE™



THATCH™



TRACE™

Usage rights, permissions, and/or copyrights for all submitted artwork are the responsibility of the submitting party. Forms+Surfaces is not responsible for obtaining or verifying these rights or permissions and cannot be held liable for conflicts of rights tied to submitted artwork.



FUSED METAL®

PRODUCT DATA

CUSTOM PATTERNS

As the international leader in high-quality Fused Metal, Forms+Surfaces is always willing to consider custom pattern variations and modifications to meet specific project needs. Please contact us to discuss your requirements.

FINISH & PATTERN COMBINATIONS

PATTERN OPTIONS		FUSED METAL FINISHES					
		Sandstone	Seastone	Linen	Diamond	Mirror	Satin
IMPRESSION	Flat (no pattern)	•	•	•	•	•	•
	Champagne	•	•	•	•	•	•
	Chardonnay	•	•	•	•	•	•
	Dallas	•	•	•	•	•	•
	Denver	•	•	•	•	•	•
	Dune	•	•	•	•	•	•
	Kalahari	•	•	•	•	•	•
	Circle	•	•	•	•	•	•
	Square	•	•	•	•	•	•
	Teardrop	•	•	•	•	•	•
	Tech	•	•	•	•	•	•
ECO-ETCH	City Lights		•			•	•
	Current		•			•	•
	Dash		•			•	•
	Flicker		•			•	•
	Glacier		•			•	•
	Mica		•			•	•
	Reeds		•			•	•
	Seagrass		•			•	•
	Sequence		•			•	•
	Silkworm		•			•	•
	Stacks		•			•	•
	Stripe		•			•	•
	Thatch		•			•	•
	Trace		•			•	•
Custom	•	•	•	•	•	•	

ENVIRONMENTAL CONSIDERATIONS

Please refer to the Fused Metal Product Environmental Data Sheet for detailed environmental impact information.

HOW TO SPECIFY

To order please indicate material, finish, pattern and quantity.