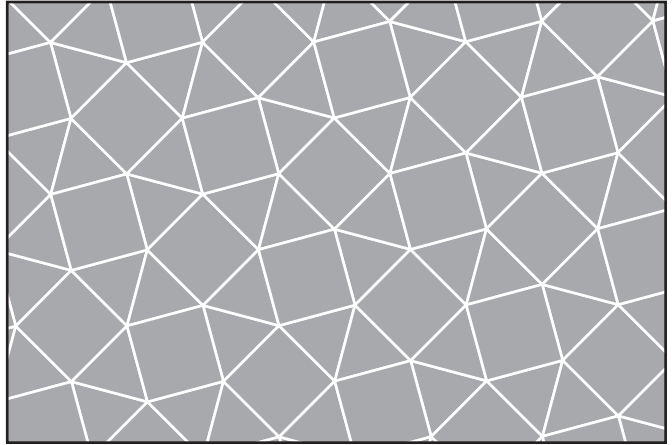


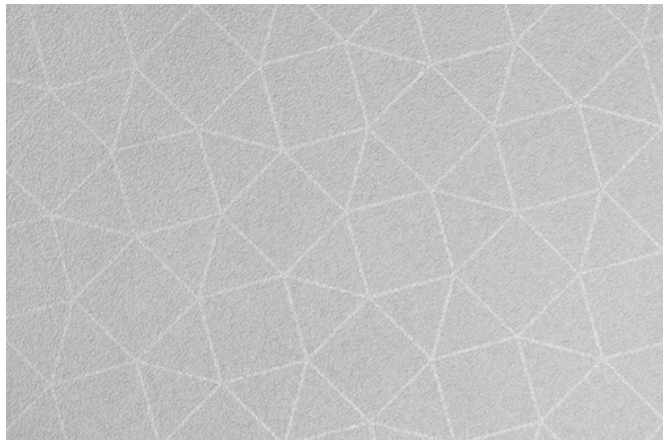
FULL SHEET PATTERN ORIENTATION

NOTE: THE ABOVE ILLUSTRATION IS FOR ORIENTATION ONLY. ACTUAL PATTERN MAY VARY FROM PATTERN SHOWN.



DETAIL 1:1

PROFILE 1:1



SWATCH

PART #: 99147-030

MATERIAL: STAINLESS STEEL

FINISH: SEASTONE

PATTERN: MICA

SHEET DIMENSIONS: 48" X 120" X .032"

QTY: \_\_\_\_\_

APPROVED BY: \_\_\_\_\_

|  |  |  |               |
|--|--|--|---------------|
| UNLESS OTHERWISE SPECIFIED, DIMENSIONS ARE IN INCHES   |  | <b>FORMS+SURFACES</b> ® 30 Pine Street, Pittsburgh, PA 15223<br>Tel(800) 451-0410 Fax(412) 781-7840  |               |
| TOLERANCES (UNLESS OTHERWISE SPECIFIED):<br>FRACTIONAL: $\pm 1/4$<br>ANGULAR/BEND: $\pm 1^\circ$<br>TWO PLACE DECIMAL: $\pm 0.030$<br>THREE PLACE DECIMAL: $\pm 0.020$ |  | NAME   | DATE          |
| MATERIAL: STAINLESS STEEL  |  | DWN  | JS 06/20/2011 |
| PATTERN: MICA  |  | DO NOT SCALE DRAWING   |               |
| WEIGHT: -  |  | PROPRIETARY AND CONFIDENTIAL   |               |
| SOURCE: -  |  | THE INFORMATION CONTAINED IN THIS DRAWING IS THE SOLE PROPERTY OF FORMS+SURFACES. ANY REPRODUCTION IN PART OR AS A WHOLE WITHOUT WRITTEN PERMISSION IS PROHIBITED. |               |
| SCALE: N.T.S   |  | SIZE   | DWG. NO.      |
|  |  | B  | 000           |
|  |  | REV  | SHEET         |
|  |  | 000  | 1 OF 1        |