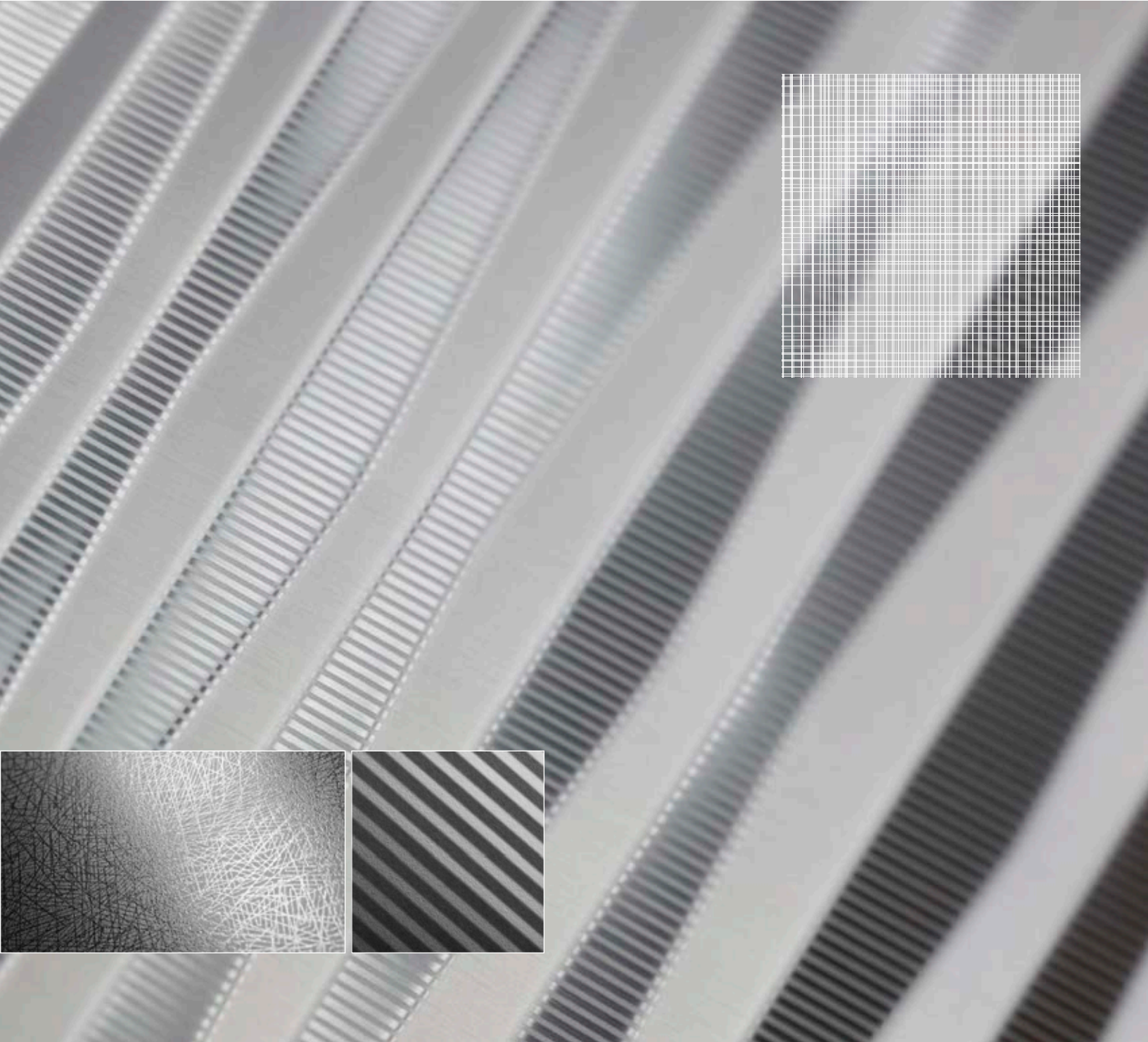




# STAINLESS STEEL

PRODUCT DATA





# STAINLESS STEEL

PRODUCT DATA

Unmatched in quality and beauty, Forms+Surfaces is the world's premiere resource for **Stainless Steel** sheet goods and related products. You'll find a wide variety of finishes and patterns with limitless design options.

For applications that require exceptional resistance to abrasion and wear, select among our High-Durability finishes including Sandstone, Seastone, Linen and Diamond. These work-hardened surfaces are extraordinarily durable and perfect for high-traffic public areas.

## MATERIAL DESCRIPTION

Stainless steel selections are defined by three basic parameters that are key to product specification:

MATERIAL	FINISH	PATTERN	TREATMENT
Choose a metal; in this case, stainless steel.	A variety of distinctive finishes are available including standard and High-Durability options. Please see page two for available finish options.	The pattern will be applied to the metal/finish combination you have selected. Standard Impression, Eco-Etch, and Fusion patterns are shown on pages three through eight. Custom patterns can also be requested.	CeramiLoc treatment is an invisible, protective treatment that significantly increases the fingerprint resistance and maintenance ease of stainless steel. CeramiLoc is available with any finish and pattern that does not incorporate Mirror finish.

## PRODUCTS & APPLICATIONS

SHEET GOODS	LEVELe® WALL SYSTEMS & ELEVATOR INTERIORS	RAILING INFILL PANELS	ARCHITECTURAL ACCENTS
<ul style="list-style-type: none"> <li>Includes our full line of stainless steel materials in standard sheet sizes or sheared to your specifications. Standard sheet sizes are 48" x 96" (1219 mm x 2438 mm) and 48" x 120" (1219 mm x 3048 mm) with standard sheet thicknesses of 0.8 mm and 1.5 mm, with the exception of the High-Durability finishes which are not available in 48" x 96" at the 1.5 mm thickness.</li> <li>Edge returns and many other add-on features are available.</li> </ul>	<ul style="list-style-type: none"> <li>Stainless steel is available as standard inset panel options in LEVELe Wall Cladding System &amp; LEVELe Elevator Interiors.</li> <li>For LEVELe Wall Systems, stainless steel can be used with Minimal, Capture, Float and Blind panel types.</li> </ul>	<ul style="list-style-type: none"> <li>Stainless steel can be used as an infill option in railings. Please contact us for additional information on how to incorporate into your application.</li> </ul>	<ul style="list-style-type: none"> <li>Trim, wainscoting, counter facings and more.</li> </ul>
DOORS	CABFORMS® ELEVATOR INTERIORS	ELEVATOR DOOR SKINS	COLUMN COVERS
<ul style="list-style-type: none"> <li>Stainless steel door options include Eco-Etch, Impression, Stile &amp; Rail and System 7 Doors. Many models are available with a full range of UL® fire labeling options.</li> </ul>	<ul style="list-style-type: none"> <li>Stainless steel is available as facing material for our Series 1000 Elevator Interiors and as standard inset panel options or as cladding on stiles and rails in our Series 2000 CabForms Elevator Interiors.</li> </ul>	<ul style="list-style-type: none"> <li>Stainless steel may be specified as durable and highly attractive skins for elevator doors or hoistway doors.</li> </ul>	<ul style="list-style-type: none"> <li>For round, square or irregularly shaped columns.</li> </ul>

## MAINTENANCE & FIRE RATING

MAINTENANCE	FIRE RATING
Fingerprints and smudges can be removed using a non-chlorinated spray cleaner/degreaser such as Simple Green® and a microfiber cloth. Do not use harsh abrasives, acids or chlorine-based cleaners or cleaning tools containing carbon steel, such as steel wool or wire brushes.	Stainless Steel is inherently non-combustible and generally considered to be NFPA and IBC Class A fire rated and UBC Class 1 fire rated.

## ENVIRONMENTAL CONSIDERATIONS

Please refer to the Stainless Steel Product Environmental Data Sheet for detailed environmental impact information.

## HOW TO SPECIFY

To order please indicate finish, pattern and quantity.

T 1.800.451.0410 | F 412.781.7840 | [www.forms-surfaces.com](http://www.forms-surfaces.com)

**FORMS+SURFACES®**

© 2018 Forms+Surfaces® | All dimensions are nominal. Specifications and pricing subject to change without notice. For the most current version of this document, please refer to our website at [www.forms-surfaces.com](http://www.forms-surfaces.com).



# STAINLESS STEEL

PRODUCT DATA

## FINISH OPTIONS

Stainless steel is available in a variety of distinctive finishes including standard and High-Durability options. High-Durability finishes—designated by the “HD” logo below—are manufactured in a process that creates a work-hardened surface with enhanced resistance to abrasion and wear.



SANDSTONE™



SEASTONE™



LINEN™



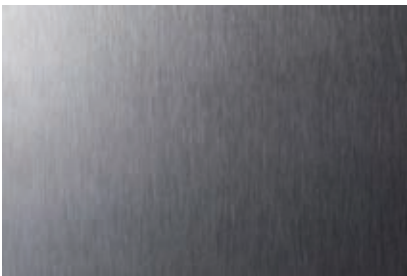
DIAMOND™



MIST™



MIRROR



SATIN

*Note: Because different computers will render colors and textures differently, actual finishes may vary from those shown.*

T 1.800.451.0410 | F 412.781.7840 | [www.forms-surfaces.com](http://www.forms-surfaces.com)

**FORMS+SURFACES®**

© 2018 Forms+Surfaces® | All dimensions are nominal. Specifications and pricing subject to change without notice. For the most current version of this document, please refer to our website at [www.forms-surfaces.com](http://www.forms-surfaces.com).



# STAINLESS STEEL

PRODUCT DATA

## PATTERN OPTIONS

Patterns are optional applied designs that add visual interest and expanded customization potential to stainless steel surfaces. From a functional standpoint, patterns pick up where metals and finishes leave off. Forms+Surfaces stainless steel patterns are grouped into four broad categories: Impression, Eco-Etch, Fusion and Screen.

### IMPRESSION™ PATTERN OPTIONS

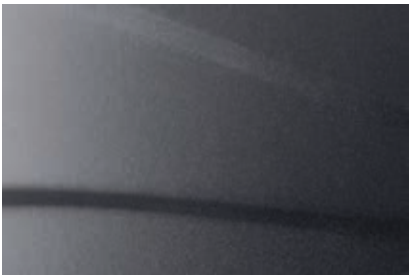
Forms+Surfaces proprietary manufacturing capabilities include large-scale stamping equipment that can apply unique, full-press patterns across an entire sheet of material using a single tool. The result is a series of beautiful, high-relief patterns that add visual impact, enhanced durability and a rich, tactile feel. Some Impression patterns are also available in other materials such as Fused Metal® and our exclusive Bonded Quartz and Bonded Metal®, making it easy to carry a design theme throughout an installation in a variety of materials.



CHAMPAGNE™

SHEET THICKNESS	.032" (0.8 mm)	
SHEET SIZES	48" x 96" (1219 mm x 2438 mm)	48" x 120" (1219 mm x 3048mm)
HEIGHT	0.147" (3.7 mm)	

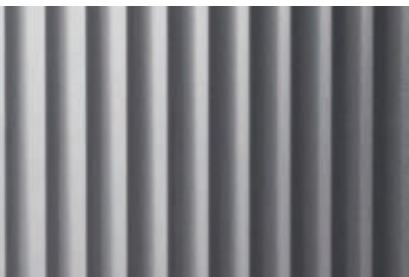
Scale Approximately: 1:1



CHARDONNAY™

SHEET THICKNESS	.032" (0.8 mm)	
SHEET SIZES	48" x 96" (1219 mm x 2438 mm)	48" x 120" (1219 mm x 3048mm)
HEIGHT	0.147" (3.7 mm)	

Scale Approximately: 1:1



DALLAS™

SHEET THICKNESS	.032" (0.8 mm)	
SHEET SIZES	48" x 96" (1219 mm x 2438 mm)	48" x 120" (1219 mm x 3048mm)
HEIGHT (H)	.0625" (1.6 mm)	

Scale Approximately: 1:1

**Note:** Pattern is available in horizontal or vertical orientation



# STAINLESS STEEL

PRODUCT DATA

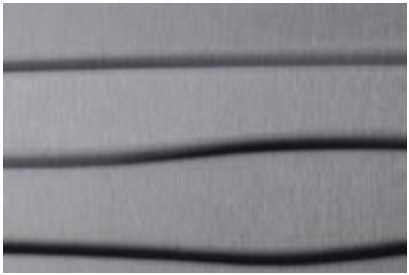


DENVER™

SHEET THICKNESS	.032" (0.8 mm)	
SHEET SIZES	48" x 96" (1219 mm x 2438 mm)	48" x 120" (1219 mm x 3048 mm)
HEIGHT (H)	.053" (1.3 mm)	

Scale Approximately: 1:1

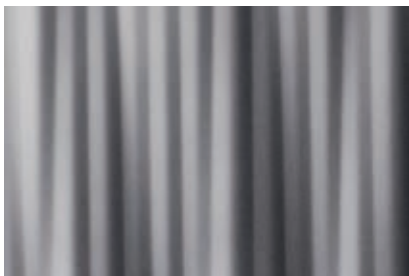
**Note:** Pattern is available in horizontal or vertical orientation



DUNE™

SHEET THICKNESS	.032" (0.8 mm)	
SHEET SIZES	48" x 96" (1219 mm x 2438 mm)	48" x 120" (1219 mm x 3048 mm)

Scale Approximately: 1:1



KALAHARI™

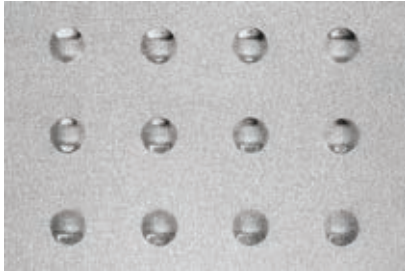
SHEET THICKNESS	.032" (0.8 mm)	
SHEET SIZES	48" x 96" (1219 mm x 2438 mm)	48" x 120" (1219 mm x 3048 mm)
HEIGHT	0.106" (2.7 mm)	

Scale Approximately: 1:1



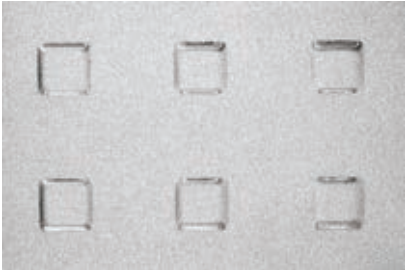
# STAINLESS STEEL

PRODUCT DATA



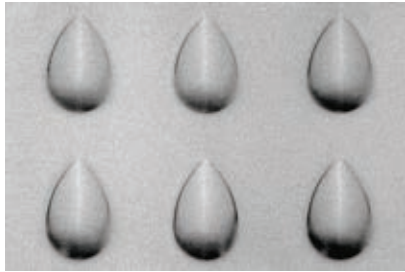
CIRCLE

AVAILABLE EMBOSSURE SIZES	.312" dia.	.375" dia.	.50" dia.	.75" dia.	1.0" dia.
MINIMUM VERTICAL AND HORIZONTAL SPACING	2" c.c.	2" c.c.	2" c.c.	2" c.c.	3" c.c.
HEIGHT (H)	.08" (2 mm)				
AVAILABLE SHEET THICKNESSES	.032" (0.8 mm)		.063" (1.5 mm)		
AVAILABLE SHEET SIZES	48" x 96" (1219 mm x 2438 mm)		48" x 120" (1219 mm x 3048 mm)		



SQUARE

AVAILABLE EMBOSSURE SIZES	.375" squ.	.50" squ.	.625" squ.	1" squ.	1.5" squ.
MINIMUM VERTICAL AND HORIZONTAL SPACING	2" c.c.	2" c.c.	2" c.c.	3" c.c.	4" c.c.
HEIGHT (H)	.06" (1.5 mm)				
AVAILABLE SHEET THICKNESSES	.032" (0.8 mm)		.063" (1.5 mm)		
AVAILABLE SHEET SIZES	48" x 96" (1219 mm x 2438 mm)		48" x 120" (1219 mm x 3048 mm)		



TEARDROP™

EMBOSSURE SIZE	MINIMUM VERTICAL SPACING	MINIMUM HORIZONTAL SPACING	HEIGHT (H)
.88" x 1.4"	3" c.c.	3" c.c.	.134" (3.4 mm)
AVAILABLE SHEET THICKNESSES	.032" (0.8 mm)		.063" (1.5 mm)
AVAILABLE SHEET SIZES	48" x 96" (1219 mm x 2438 mm)		48" x 120" (1219 mm x 3048 mm)



TECH™

EMBOSSURE SIZE	MINIMUM VERTICAL SPACING	MINIMUM HORIZONTAL SPACING	HEIGHT (H)
.25" x 1"	1.5" c.c.	1" c.c.	.075" (1.9 mm)
AVAILABLE SHEET THICKNESSES	.032" (0.8 mm)		.063" (1.5 mm)
AVAILABLE SHEET SIZES	48" x 96" (1219 mm x 2438 mm)		48" x 120" (1219 mm x 3048 mm)



# STAINLESS STEEL

PRODUCT DATA

## ECO-ETCH®

Beautiful etched designs are applied to stainless steel using an advanced photolithographic bead-blasting system instead of acids or other harmful chemicals. Advantages of the Eco-Etch process include:

SIZE	SPEED	CONSISTENCY	ECOLOGICALLY RESPONSIBLE
The largest physical etching system in North America, our equipment can handle materials up to two meters wide by six meters long. Standard sheet sizes of 48" x 96" and 48" x 120" and standard sheet thicknesses of 0.8 mm and 1.5 mm are available.	The physical etching process can be completed in a fraction of the time required for traditional chemical etching.	Our proprietary computer-controlled system ensures an even blast pressure and a consistent finish, even on the largest surfaces.	Because our Eco-Etch is physically applied, it does not require etching acid or other harmful chemicals and no toxic waste is generated. The beads used in the process are contained within a closed chamber; used beads are recycled and returned to the process for reuse.

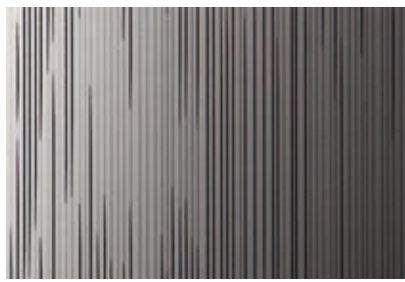
## STANDARD AND CUSTOM ECO-ETCH PATTERNS

Standard designs include both overall and full-sheet patterns. Eco-Etch Doors and Elevator Door Skins also come in their own range of patterns optimized for door face applications. Please note that our standard patterns are only starting points; the flexibility and speed of our Eco-Etch system allow a wealth of design options with artwork supplied by the specifier or developed by Forms+Surfaces.

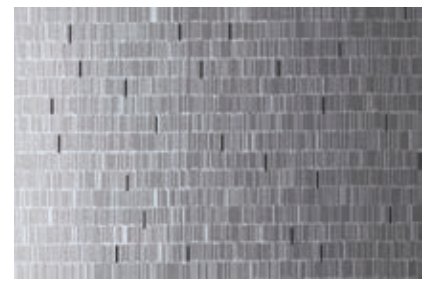
### STANDARD ECO-ETCH PATTERNS



CITY LIGHTS™



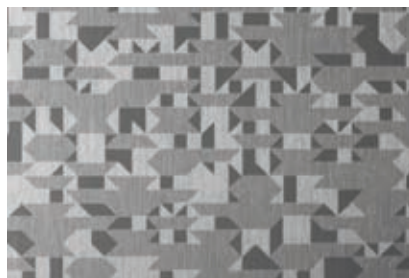
CURRENT™



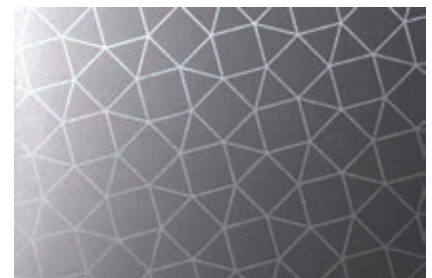
DASH™



FLICKER™



GLACIER™



MICA™



# STAINLESS STEEL

PRODUCT DATA

## STANDARD ECO-ETCH PATTERNS cont.



REEDS™



SEAGRASS™



SEQUENCE™



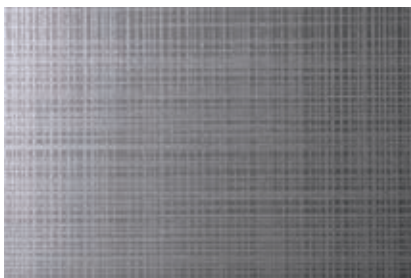
SILKWORM™



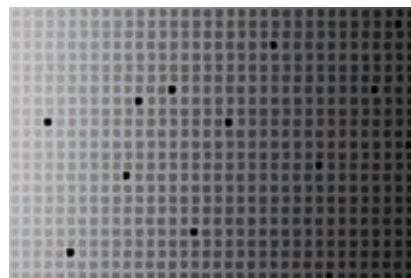
STACKS™



STRIPE™



THATCH™



TRACE™

*Usage rights, permissions, and/or copyrights for all submitted artwork are the responsibility of the submitting party. Forms+Surfaces is not responsible for obtaining or verifying these rights or permissions and cannot be held liable for conflicts of rights tied to submitted artwork.*

T 1.800.451.0410 | F 412.781.7840 | [www.forms-surfaces.com](http://www.forms-surfaces.com)

**FORMS+SURFACES®**

© 2018 Forms+Surfaces® | All dimensions are nominal. Specifications and pricing subject to change without notice. For the most current version of this document, please refer to our website at [www.forms-surfaces.com](http://www.forms-surfaces.com).



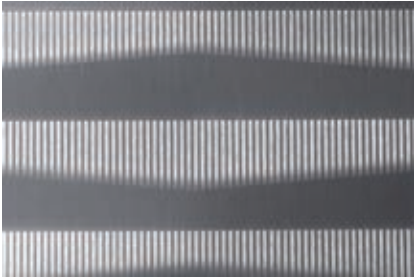


# STAINLESS STEEL

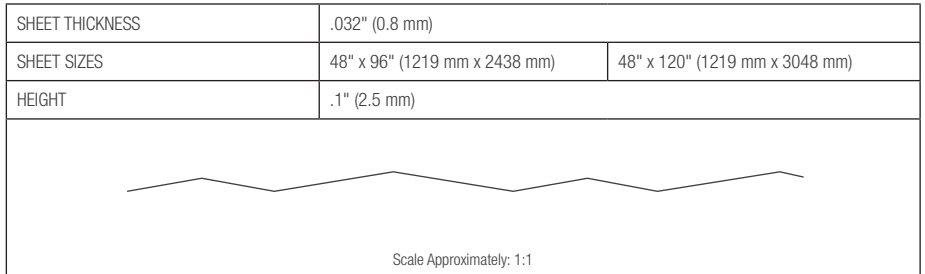
PRODUCT DATA

## FUSION™

Fusion is a collection of surfaces created by the Forms+Surfaces Design Studio. As the name implies, each design is created by combining two or more pattern types, including Impression, Eco-Etch and Screen, to create a unique and visually intriguing surface.



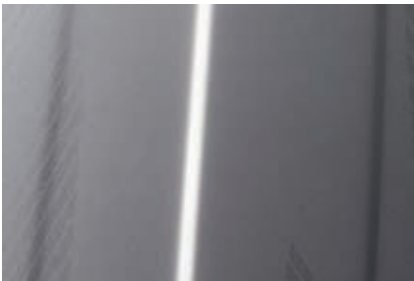
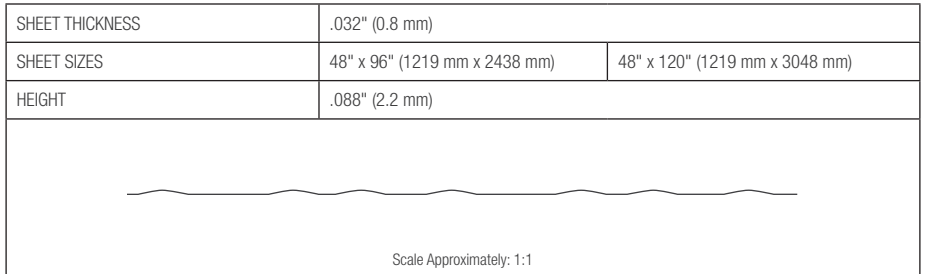
CARBON™



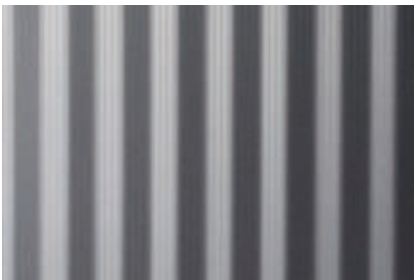
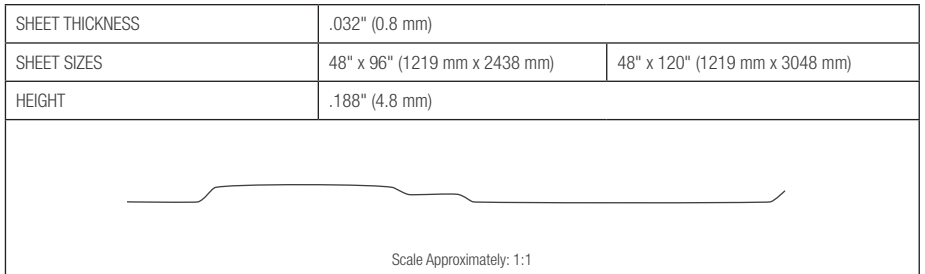
**Note:** Pattern is available in horizontal or vertical orientation



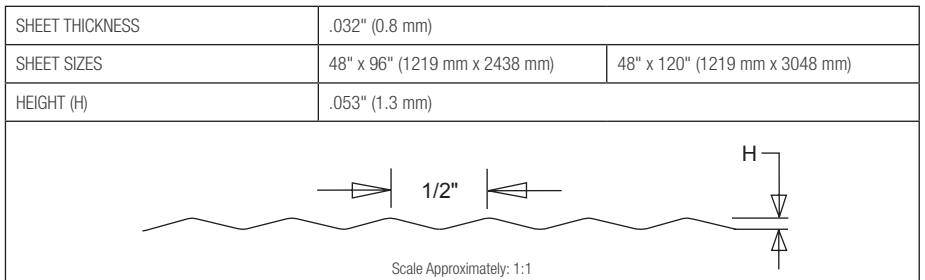
CINCH™



MESA™



MORAINÉ™



**Note:** Pattern is available in horizontal or vertical orientation

