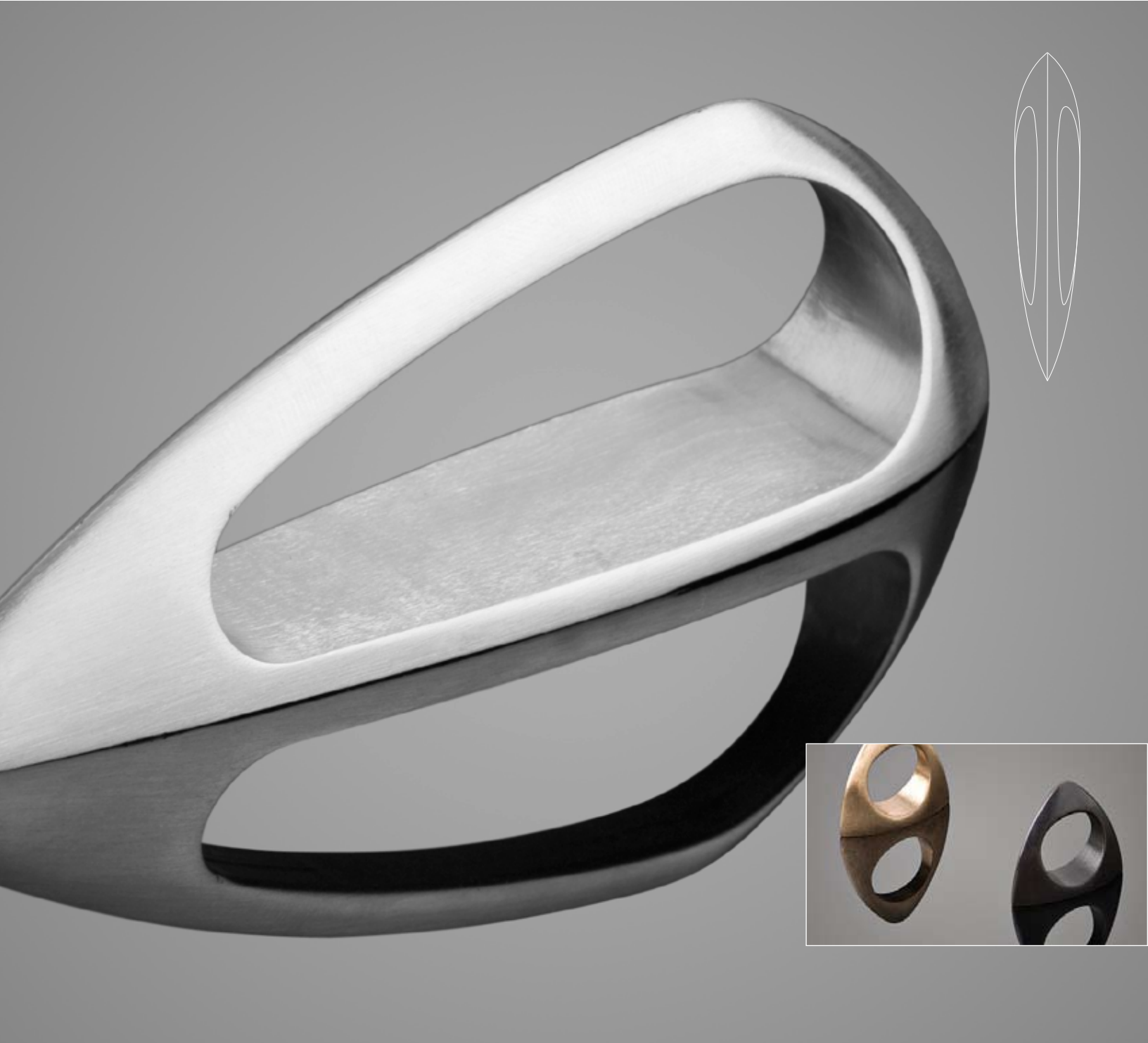




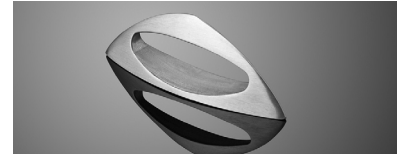
**LUNA™** CABINET PULLS

PRODUCT DATA





# LUNA™ CABINET PULLS



PRODUCT DATA

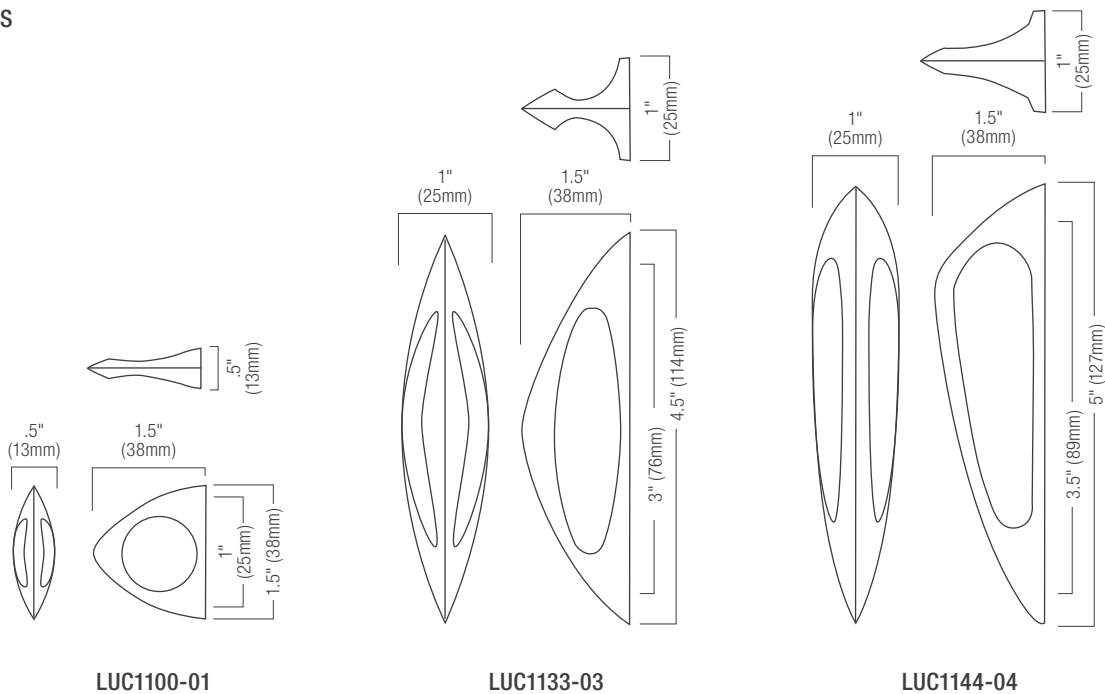
Reminiscent of modernist design, Luna Cabinet Pulls capture the elegance and style of the 1940s and '50s. Shapes are sleek and streamlined and look toward the future. A striking combination of metals and finishes complement the sculptural forms and add a lustrous dimension to each pull.

## MATERIALS & FINISHES

## INSTALLATION & MAINTENANCE

STAINLESS STEEL		BRONZE		INSTALLATION	MAINTENANCE
US32	Polished Stainless Steel	US9	Polished Bronze	Luna Cabinet Pulls are designed to be used with 3/4" (19mm) thick cabinet doors or drawers and are installed using 8-32 x 1" long screws (included with order).	Luna Cabinet Pulls are well-suited for interior or exterior use. Regular maintenance will help ensure the lasting beauty of each pull. For more information, please refer to <i>Door Hardware Care &amp; Maintenance</i> found on our website.
US32D	Satin Stainless Steel	US10	Satin Bronze		
		US10B	Oil-Rubbed Bronze		

## DESIGN OPTIONS



## LIST PRICING AND ORDERING INFORMATION

Pricing does not include freight. All pricing is for single units, not pairs.

MODEL	STAINLESS STEEL	BRONZE
LUC1100-01 1" (25mm) c.c.	US32, US32D \$25	US9, US10, US10B \$37
LUC1133-03 3" (76mm) c.c.	US32, US32D \$30	US9, US10, US10B \$45
LUC1144-04 3.5" (89mm) c.c.	US32, US32D \$30	US9, US10, US10B \$45

## HOW TO SPECIFY:

Provide cabinet pull model number, quantity, metal and finish.

