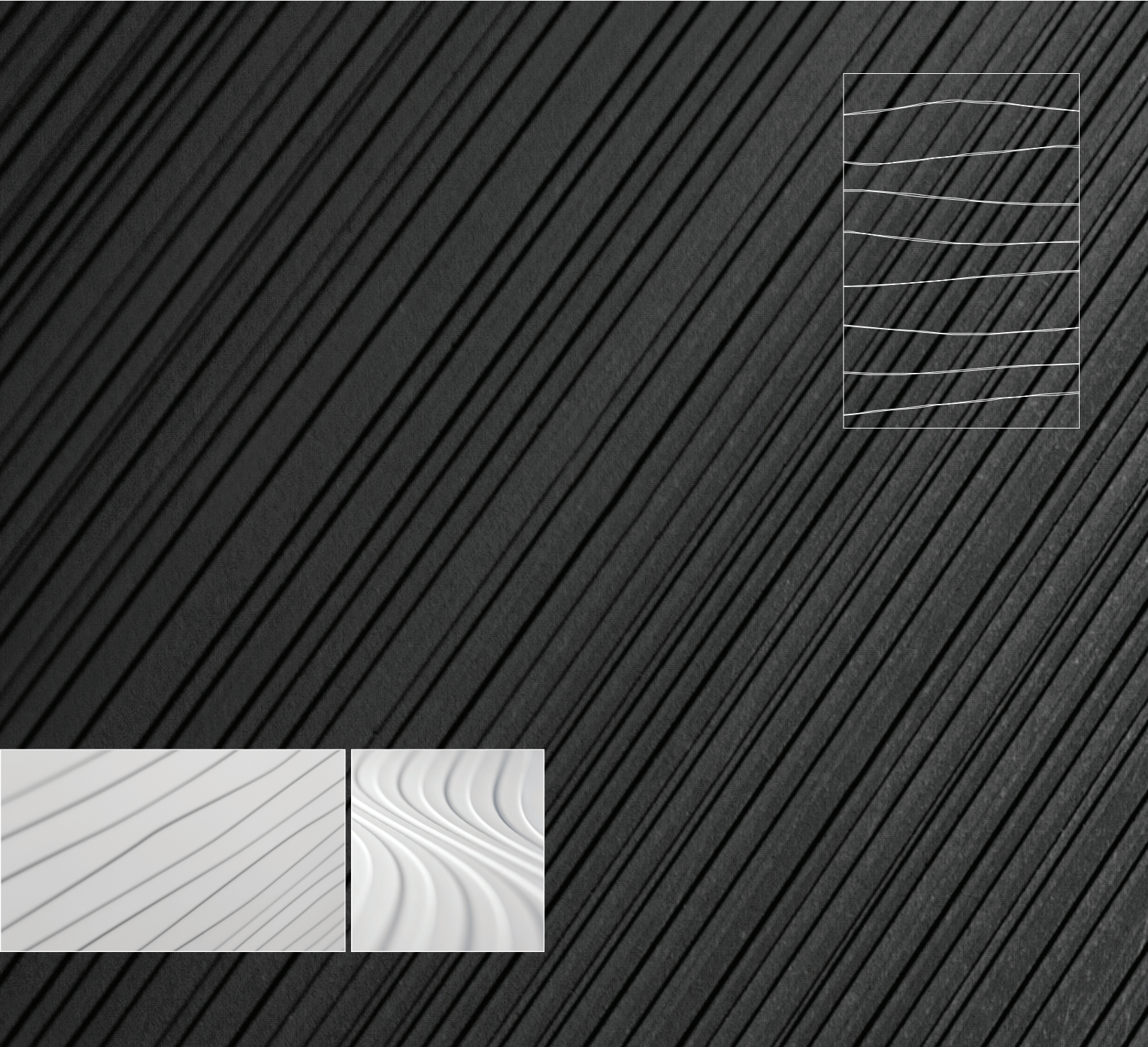




**BONDED QUARTZ™**

PRODUCT DATA





# BONDED QUARTZ™

PRODUCT DATA

Unlike anything else on the market, **Bonded Quartz** combines ceramic microspheres and a fiber-reinforced polymer matrix to create a material that is lightweight, durable, and easy to clean. The standard colors for Bonded Quartz are Bonded White™ and Bonded Charcoal™. For larger projects, custom colors are also available.

## PATTERN OPTIONS

Any of the standard patterns shown on pages two through four can be specified. For larger projects, Forms+Surfaces welcomes inquiries regarding custom designs and applications for this highly sculptural material.

## PRODUCTS & APPLICATIONS

STANDARD & BACKED CASTINGS	F+S Systems
<ul style="list-style-type: none"> <li>• Castings can be laminated to wood (plywood or particleboard) or metal surfaces. Application directly to drywall is not recommended.</li> <li>• Castings can be factory-laminated to a backer, suitable for application to interior walls. Standard backer options are 1/4" (6 mm), 1/2" (13 mm) or 3/4" (19 mm) fire-rated particleboard, or 6, 8 or 10 mm polycarbonate.</li> <li>• Bonded Quartz is ideal wainscoting, counter facings, architectural accents and more.</li> </ul>	<ul style="list-style-type: none"> <li>• LEVELr Wall Cladding System</li> <li>• LEVELr Column System</li> <li>• LEVELe Wall Cladding System</li> <li>• LEVELe Elevator Interiors</li> <li>• LEVELe Column System</li> <li>• LEVELc Elevator Interiors</li> </ul>

## CONSTRUCTION DETAILS

INSTALLATION	LIMITATIONS
Castings are typically installed using contact cement or construction adhesive. Backed castings provide a greater range of installation options using either adhesives or fasteners. General installation instructions are available.	Bonded Quartz is intended to be an attractive and durable cladding material and should not be used as a structural element nor should it be used to provide reinforcing or bracing for structural members. Forms+Surfaces recommends either a minimum 1/8" (3 mm) reveal or a trim detail between sheets. Exposed edges of casting should be protected by trim or other material.

## MAINTENANCE & FIRE RATING

MAINTENANCE	FIRE RATING
<ul style="list-style-type: none"> <li>• Fingerprints, smudges and more persistent dirt can be removed using an ammonia-free cleaner/degreaser such as Simple Green®.</li> </ul>	<ul style="list-style-type: none"> <li>• Bonded Quartz is NFPA and IBC class B fire rated and UBC class 2 fire rated.</li> </ul>

## ENVIRONMENTAL CONSIDERATIONS

Please refer to the Bonded Quartz Product Environmental Data Sheet for detailed environmental impact information.

## HOW TO SPECIFY

To order please indicate quantity, pattern and color.





# BONDED QUARTZ™

PRODUCT DATA

## AVAILABLE PATTERNS - BONDED WHITE



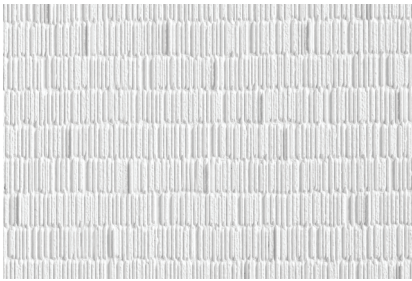
CARBON™



CRINKLE™



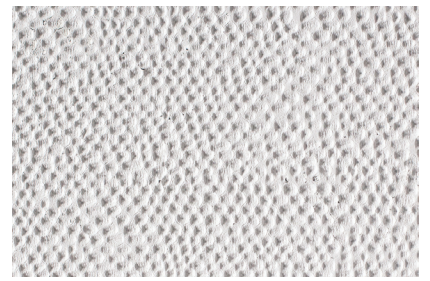
CURRENT™



DASH™



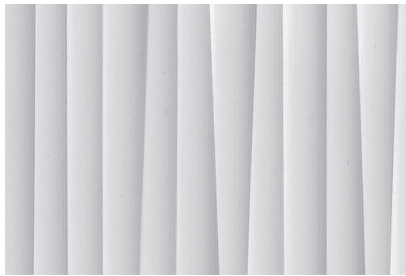
DUNE™



GLINT™



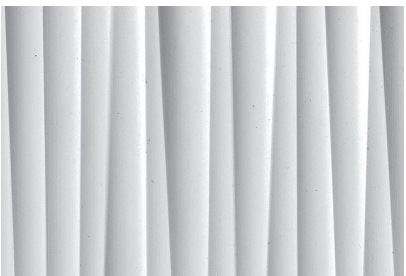
GRASS™



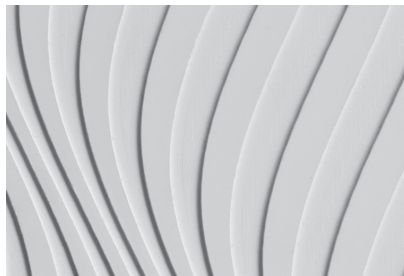
KALAHARI™



LOFT™



MARA™



SAHARA™



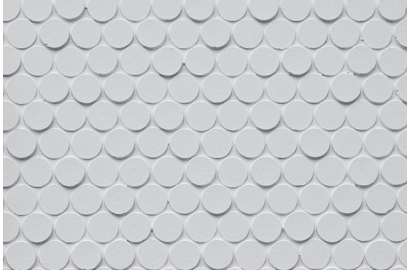
TILT™



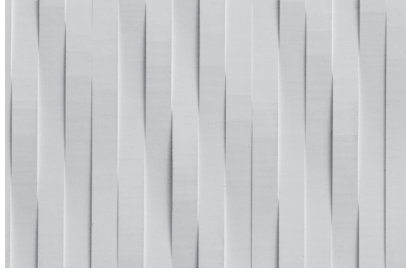
# BONDED QUARTZ™

PRODUCT DATA

## AVAILABLE PATTERNS - BONDED WHITE



TREVIA™



WATERFALL™

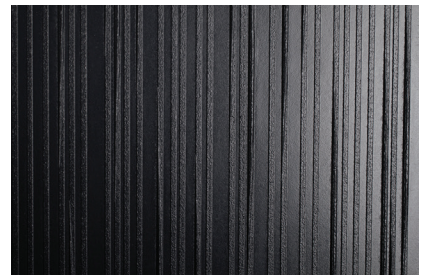
## AVAILABLE PATTERNS - BONDED CHARCOAL



CARBON™



CRINKLE™



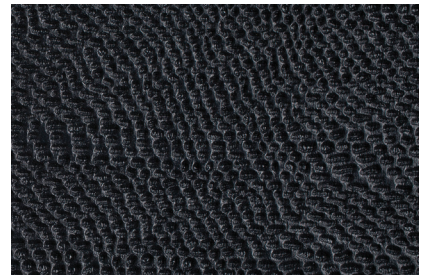
CURRENT™



DASH™



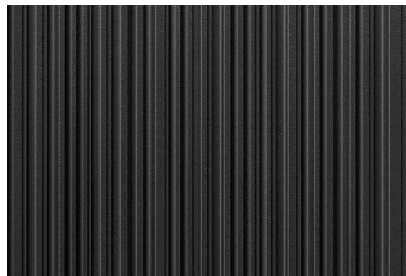
DUNE™



GLINT™



GRASS™



LOFT™

*Note: Because different computers will render colors and textures differently, actual finishes may vary from those shown.*

T 1.800.451.0410 | F 412.781.7840 | [www.forms-surfaces.com](http://www.forms-surfaces.com)

**FORMS+SURFACES®**

© 2020 Forms+Surfaces® | All dimensions are nominal. Specifications and pricing subject to change without notice. For the most current version of this document, please refer to our website at [www.forms-surfaces.com](http://www.forms-surfaces.com).



# BONDED QUARTZ™

PRODUCT DATA

## MATERIAL SPECIFICATIONS

The chart below shows thickness and sheet size dimensions for all Bonded Quartz castings. For backed castings, simply add your preferred backer thickness to the casting thickness shown. The face layer of the cast matrix that makes up Bonded Quartz ranges from 0.018-0.035". Castings may be specified in any sheet size up to the maximum indicated in the chart.

PATTERN	COLOR	THICKNESS	SHEET SIZE
CARBON (HORIZONTAL)	BONDED WHITE & BONDED CHARCOAL	0.153" (3.9 mm)	47.75" x 119.75" (1213 x 3042 mm)
CARBON (VERTICAL)	BONDED WHITE & BONDED CHARCOAL	0.153" (3.9 mm)	47.75" x 119.75" (1213 x 3042 mm)
CRINKLE	BONDED WHITE & BONDED CHARCOAL	0.158" (4.0 mm)	48" x 120" (1219 x 3048 mm)
CURRENT	BONDED WHITE & BONDED CHARCOAL	0.132" (3.4 mm)	47.5" x 119.5" (1207 x 3035 mm)
DASH	BONDED WHITE & BONDED CHARCOAL	0.132" (3.4 mm)	47.5" x 119.5" (1207 x 3035 mm)
DUNE	BONDED WHITE & BONDED CHARCOAL	0.147" (3.7 mm)	48" x 120" (1219 x 3048 mm)
GLINT	BONDED WHITE & BONDED CHARCOAL	0.132" (3.4 mm)	47.5" x 119.5" (1207 x 3035 mm)
GRASS	BONDED WHITE & BONDED CHARCOAL	0.135" (3.4 mm)	48" x 120" (1219 x 3048 mm)
KALAHARI (HORIZONTAL)	BONDED WHITE	0.200" (5.1 mm)	48" x 120" (1219 x 3048 mm)
KALAHARI (VERTICAL)	BONDED WHITE	0.200" (5.1 mm)	48" x 120" (1219 x 3048 mm)
LOFT	BONDED WHITE & BONDED CHARCOAL	0.105" (2.7 mm)	48" x 120" (1219 x 3048 mm)
MARA (HORIZONTAL)	BONDED WHITE	0.200" (5.1 mm)	48" x 120" (1219 x 3048 mm)
MARA (VERTICAL)	BONDED WHITE	0.200" (5.1 mm)	48" x 120" (1219 x 3048 mm)
TREVIA	BONDED WHITE	0.120" (3.0 mm)	48" x 120" (1219 x 3048 mm)
WATERFALL	BONDED WHITE	0.130" (3.3 mm)	48" x 120" (1219 x 3048 mm)