



**DASH™ BENCH** →

PRODUCT DATA





# DASH™ BENCH

PRODUCT DATA

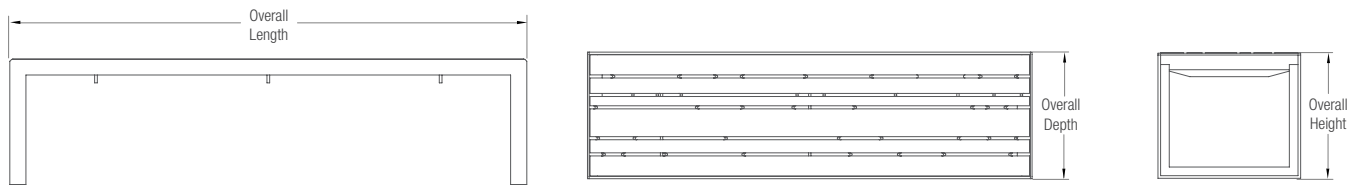
The **Dash Bench** pairs a seat cast of TENSU Ultra High Performance Concrete (UHPC) with a frame of powdercoated aluminum. Slotted perforations in the seat add visual interest and allow water and light to pass through.

## MATERIAL & CONSTRUCTION DETAILS

## INSTALLATION & MAINTENANCE

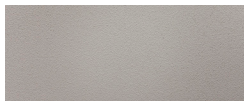
| SEAT  | FRAME  | INSTALLATION  | MAINTENANCE   |
|---|--|---|---|
| <ul style="list-style-type: none"> <li>Bench seat is made of TENSU UHPC with an intrinsic UHPC finish in Natural color.</li> <li>TENSU surfaces are protected by an invisible hydrophobic treatment.</li> <li>Slight variations in color and surface texture can occur due to the nature of the TENSU manufacturing process.</li> </ul> | <ul style="list-style-type: none"> <li>Bench frame is made of aluminum with a powdercoat finish.</li> <li>See the Forms+Surfaces Powdercoat Chart for details. Custom RAL colors are available for an upcharge.</li> </ul> | <ul style="list-style-type: none"> <li>Dash Benches can be free-standing or surface mounted.</li> <li>Stainless steel mounting hardware sold separately.</li> </ul> | <ul style="list-style-type: none"> <li>TENSU surfaces can be cleaned as needed using a soft cloth or brush with water and a mild detergent. Surfaces should be thoroughly rinsed and allowed to dry.</li> <li>Avoid abrasive cleaners.</li> </ul> |

## NOMINAL DIMENSIONS



| MODEL     | OVERALL LENGTH | OVERALL DEPTH  | OVERALL HEIGHT | WEIGHT          |
|-----------|----------------|----------------|----------------|-----------------|
| SBDSH-72C | 72" (1829 mm)  | 20.5" (521 mm) | 18" (457 mm)   | 172 lbs (78 kg) |

## UHPC COLOR: NATURAL



## ENVIRONMENTAL CONSIDERATIONS

- Please refer to the Dash Bench Environmental Data Sheet for detailed environmental impact information.
- Dash Benches are composed primarily of natural materials local to manufacturing.
- All Dash Benches use a low energy, resource efficient manufacturing and curing process.
- All bench components disassemble at end of life and are fully recyclable.
- Low maintenance and extremely long service life.
- Powdercoat finishes are no- or low-VOC, depending on color.
- Manufactured in the USA.

## MODEL NUMBER AND DESCRIPTION

| MODEL     | DESCRIPTION                              |
|-----------|--|
| SBDSH-72C | Dash Bench, 6 foot, backless, TENSU UHPC |



## DASH™ BENCH

PRODUCT DATA

### PRODUCT OPTIONS

The following options are available for an upcharge

|                                   |                             |
|-----------------------------------|-----------------------------|
| Stainless steel mounting hardware | Custom RAL powdercoat color |
|-----------------------------------|-----------------------------|

**LEAD TIME:** Please contact us to discuss your specific timing requirements.

**PRICING:** Please contact us at **800.451.0410** or **sales@forms-surfaces.com**. At Forms+Surfaces, we design, manufacture and sell our products directly to you. Our sales team is available to assist you with questions about our products, requests for quotes, and orders. Territory Managers are located worldwide to assist with the front-end specification and quoting process, and our in-house Project Sales Coordinators follow your project through from the time you place an order to shipment.

**TO ORDER SPECIFY:** Quantity, model, powdercoat color for frame, and freestanding or surface mount. Quote/Order Forms are available on our website to lead you through the specification process in a simple checkbox format.

**NOTE:** Because different computers, monitors, and printers render colors and textures differently, actual finishes may vary from those shown here.