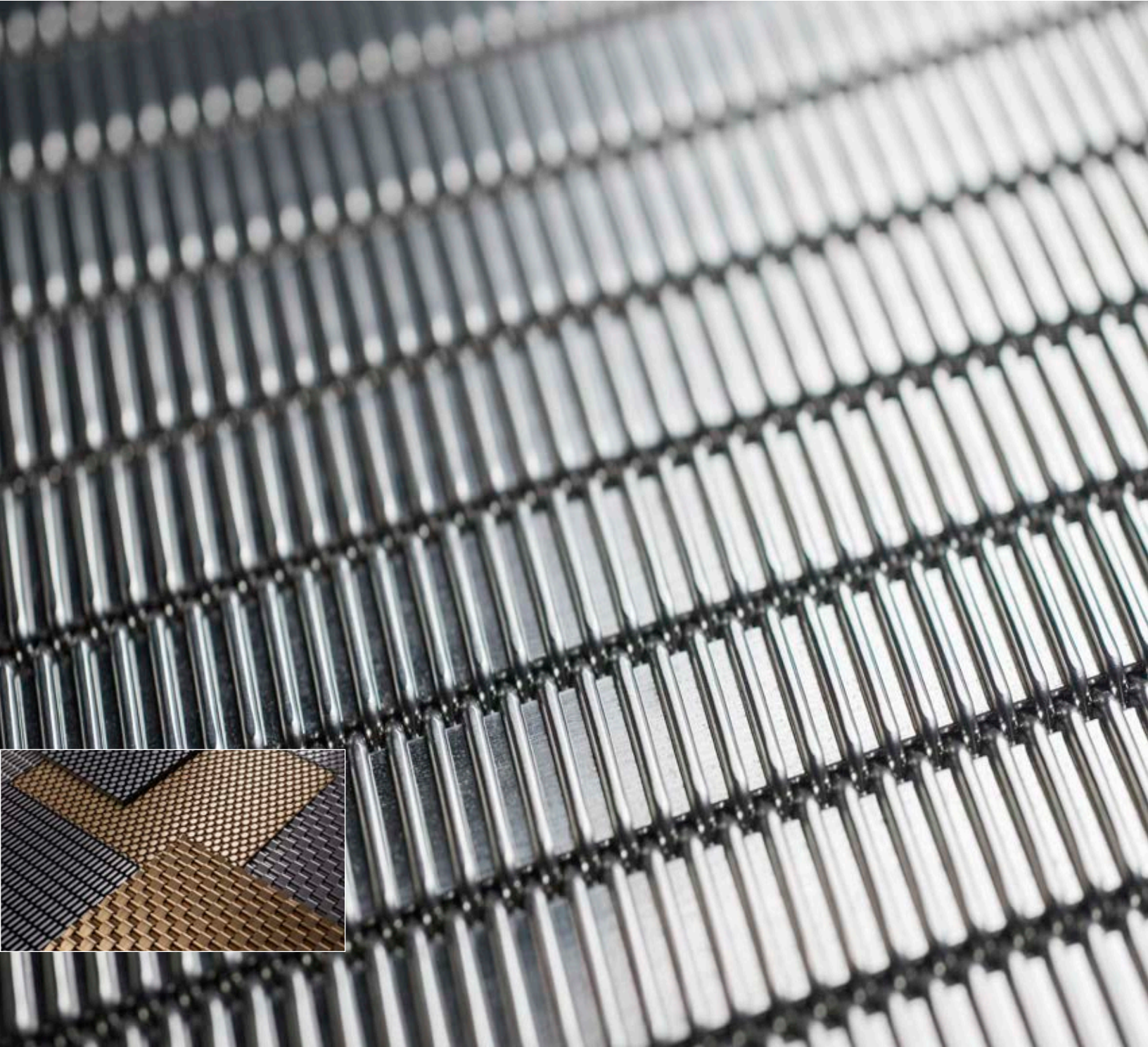




LINQ™ WOVEN METAL

PRODUCT DATA





LINQ™ WOVEN METAL

PRODUCT DATA

Linq Woven Metal brings a distinctly F+S twist to woven metal. Shaped by innovative design and material capabilities exclusive to Forms+Surfaces, Linq unites modern aesthetics, exceptional durability, and full integration with our wall systems, columns, elevator interiors and more.

CrossLinq Woven Metal patterns consist of flat and/or round wires interwoven to create distinctive textures and designs. CrossLinq patterns emphasize stainless steel, though brass is available for select patterns on a per-project basis.

MATERIAL DESCRIPTION

Linq Woven Metal selections are defined by three basic parameters:

MATERIAL	PATTERN	PATINA
The metal wire used. All patterns are available in Stainless Steel. Select patterns are available in Brass, as indicated on pages 2 and 3.	The distinctive texture or design created by weaving the metal. The 6 standard CrossLinq patterns are shown in Stainless Steel on pages 2 and 3.	A contrast-enhancing surface treatment applied to the woven metal. Select patterns are available with a patina, as indicated on pages 2 and 3.

PRODUCTS & APPLICATIONS

LEVELe ELEVATOR INTERIORS	LEVELe WALL SYSTEM & COLUMN SYSTEM
All Linq Woven Metal patterns are available as standard inset panel options in LEVELe Elevator Interiors with Capture panel frames. Some patterns may require a backing material for use in elevator interiors.	For LEVELe Wall System or Column System, Linq Woven Metal can be used with Capture panel frames. Some patterns may require a backing material for use in a wall or column system.
CABFORMS ELEVATOR INTERIORS	ARCHITECTURAL ACCENTS
All Linq Woven Metal patterns are available as standard inset panel options in our Series 2000 CabForms Elevator Interiors. Some patterns may require a backing material for use in elevator interiors.	For architectural accents such as railing infills, partitions, artwork or other desired custom applications, please contact our team with details on your specific project.

MAINTENANCE & CONSTRUCTION DETAILS

MAINTENANCE	LIMITATIONS
For routine cleaning of Linq Woven Metal patterns in Stainless Steel, spray a commercial cleaner specifically formulated for stainless steel onto a clean microfiber cloth and wipe the surface. We recommend Weiman® Stainless Steel Spray or Magic Stainless Steel Cleaner. Fingerprints, smudges and more persistent dirt can be removed by using a solution of Simple Green and water, with a soft brush, as instructed on the Simple Green label. After cleaning, the surface should be rinsed with water to prevent streaking and dried with a clean microfiber towel.	Linq Woven Metal is intended to be an attractive and durable cladding material and should not be used as a structural element nor should it be used to provide reinforcing or bracing for structural members. Forms+Surfaces recommends either a minimum 1/8" (3 mm) reveal or a trim detail between sheets. Exposed edges of woven metal should be protected by trim or other material.

HOW TO SPECIFY

To order, please indicate material, pattern, patina and quantity.



CROSSLINQ PATTERNS

CrossLinQ patterns consist of flat and/or round wires interwoven to create distinctive, rigid textures and designs.

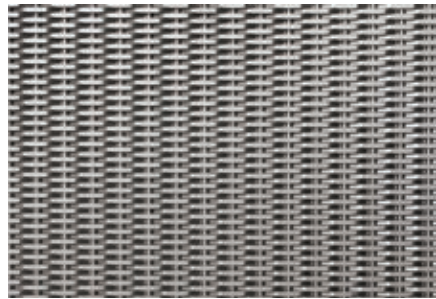


ECHO™

SHEET THICKNESS (APPROXIMATE)	0.176" (4.5 mm)
MAXIMUM SHEET SIZE	48" x 120" (1219 mm X 3048 mm)
WEIGHT (LBS/SQ FOOT)	3.837
PERCENT OPEN AREA	1%
AVAILABLE METALS	Stainless Steel
AVAILABLE WITH PATINA	No



Scale Approximately: 1:1

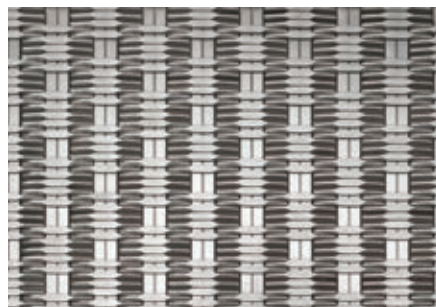


MERGE™

SHEET THICKNESS (APPROXIMATE)	0.189" (4.8 mm)
MAXIMUM SHEET SIZE	48" x 120" (1219 mm X 3048 mm)
WEIGHT (LBS/SQ FOOT)	3.080
PERCENT OPEN AREA	2%
AVAILABLE METALS	Stainless Steel or Brass
AVAILABLE WITH PATINA	Yes (Stainless Steel Only)



Scale Approximately: 1:1



RHYTHM™

SHEET THICKNESS (APPROXIMATE)	0.103" (2.6 mm)
MAXIMUM SHEET SIZE	48" x 120" (1219 mm X 3048 mm)
WEIGHT (LBS/SQ FOOT)	2.499
PERCENT OPEN AREA	8%
AVAILABLE METALS	Stainless Steel
AVAILABLE WITH PATINA	No




Scale Approximately: 1:1

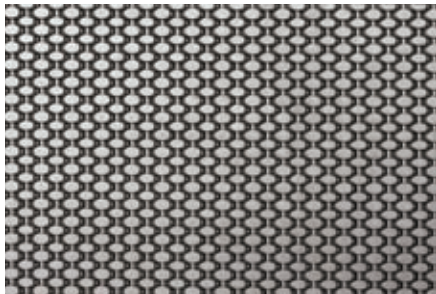


SLOPE™

SHEET THICKNESS (APPROXIMATE)	0.189" (4.8 mm)
MAXIMUM SHEET SIZE	60" x 120" (1524 mm X 3048 mm)
WEIGHT (LBS/SQ FOOT)	2.939
PERCENT OPEN AREA	6%
AVAILABLE METALS	Stainless Steel
AVAILABLE WITH PATINA	No



Scale Approximately: 1:1



SUM™

SHEET THICKNESS (APPROXIMATE)	0.133" (3.4 mm)
MAXIMUM SHEET SIZE	48" x 120" (1219 mm X 3048 mm)
WEIGHT (LBS/SQ FOOT)	3.738
PERCENT OPEN AREA	5%
AVAILABLE METALS	Stainless Steel or Brass
AVAILABLE WITH PATINA	Yes (Stainless Steel Only)




Scale Approximately: 1:1



WAVE™

SHEET THICKNESS (APPROXIMATE)	0.125" (3.2 mm)
MAXIMUM SHEET SIZE	60" x 120" (1524 mm X 3048 mm)
WEIGHT (LBS/SQ FOOT)	1.864
PERCENT OPEN AREA	5%
AVAILABLE METALS	Stainless Steel or Brass
AVAILABLE WITH PATINA	No



Scale Approximately: 1:1



MATERIAL SPECIFICATIONS

The chart below shows thickness and sheet size dimensions for all CrossLinq Woven Metal patterns. Woven Metal sheets may be specified in any sheet size up to the maximum indicated in the chart.

PATTERN	THICKNESS	SHEET SIZE
ECHO	0.176" (4.5 mm)	48" x 120" (1219 x 3048 mm)
MERGE	0.189" (4.8 mm)	48" x 120" (1219 x 3048 mm)
RHYTHM	0.103" (2.6 mm)	48" x 120" (1219 x 3048 mm)
SLOPE	0.189" (4.8 mm)	60" x 120" (1524 x 3048 mm)
SUM	0.133" (3.4 mm)	48" x 120" (1219 x 3048 mm)
WAVE	0.125" (3.2 mm)	60" x 120" (1524 x 3048 mm)