

PROJECT NAME: _____ DATE: _____

JOB LOCATION: _____ SPECIFIER: _____

PLEASE USE ADOBE READER OR ADOBE ACROBAT TO FILL OUT AND SAVE FORM. USING OTHER PROGRAMS COULD RESULT IN UNSAVED DATA.

APPLICATIONS

Forms+Surfaces Systems*

- Glass Doors
- LEVELc-2000N Elevator Interiors
- LightPlane Panels (View only)
- LEVELe Wall System
- LEVELe Elevator System

**If you select a Forms+Surfaces System, please skip the Installation Type, Project Details, Lite Descriptions and Glass Characteristics sections.*

Other Applications**

- Loose Lite(s)
- Other _____

***For Other Applications, please fill out all sections.*

INSTALLATION TYPE

- Butt Glazed
- Curtain Wall/IGU
- Mounted Solid Substrate
- Post Mounted with Holes
- Water Feature

PROJECT DETAILS

*Please choose **one** option from each category.*

Environment

- Interior, Standard Humidity
- Interior, High Humidity
- Exterior, Exposed Setting
- Exterior, Covered Setting

Lighting Conditions

- Natural
- Backlit
- Spotlight
- Other (please provide details): _____

Glass Thickness

- 5/16" (7.7 mm)
- 7/16" (11.1 mm)
- 9/16" (13.7 mm)

LITE DESCRIPTION

Description (include part number, if available)	Quantity	Size (width x height)
_____	_____	_____
_____	_____	_____
_____	_____	_____

GLASS CHARACTERISTICS

*Please choose **one** option from each category.*

Safety Standards

- Annealed
- Tempered*
- Heat Strengthened**

If Tempered or Heat Strengthened glass is selected, please provide reason:

Profile

- Flat
- Curved (please attach drawing)

**Tempering is required for load bearing holes and cutouts.*

***Heat strengthening is recommended for glass over 50 square feet.*

PROCESSING REQUIREMENTS

Please choose all options that apply and provide detail as needed; if yes, please attach drawing.

- Seamed Edges Yes No _____
- Flat Machine Polished Edges Yes No _____
- Notches Yes No _____
- Internal Cutouts Yes No _____
- Pattern Cuts Yes No _____
- ANSI Logo on glass* Yes No _____
- Holes Yes No _____

**ANSI Logo required for elevator interiors.*

DESIGN CHARACTERISTICS

Please choose **one** option from each category.

Finish

- Standard
- Pearlex*

Transparency

- Reflect
- View

LumiLevel

- LumiLevel #1 | VCV0611
- LumiLevel #2 | VCV0612
- LumiLevel #3 | VCV0613
- LumiLevel #4 | VCV0614
- LumiLevel #5 | VCV0615
- LumiLevel #6 | VCV0616

*Finish is available on one or two sides of double-sided View configurations. Please select one option below if you have a double-sided View configuration.

- One Side
- Two Sides

Graphic Interlayer Pattern Color

- Any Pantone, Sherwin Williams or Benjamin Moore color: _____

HARDWARE OPTIONS

Please choose all desired options and provide detail as needed.

Slot Mount Standoff

Finish

- Polished Brass
- Polished Chrome
- Satin Chrome
- Polished Gun Metal
- Satin Stainless Steel

Quantity: _____
Comments: _____

Edge Grip Standoff

Finish

- Polished Brass
- Polished Chrome
- Satin Chrome
- Polished Gun Metal
- Satin Stainless Steel

Quantity: _____
Comments: _____

Round Standoff

Standoff Base Length

- 1/4" (6.3 mm)
- 1/2" (12.7 mm)
- 3/4" (19.1 mm)
- 1" (25.4 mm)
- 1-1/2" (38.1 mm)
- 2" (50.8 mm)
- 4" (101.6 mm)
- 6" (152.4 mm)

Finish

- Polished Brass
- Polished Stainless Steel
- Satin Chrome
- Polished Gun Metal
- Satin Stainless Steel
- Polished Chrome

Quantity: _____
Comments: _____

Spider Fitting

Configuration

- 1-Arm
- 2-Arm
- 3-Arm
- 4-Arm

Finish

- Polished Stainless Steel
- Satin Stainless Steel

Quantity: _____
Comments: _____

Square Mall Clamp

Finish

- Polished Brass
- Polished Stainless Steel
- Satin Stainless Steel

Quantity: _____
Comments: _____

Tapered Rail

Finish

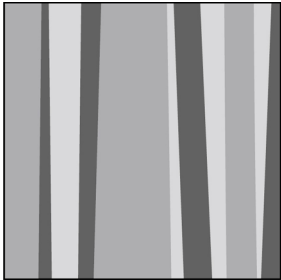
- Polished Brass
- Satin Stainless Steel
- Black Bronze Anodized
- Polished Stainless Steel
- Satin Anodized
- Black Powdercoat

Quantity: _____
Length: _____
Comments: _____

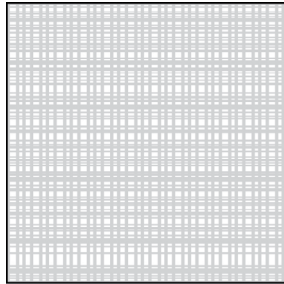
STANDARD GRAPHIC INTERLAYER PATTERNS

Please choose **one** pattern option below.

Cairo



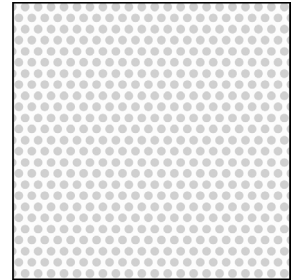
Centene



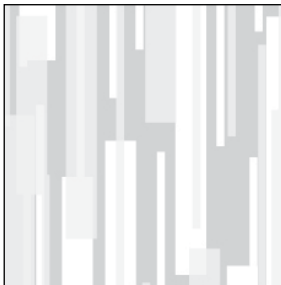
Current



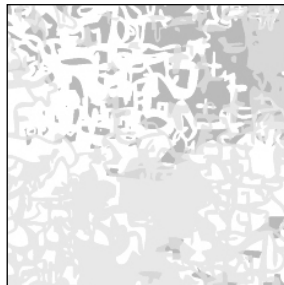
Dot Medium



Drift



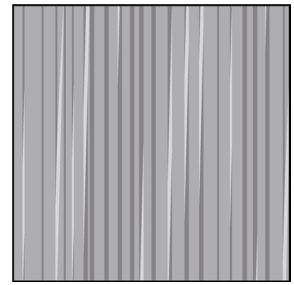
Frost



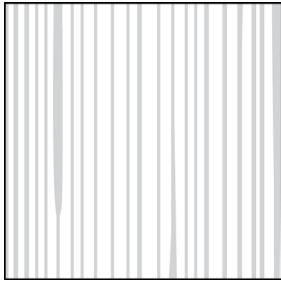
Glacier



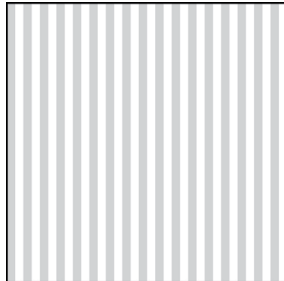
Seagrass



Silkworm



Vertical 116



Custom (please provide details)

Please send completed forms to sales@forms-surfaces.com or contact us at **800.451.0410** with any questions.

NOTES
