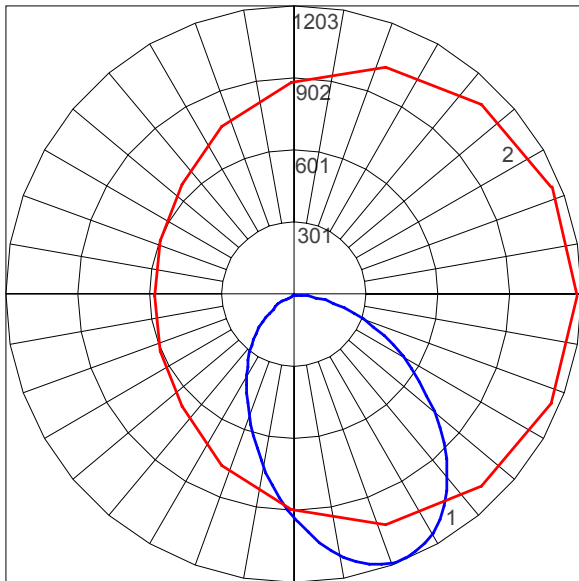




LAMP DESCRIPTIONS

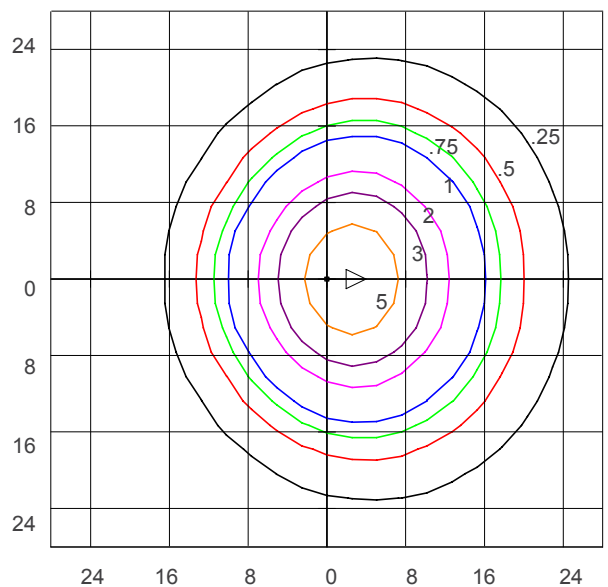
LED ENGINE	DESCRIPTION	LUMINAIRE LUMENS*	B.U.G. RATING	STARTING TEMPERATURE °C	CLASSIFICATION
3000K LED (single luminaire)	50W LED driver	2536	B1-U1-G1	-30	TYPE II
4000K LED (single luminaire)	50W LED driver	2536	B1-U1-G1	-30	TYPE II
3000K LED (double luminaire)	(2) 50W LED drivers	5202	B2-U1-G1	-30	TYPE VS
4000K LED (double luminaire)	(2) 50W LED drivers	5202	B2-U1-G1	-30	TYPE VS

POLAR CANDELA PLOT (3000K/4000K SINGLE LUMINAIRE)



Maximum Candela = 1931.8; Located at Horizontal Angle = 67.5;
Vertical Angle = 2.5
#1 - Vertical Plane Through Horizontal Angles (67.5 - 247.5) (Through Max. Cd.)
#2 - Horizontal Cone Through Vertical Angle (2.5) (Through Max Cd.)

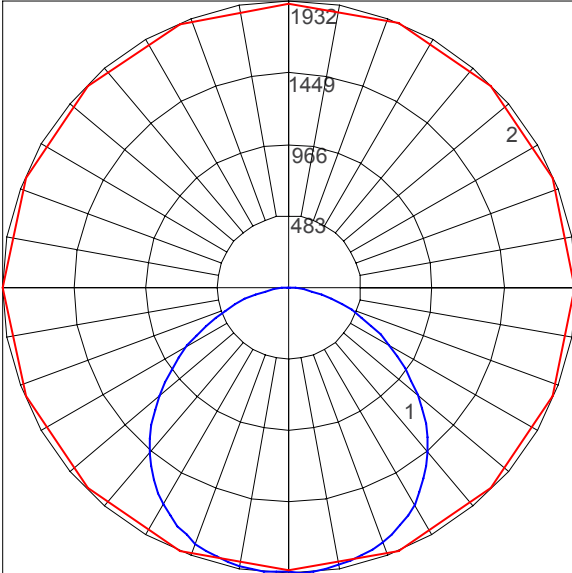
ISOFOOTCANDLE PLOT (3000K/4000K SINGLE LUMINAIRE)



Isofootcandle Plot shows light distribution pattern at ground level with custom LED light engine. Readings have been taken assuming the photometric center of the luminaire to be 11.83 feet above ground level. IES files for standard lamps are available on our website.

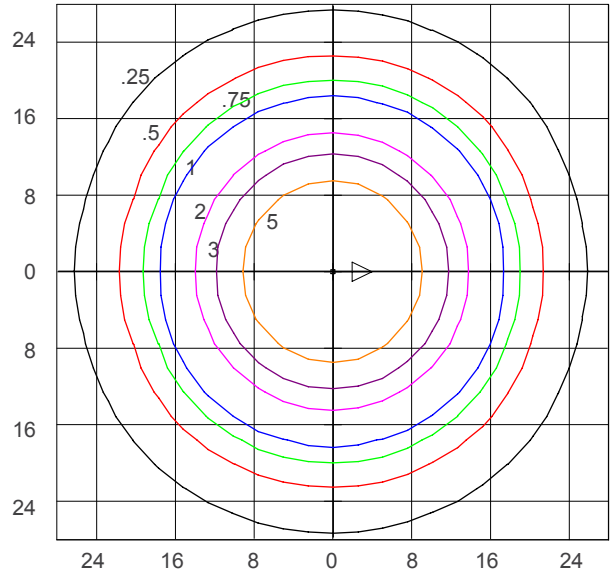


POLAR CANDELA PLOT (3000K/4000K DOUBLE LUMINAIRE)



Maximum Candela = 2096; Located at Horizontal Angle = 90
Vertical Angle = 5
#1 - Vertical Plane Through Horizontal Angles (90-270) (Through Max. Cd.)
#2 - Horizontal Cone Through Vertical Angle (5) (Through Max Cd.)

ISOFOOTCANDLE PLOT (3000K/4000K DOUBLE LUMINAIRE)



Isofootcandle Plot shows light distribution pattern at ground level with custom LED light engine. Readings have been taken assuming the photometric center of the luminaire to be 11.83 feet above ground level. IES files for standard lamps are available on our website.