

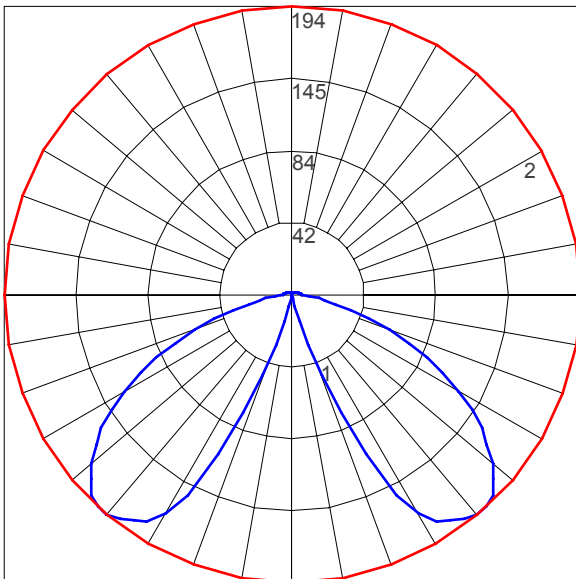


LAMP DESCRIPTIONS

LED ENGINE	DESCRIPTION	COLOR TEMPERATURE	LUMINAIRE LUMENS*	B.U.G. RATINGS	STARTING TEMPERATURE °C
3000K LED	32W	3000K	643	B0-U2-G0	-30
4000K LED	32W	4000K	643	B0-U2-G0	-30

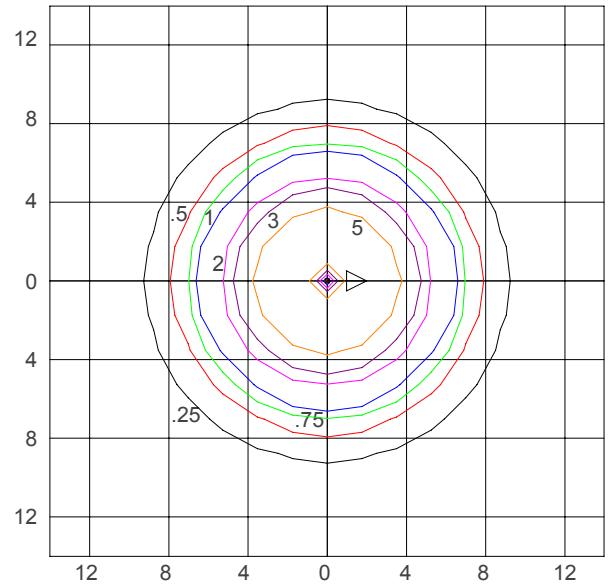
*Luminaire lumens represents the absolute photometry for the luminaire, and indicates the lumens out of the entire fixture.

POLAR CANDELA PLOT (32W LED, 3000K/4000K)



Maximum Candela = 193.8; Located at Horizontal Angle = 0; Vertical Angle = 40
 #1 - Vertical Plane Through Horizontal Angles (0-180) (Through Max. Cd.)
 #2 - Horizontal Cone Through Vertical Angle (40) (Through Max Cd.)

ISOFOOTCANDLE PLOT (32W LED, 3000K/4000K)



Isofootcandle Plot shows light distribution pattern at ground level with custom LED light engine with no shield. Readings have been taken assuming the photometric center of the luminaire to be 3.3 feet above ground level. IES files for standard lamps are available on our website.