



KNIGHT PEDESTRIAN

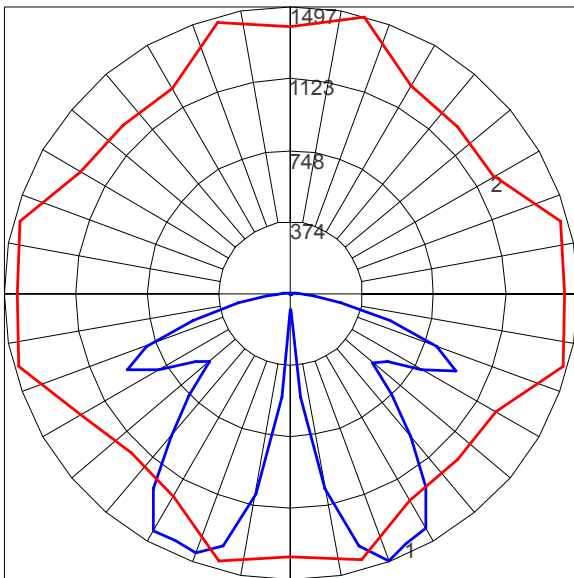
LIGHTING PLOTS

LAMP DESCRIPTIONS

LAMP	DESCRIPTION	BASE	COLOR TEMPERATURE	LUMINAIRE LUMENS*	B.U.G. RATING	ANSI
M150	150W metal halide	E26 medium	4,000	4436	B2-U3-G1	M102/E

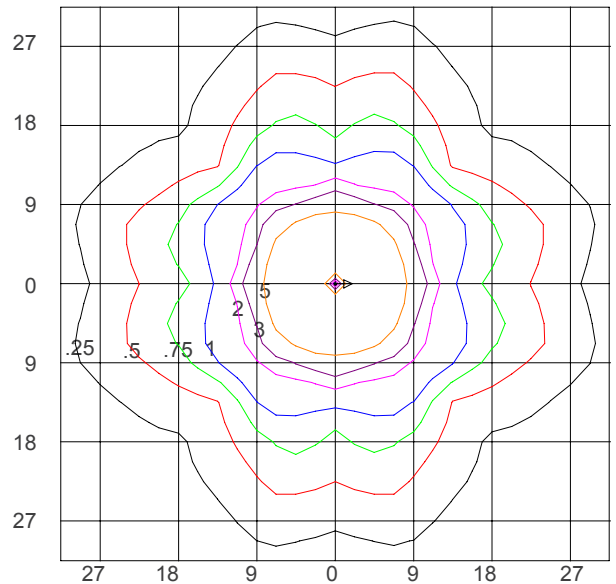
*Luminaire lumens represents the absolute photometry for the luminaire, and indicates the lumens out of the entire fixture

POLAR CANDELA PLOT (150W METAL HALIDE)



Maximum Candela = 1496.79; Located at Horizontal Angle = 75; Vertical Angle = 20
 #1 - Vertical Plane Through Horizontal Angles (75 - 255) (Through Max. Cd.)
 #2 - Horizontal Cone Through Vertical Angle (20) (Through Max Cd.)

ISOFOOTCANDLE PLOT (150W METAL HALIDE)



Isofootcandle Plot shows light distribution pattern at ground level with 150W metal halide E26 medium base lamp. Readings have been taken assuming the photometric center of the luminaire to be 11.15 feet above ground level. IES files for standard lamps are available on our website.