

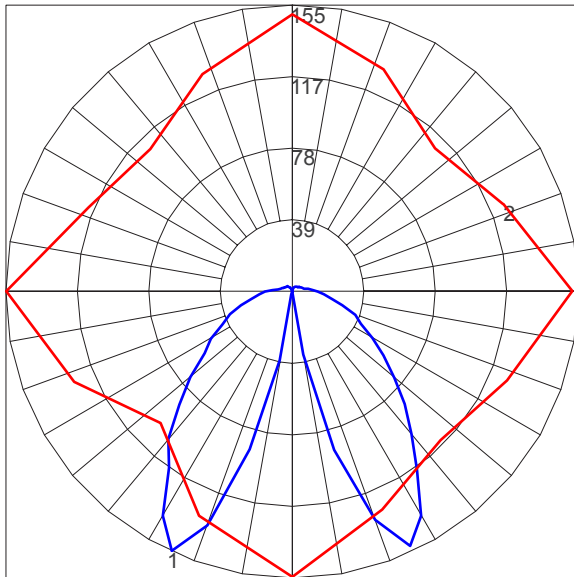


LAMP DESCRIPTIONS

LAMP	DESCRIPTION	BASE	COLOR TEMPERATURE	LUMINAIRE LUMENS*	B.U.G. RATING	ANSI CODE
3000K LED	16W custom LED light engine	N/A	3,000K	362	B0-U2-G0	N/A
4000K LED	16W custom LED light engine	N/A	4,000K	362	B0-U2-G0	N/A
CFM26	26W triple tube 4-pin compact fluorescent	GX24q-3	4,100	306	B0-U1-G0	---
CFM42	42W triple tube 4-pin compact fluorescent	GX24q-4	4,100	518	B0-U1-G0	---
M70	70W metal halide, high intensity discharge	E26 medium	4,000	962	B1-U1-G0	M143/M98/E

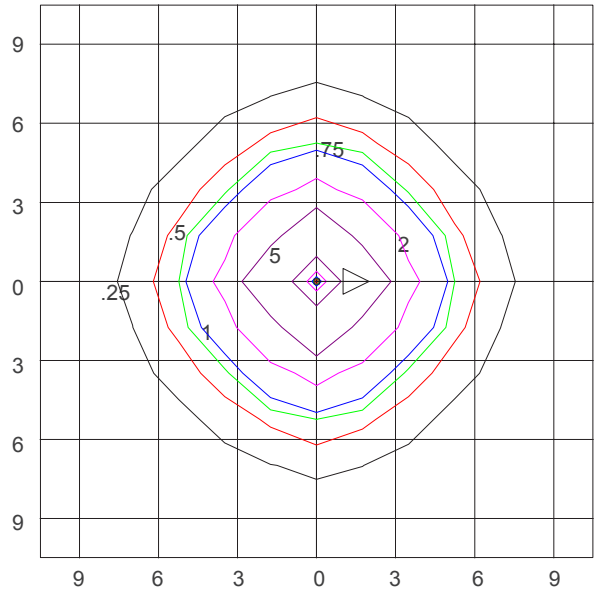
*Luminaire lumens represents the absolute photometry for the luminaire, and indicates the lumens out of the entire fixture.

POLAR CANDELA PLOT (16W LED, 3000K/4000K)



Maximum Candela = 155.4; Located at Horizontal Angle = 180; Vertical Angle = 25
 #1 - Vertical Plane Through Horizontal Angles (180 - 0) (Through Max. Cd.)
 #2 - Horizontal Cone Through Vertical Angle (25) (Through Max Cd.)

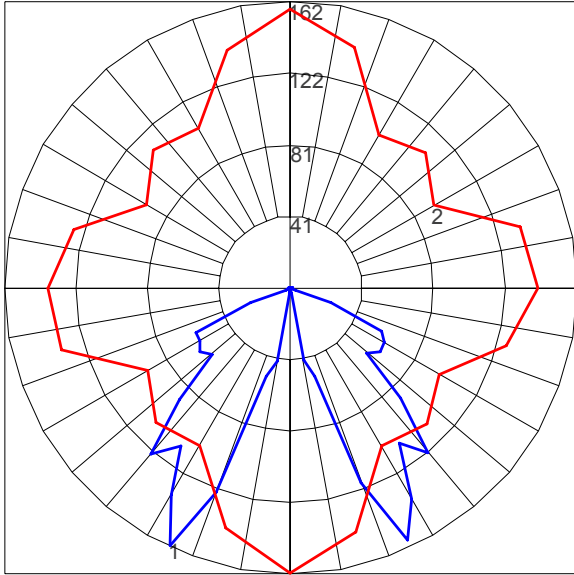
ISOFOOTCANDLE PLOT (16W LED, 3000K/4000K)



Isofootcandle Plot shows light distribution pattern at ground level with 16W LED light engine. Readings have been taken assuming the photometric center of the luminaire to be 3.29 feet above ground level. IES files for standard lamps are available on our website.

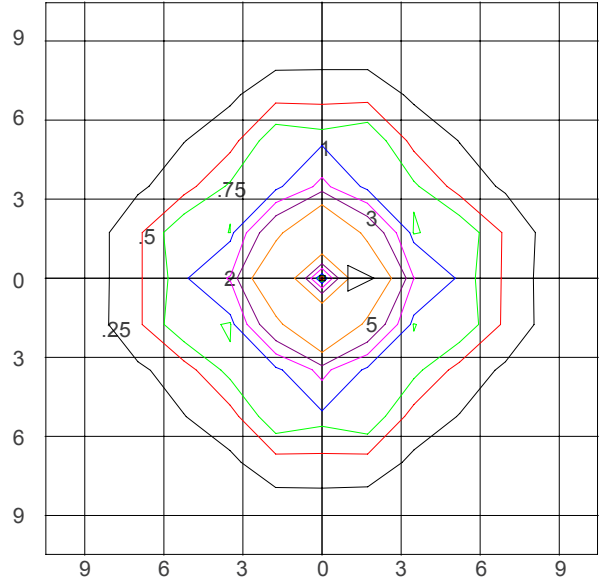


POLAR CANDELA PLOT (26W COMPACT FLUORESCENT)



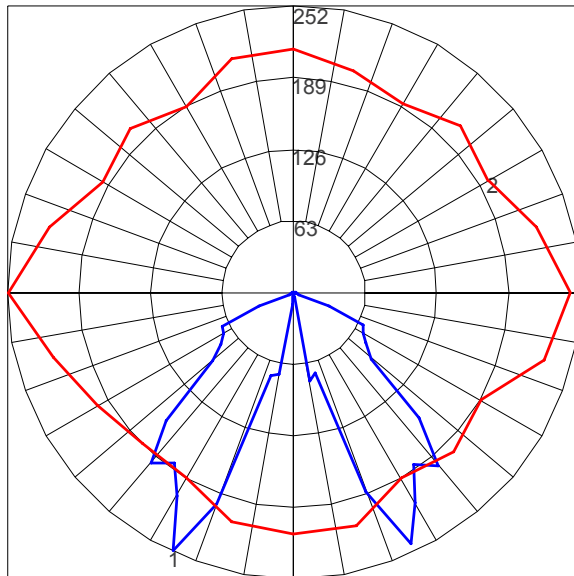
Maximum Candela = 162.3; Located at Horizontal Angle = 270; Vertical Angle = 25
#1 - Vertical Plane Through Horizontal Angles (270 - 90) (Through Max. Cd.)
#2 - Horizontal Cone Through Vertical Angle (25) (Through Max Cd.)

ISOFOOTCANDLE PLOT (26W COMPACT FLUORESCENT)



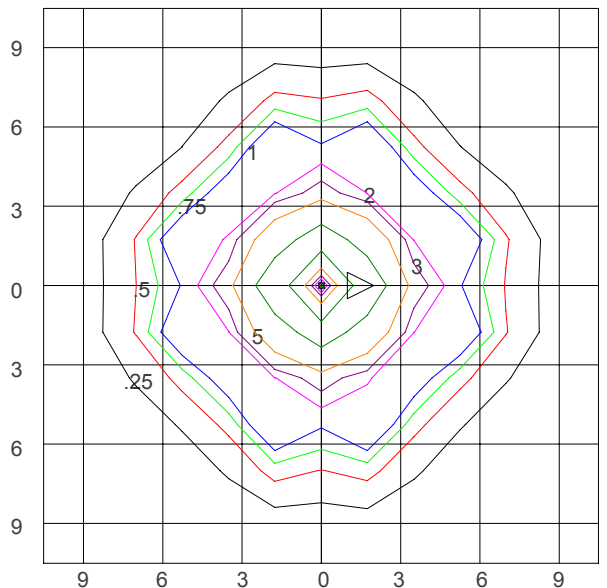
Isofootcandle Plot shows light distribution pattern at ground level with 26W compact fluorescent GX24q-3 base lamp. Readings have been taken assuming the photometric center of the luminaire to be 3.29 feet above ground level. IES files for standard lamps are available on our website.

POLAR CANDELA PLOT (42W COMPACT FLUORESCENT)



Maximum Candela = 251.72; Located at Horizontal Angle = 180; Vertical Angle = 25
#1 - Vertical Plane Through Horizontal Angles (180 - 0) (Through Max. Cd.)
#2 - Horizontal Cone Through Vertical Angle (25) (Through Max Cd.)

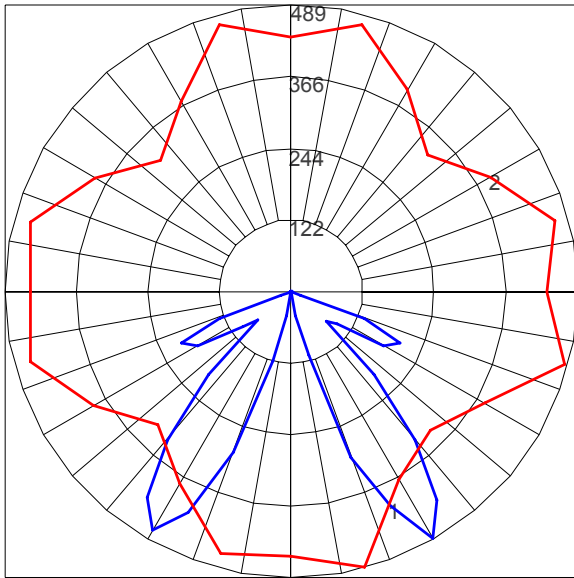
ISOFOOTCANDLE PLOT (42W COMPACT FLUORESCENT)



Isofootcandle Plot shows light distribution pattern at ground level with 42W compact fluorescent GX24q-4 base lamp. Readings have been taken assuming the photometric center of the luminaire to be 3.29 feet above ground level. IES files for standard lamps are available on our website.

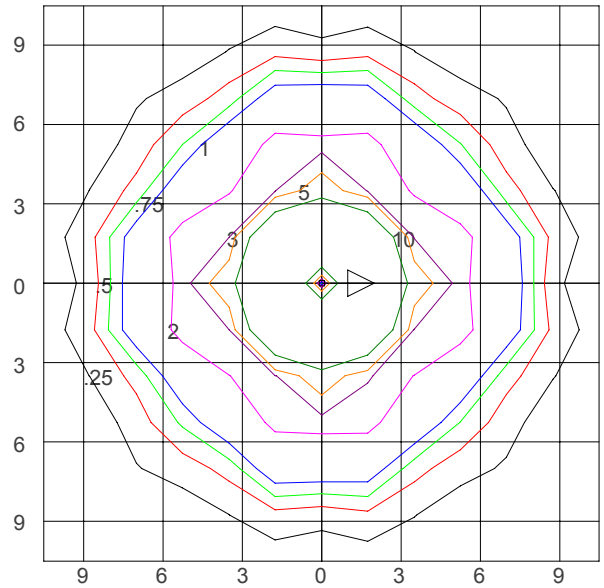


POLAR CANDELA PLOT (70W METAL HALIDE)



Maximum Candela = 488.5; Located at Horizontal Angle = 285; Vertical Angle = 30
 #1 - Vertical Plane Through Horizontal Angles (285 - 105) (Through Max. Cd.)
 #2 - Horizontal Cone Through Vertical Angle (30) (Through Max Cd.)

ISOFOOTCANDLE PLOT (70W METAL HALIDE)



Isofootcandle Plot shows light distribution pattern at ground level with 70W metal halide E25 medium base lamp with no shield. Readings have been taken assuming the photometric center of the luminaire to be 3.29 feet above ground level. IES files for standard lamps are available on our website.