



LIGHT COLUMN BOLLARD, SERIES 600

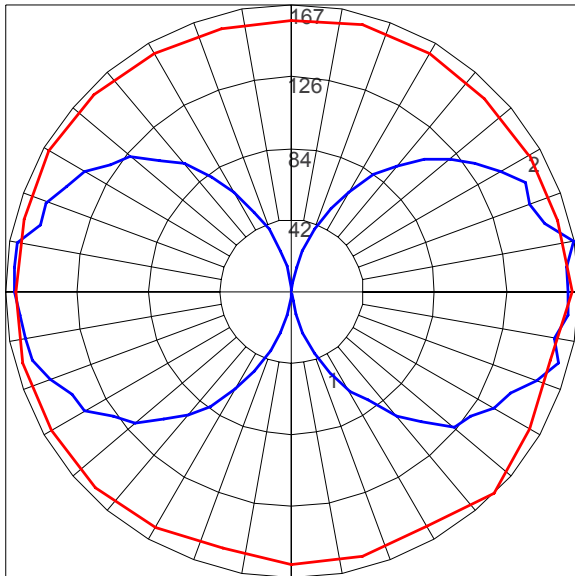
LIGHTING PLOTS

LAMP DESCRIPTIONS

LAMP	DESCRIPTION	BASE	COLOR TEMPERATURE	LUMINAIRE LUMENS*	B.U.G. RATING
3000K LED	17W custom LED light engine	N/A	3,000K	1542	B1-U4-G1
4000K LED	17W custom LED light engine	N/A	4,000K	1542	B1-U4-G1
RGBW LED	78W custom LED light engine	N/A	RGBW	varies	varies
(2) F14T5	14W T5 linear fluorescent	Mini bi-pin	4,100K	2220	B1-U4-G2
(2) F24T5/HO	24W T5HO linear fluorescent	Mini bi-pin	4,100K	3288	B1-U5-G2

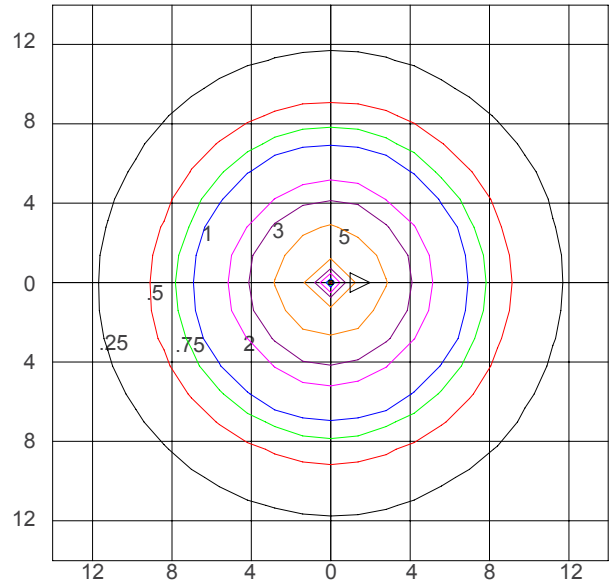
*Luminaire lumens represents the absolute photometry for the luminaire, and indicates the lumens out of the entire fixture.

POLAR CANDELA PLOT (17W LED, 3000K/4000K)



Maximum Candela = 167.44; Located at Horizontal Angle = 315;
 Vertical Angle = 100
 #1 - Vertical Plane Through Horizontal Angles (315 - 135) (Through Max. Cd.)
 #2 - Horizontal Cone Through Vertical Angle (100) (Through Max Cd.)

ISOFOOTCANDLE PLOT (17W LED, 3000K/4000K)



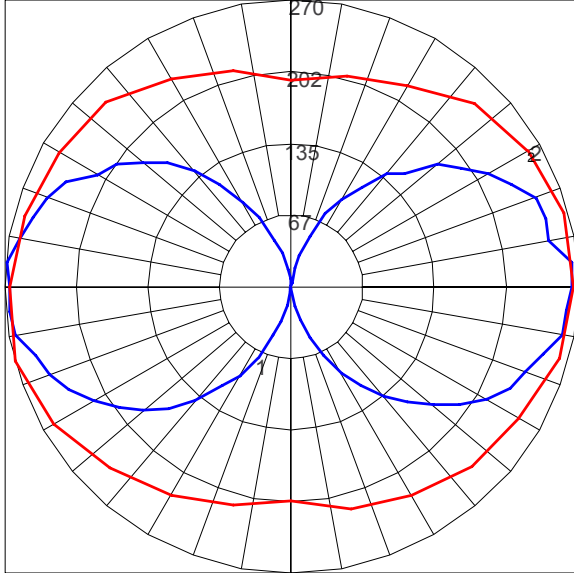
Isofootcandle Plot shows light distribution pattern at ground level with custom LED light engine with no shield. Readings have been taken assuming the photometric center of the luminaire to be 2.74 feet above ground level. IES files for standard lamps are available on our website.



LIGHT COLUMN BOLLARD, SERIES 600

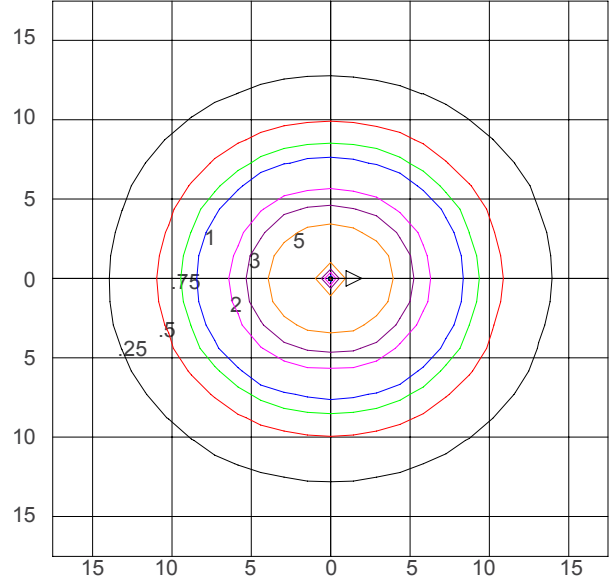
LIGHTING PLOTS

POLAR CANDELA PLOT (14W T5 LINEAR FLUORESCENT)



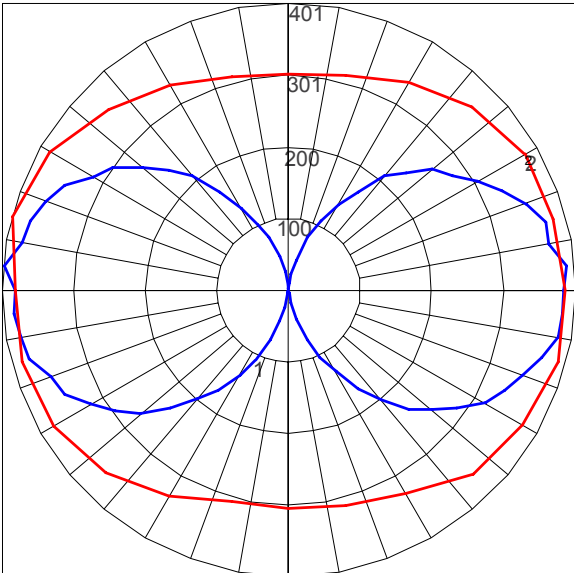
Maximum Candela = 269.98; Located at Horizontal Angle = 195;
Vertical Angle = 95
#1 - Vertical Plane Through Horizontal Angles (195 - 15) (Through Max. Cd.)
#2 - Horizontal Cone Through Vertical Angle (95) (Through Max Cd.)

ISOFOOTCANDLE PLOT (14W T5 LINEAR FLUORESCENT)



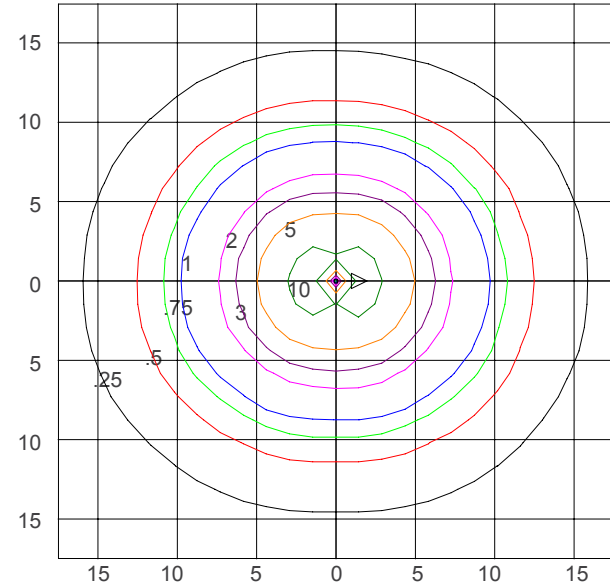
Isofootcandle Plot shows light distribution pattern at ground level with (2) 14W T5 linear fluorescent mini bi-pin base lamps with no shield. Readings have been taken assuming the photometric center of the luminaire to be 2.74 feet above ground level. IES files for standard lamps are available on our website.

POLAR CANDELA PLOT (24W T5/HO LINEAR FLUORESCENT)



Maximum Candela = 400.96; Located at Horizontal Angle = 165;
Vertical Angle = 95
#1 - Vertical Plane Through Horizontal Angles (165 - 345) (Through Max. Cd.)
#2 - Horizontal Cone Through Vertical Angle (95) (Through Max Cd.)

ISOFOOTCANDLE PLOT (24W T5/HO LINEAR FLUORESCENT)



Isofootcandle Plot shows light distribution pattern at ground level with (2) 24W T5/HO linear fluorescent mini bi-pin base lamps with no shield. Readings have been taken assuming the photometric center of the luminaire to be 2.74 feet above ground level. IES files for standard lamps are available on our website.

T 800.451.0410 | www.forms-surfaces.com

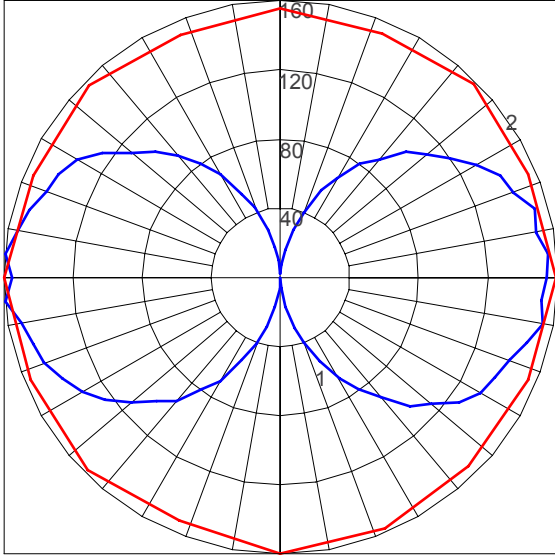
FORMS+SURFACES®



LIGHT COLUMN BOLLARD, SERIES 600

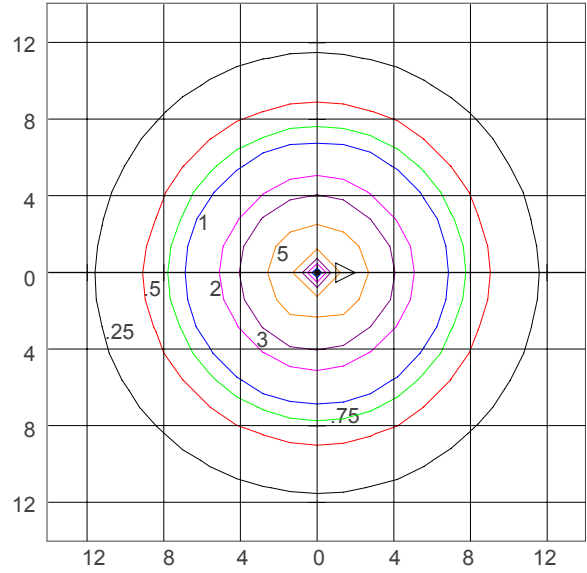
LIGHTING PLOTS

POLAR CANDELA PLOT (RGBW LED, ALL ON)



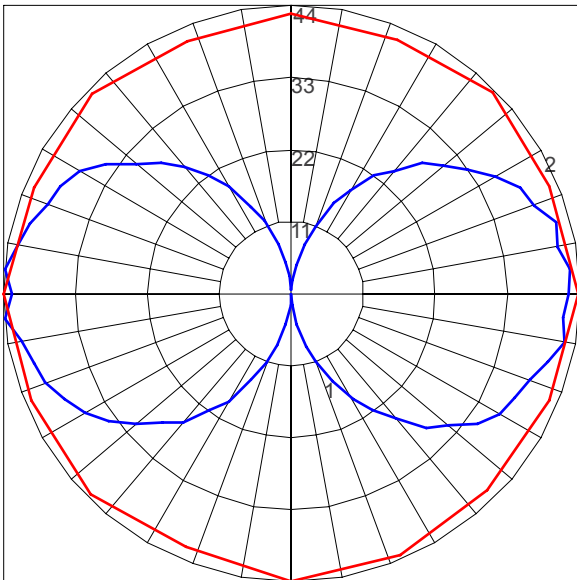
Maximum Candela = 159.83; Located at Horizontal Angle = 270;
Vertical Angle = 95
#1 - Vertical Plane Through Horizontal Angles (270-90) (Through Max. Cd.)
#2 - Horizontal Cone Through Vertical Angle (95) (Through Max Cd.)

ISOFOOTCANDLE PLOT (RGBW LED, ALL ON)



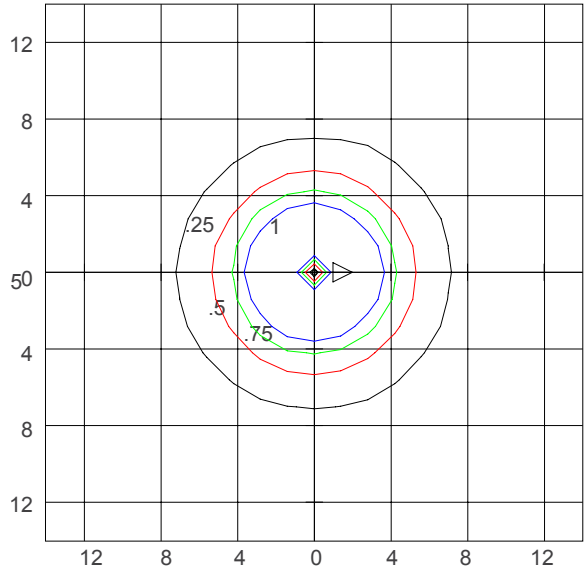
Isofootcandle Plot shows light distribution pattern at ground level with custom RGBW LED light engine with no shield. Readings have been taken assuming the photometric center of the luminaire to be 2.74 feet above ground level. IES files for standard lamps are available on our website.

POLAR CANDELA PLOT (RGBW LED, W ONLY)



Maximum Candela = 44.396; Located at Horizontal Angle = 270;
Vertical Angle = 95
#1 - Vertical Plane Through Horizontal Angles (270 - 90) (Through Max. Cd.)
#2 - Horizontal Cone Through Vertical Angle (95) (Through Max Cd.)

ISOFOOTCANDLE PLOT (RGBW LED, W ONLY)



Isofootcandle Plot shows light distribution pattern at ground level with custom RGBW LED light engine with no shield. Readings have been taken assuming the photometric center of the luminaire to be 2.74 feet above ground level. IES files for standard lamps are available on our website.

T 800.451.0410 | www.forms-surfaces.com

FORMS+SURFACES®

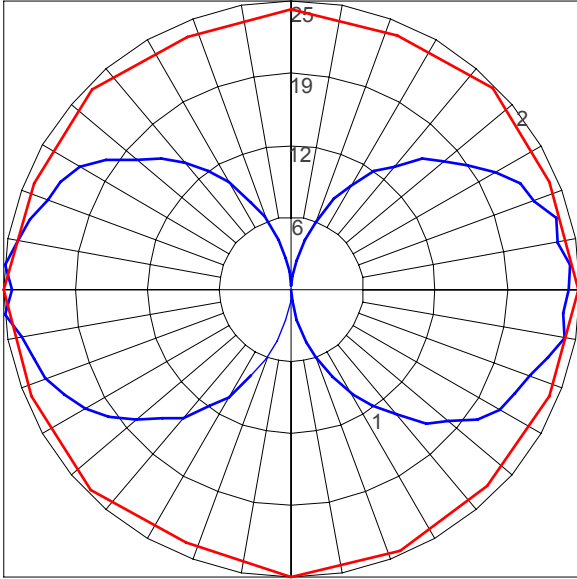
© 2019 Forms+Surfaces® | All dimensions are nominal. Specifications and pricing subject to change without notice. For the most current version of this document, please refer to our website at www.forms-surfaces.com.



LIGHT COLUMN BOLLARD, SERIES 600

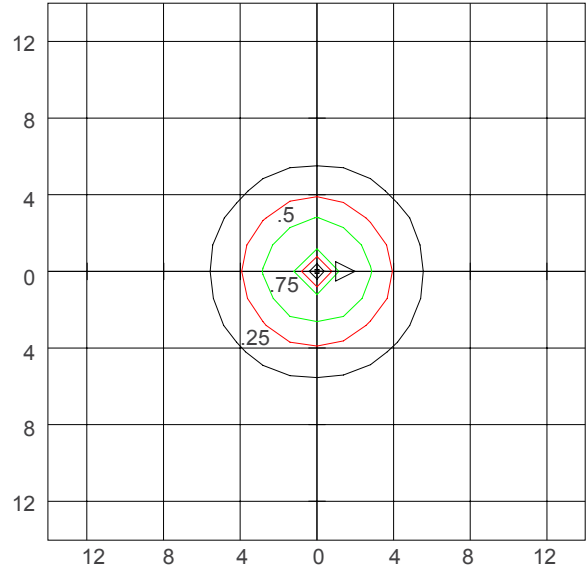
LIGHTING PLOTS

POLAR CANDELA PLOT (RGBW LED, R ONLY)



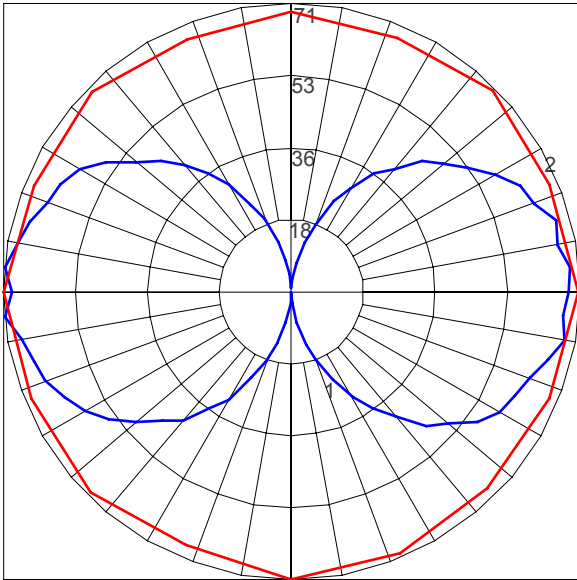
Maximum Candela = 24.943; Located at Horizontal Angle = 270; Vertical Angle = 95
#1 - Vertical Plane Through Horizontal Angles (270-90) (Through Max. Cd.)
#2 - Horizontal Cone Through Vertical Angle (95) (Through Max Cd.)

ISOFOOTCANDLE PLOT (RGBW LED, R ONLY)



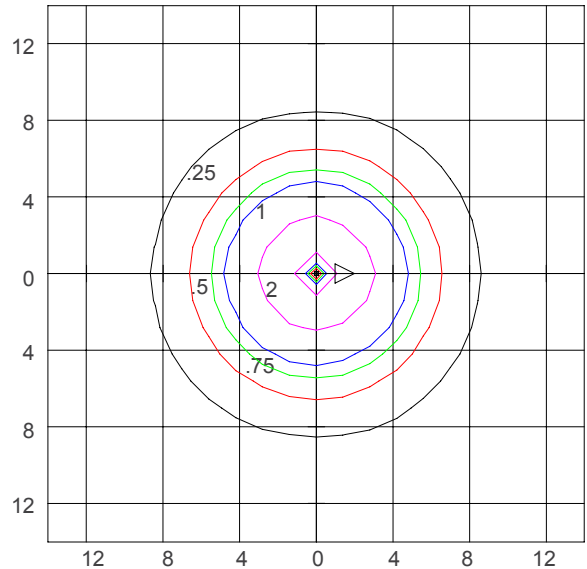
Isofootcandle Plot shows light distribution pattern at ground level with custom RGBW LED light engine with no shield. Readings have been taken assuming the photometric center of the luminaire to be 2.74 feet above ground level. IES files for standard lamps are available on our website.

POLAR CANDELA PLOT (RGBW LED, G ONLY)



Maximum Candela = 44.396; Located at Horizontal Angle = 270; Vertical Angle = 95
#1 - Vertical Plane Through Horizontal Angles (270 - 90) (Through Max. Cd.)
#2 - Horizontal Cone Through Vertical Angle (95) (Through Max Cd.)

ISOFOOTCANDLE PLOT (RGBW LED, G ONLY)



Isofootcandle Plot shows light distribution pattern at ground level with custom RGBW LED light engine with no shield. Readings have been taken assuming the photometric center of the luminaire to be 2.74 feet above ground level. IES files for standard lamps are available on our website.

T 800.451.0410 | www.forms-surfaces.com

FORMS+SURFACES®

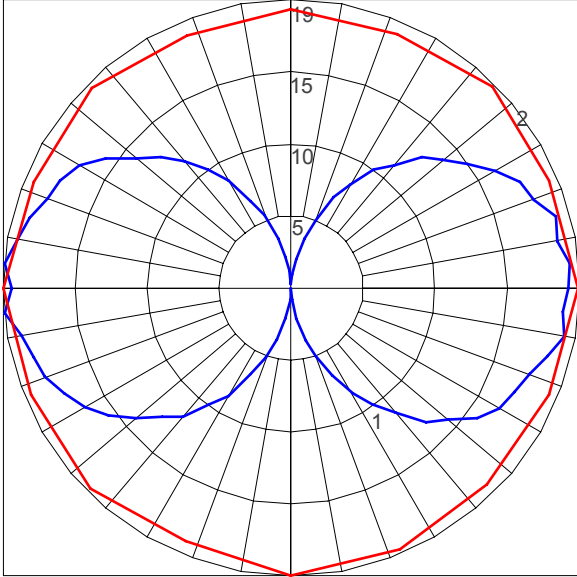
© 2019 Forms+Surfaces® | All dimensions are nominal. Specifications and pricing subject to change without notice. For the most current version of this document, please refer to our website at www.forms-surfaces.com.



LIGHT COLUMN BOLLARD, SERIES 600

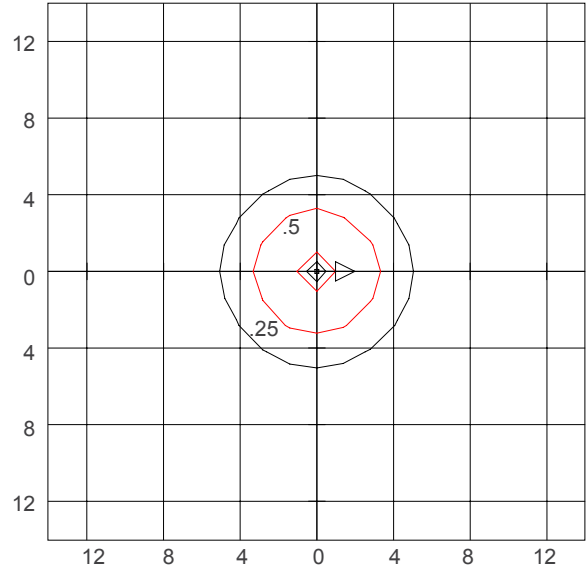
LIGHTING PLOTS

POLAR CANDELA PLOT (RGBW LED, B ONLY)



Maximum Candela = 19.455; Located at Horizontal Angle = 270;
 Vertical Angle = 95
 #1 - Vertical Plane Through Horizontal Angles (270-90) (Through Max. Cd.)
 #2 - Horizontal Cone Through Vertical Angle (95) (Through Max Cd.)

ISOFOOTCANDLE PLOT (RGBW LED, B ONLY)



Isofootcandle Plot shows light distribution pattern at ground level with custom RGBW LED light engine with no shield. Readings have been taken assuming the photometric center of the luminaire to be 2.74 feet above ground level. IES files for standard lamps are available on our website.