



LIGHT COLUMN PEDESTRIAN, SERIES 500

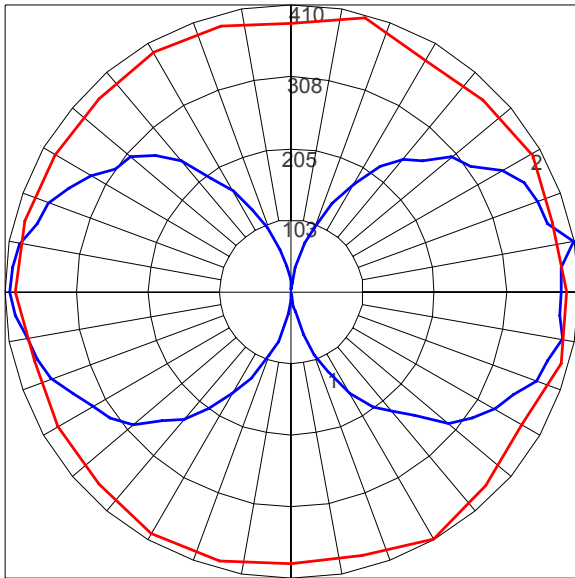
LIGHTING PLOTS

LAMP DESCRIPTIONS

LAMP	DESCRIPTION	BASE	COLOR TEMPERATURE	LUMINAIRE LUMENS*	B.U.G. RATING
3000K LED	32W custom LED light engine	N/A	3,000K	3783	B1-U5-G2
4000K LED	32W custom LED light engine	N/A	4,000K	3783	B1-U5-G2
(2) F32T8	32W T8 linear fluorescent	Medium bi-pin	4,100K	4970	B2-U5-G3
(2) F48T8/HO	48W T8/HO linear fluorescent	Recessed double	4,100K	6783	B2-U5-G3

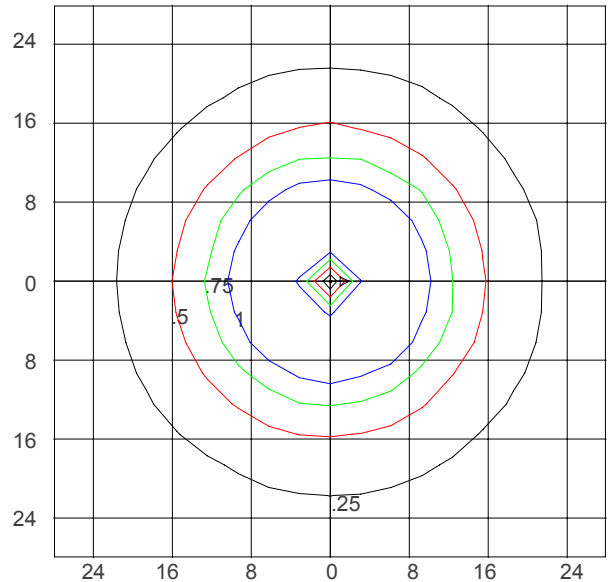
*Luminaire lumens represents the absolute photometry for the luminaire, and indicates the lumens out of the entire fixture.

POLAR CANDELA PLOT (32W LED, 3000K/4000K)



Maximum Candela = 410.2; Located at Horizontal Angle = 300; Vertical Angle = 100
 #1 - Vertical Plane Through Horizontal Angles (300 - 120) (Through Max. Cd.)
 #2 - Horizontal Cone Through Vertical Angle (100) (Through Max Cd.)

ISOFOOTCANDLE PLOT (32W LED, 3000K/4000K)



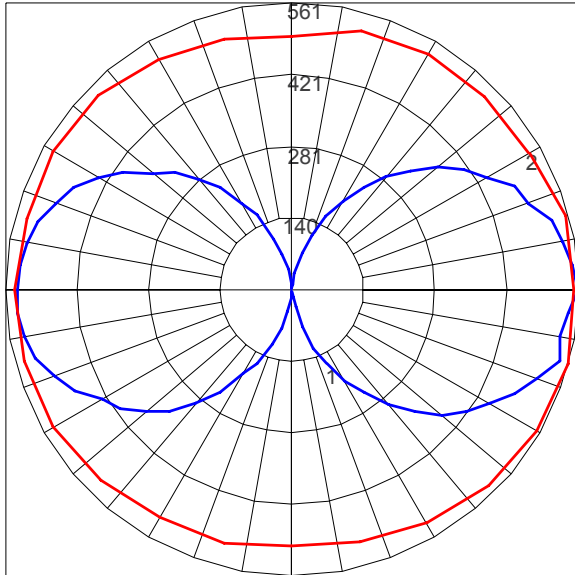
Isofootcandle Plot shows light distribution pattern at ground level with custom LED light engine with no shield. Readings have been taken assuming the photometric center of the luminaire to be 8.93 feet above ground level. IES files for standard lamps are available on our website.



LIGHT COLUMN PEDESTRIAN, SERIES 500

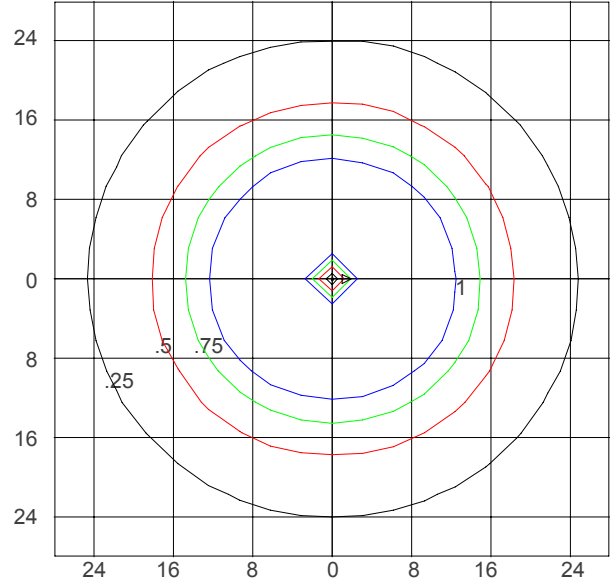
LIGHTING PLOTS

POLAR CANDELA PLOT (32W T8 LINEAR FLUORESCENT)



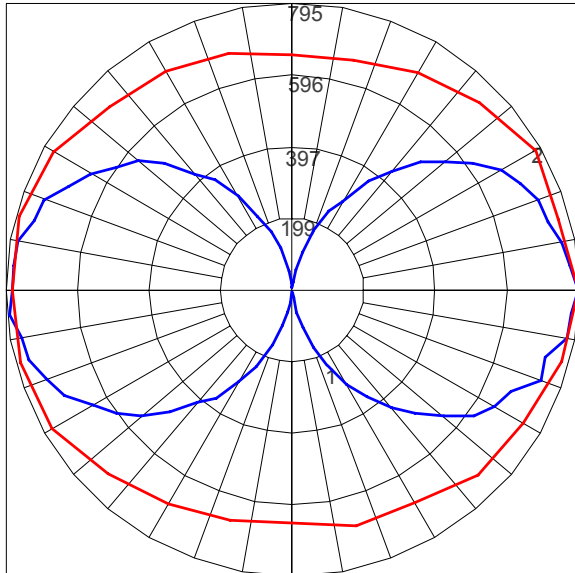
Maximum Candela = 561.19; Located at Horizontal Angle = 345; Vertical Angle = 90
#1 - Vertical Plane Through Horizontal Angles (345 - 165) (Through Max. Cd.)
#2 - Horizontal Cone Through Vertical Angle (90) (Through Max Cd.)

ISOFOOTCANDLE PLOT (32W T8 LINEAR FLUORESCENT)



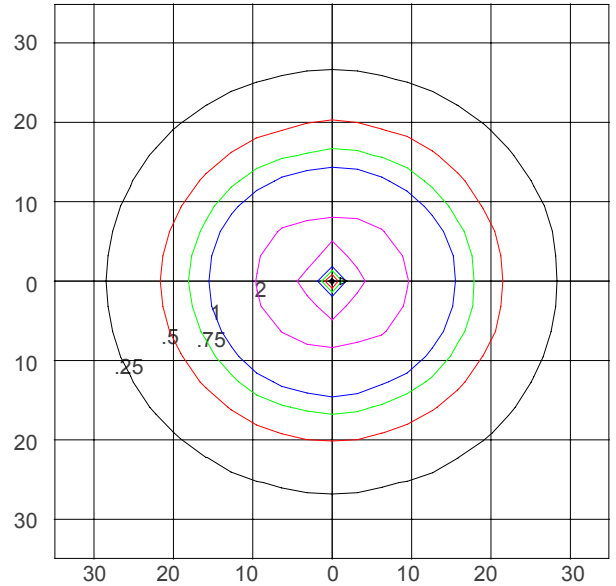
Isofootcandle Plot shows light distribution pattern at ground level with (2) 32W T8 linear fluorescent mini bi-pin base lamps with no shield. Readings have been taken assuming the photometric center of the luminaire to be 8.93 feet above ground level. IES files for standard lamps are available on our website.

POLAR CANDELA PLOT (48W T8/HO LINEAR FLUORESCENT)



Maximum Candela = 794.81; Located at Horizontal Angle = 0; Vertical Angle = 90
#1 - Vertical Plane Through Horizontal Angles (0 - 180) (Through Max. Cd.)
#2 - Horizontal Cone Through Vertical Angle (90) (Through Max Cd.)

ISOFOOTCANDLE PLOT (48W T8/HO LINEAR FLUORESCENT)



Isofootcandle Plot shows light distribution pattern at ground level with (2) 48W T8/HO linear fluorescent mini bi-pin base lamps with no shield. Readings have been taken assuming the photometric center of the luminaire to be 8.93 feet above ground level. IES files for standard lamps are available on our website.

T 800.451.0410 | www.forms-surfaces.com

FORMS+SURFACES®