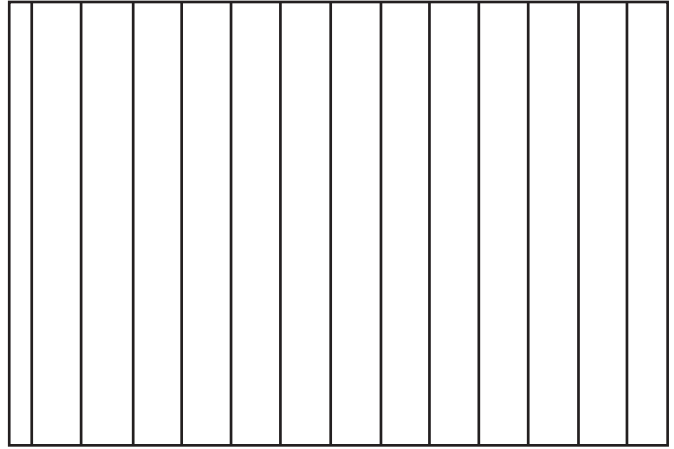


FULL SHEET PATTERN ORIENTATION

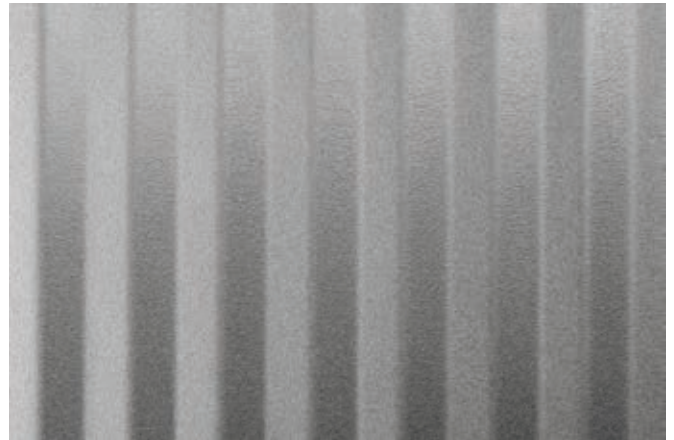
NOTE: THE ABOVE ILLUSTRATION IS FOR ORIENTATION ONLY. ACTUAL PATTERN MAY VARY FROM PATTERN SHOWN.



DETAIL 1:1



PROFILE 1:1



SWATCH

PART #: 99147-024

MATERIAL: STAINLESS STEEL

FINISH: SEASTONE

PATTERN: DENVER (vertical)

SHEET DIMENSIONS: 47.22" X 120" X .032"
(1199.3 mm X 3048 mm X 0.8 mm)

PATTERN HEIGHT: .053" (1.3 mm)

QTY: _____

APPROVED BY: _____

UNLESS OTHERWISE SPECIFIED, DIMENSIONS ARE IN INCHES		FORMS+SURFACES® 30 Pine Street, Pittsburgh, PA 15223 Tel(800) 451-0410 Fax(412) 781-7840	
TOLERANCES (UNLESS OTHERWISE SPECIFIED): FRACTIONAL: ±1/4" ANGULAR/BEND: ±1° TWO PLACE DECIMAL: ±.030 THREE PLACE DECIMAL: ±.020 MATERIAL: STAINLESS STEEL		NAME	DATE
PATTERN: DENVER		DWN	JS 04/04/2011
WEIGHT: -		DO NOT SCALE DRAWING	
SOURCE: -		PROPRIETARY AND CONFIDENTIAL	
SCALE: N.T.S		THE INFORMATION CONTAINED IN THIS DRAWING IS THE SOLE PROPERTY OF FORMS+SURFACES. ANY REPRODUCTION IN PART OR AS A WHOLE WITHOUT WRITTEN PERMISSION IS PROHIBITED.	
		DESCRIPTION:	
		IMPRESSION SHEETS	
SIZE	DWG. NO.	REV	SHEET
B		000	1 OF 1