

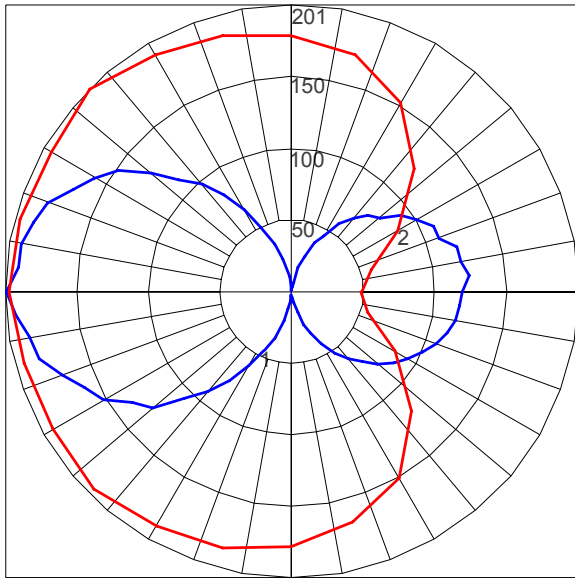


LAMP DESCRIPTIONS

LAMP	DESCRIPTION	BASE	COLOR TEMPERATURE	LUMINAIRE LUMENS*	B.U.G. RATING
(1) FT24 BX	24W single twin tube 4-pin compact fluorescent	2G11	4,000K	1376	B1-U4-G2
(2) FT24 BX	24W single twin tube 4-pin compact fluorescent	2G11	4,000K	2606	B1-U5-G2

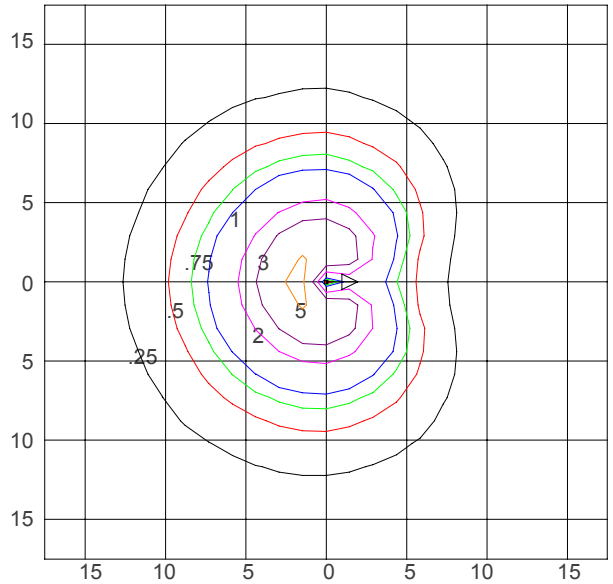
*Luminaire lumens represents the absolute photometry for the luminaire, and indicates the lumens out of the entire fixture

POLAR CANDELA PLOT (1- 24W COMPACT FLUORESCENT)



Maximum Candela = 200.52; Located at Horizontal Angle = 135; Vertical Angle = 90
 #1 - Vertical Plane Through Horizontal Angles (135 - 315) (Through Max. Cd.)
 #2 - Horizontal Cone Through Vertical Angle (90) (Through Max Cd.)

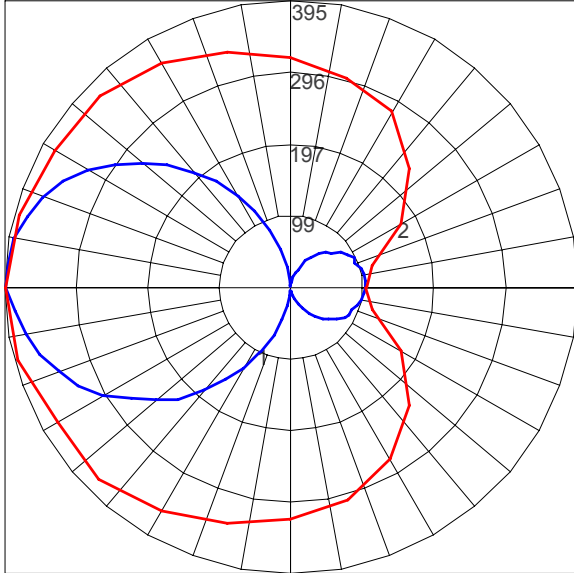
ISOFOOTCANDLE PLOT (1- 24W COMPACT FLUORESCENT)



Isofootcandle Plot shows light distribution pattern at ground level with (1) 24W CFL 2G11 base lamp. Readings have been taken assuming the photometric center of the luminaire to be 2.85 feet above ground level. IES files for standard lamps are available on our website.

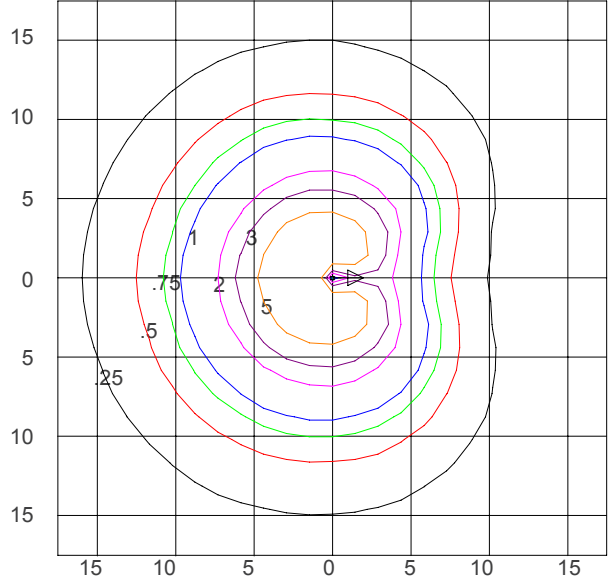


POLAR CANDELA PLOT (2- 24W COMPACT FLUORESCENT)



Maximum Candela = 394.6; Located at Horizontal Angle = 180; Vertical Angle = 90
 #1 - Vertical Plane Through Horizontal Angles (180 - 0) (Through Max. Cd.)
 #2 - Horizontal Cone Through Vertical Angle (90) (Through Max Cd.)

ISOFOOTCANDLE PLOT (2- 24W COMPACT FLUORESCENT)



Isofootcandle Plot shows light distribution pattern at ground level with (2) 24W CFL 2G11 base lamp. Readings have been taken assuming the photometric center of the luminaire to be 2.85 feet above ground level. IES files for standard lamps are available on our website.