



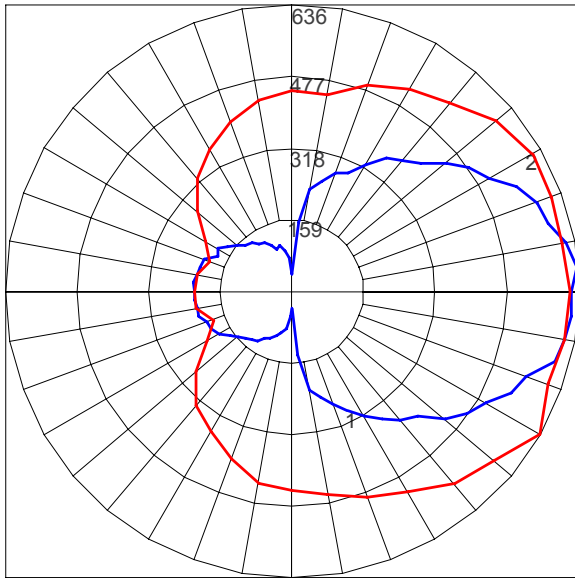
**TRIO PEDESTRIAN**

**LAMP DESCRIPTIONS**

LAMP	DESCRIPTION	BASE	COLOR TEMPERATURE	LUMINAIRE LUMENS*	B.U.G. RATING
(3) L22.5T8	22.5W T8 linear LED	Medium bi-pin	4,000K	4223	B1-U5-G3
(2) F32T8	32W T8 linear fluorescent	Medium bi-pin	4,100K	3970	B1-U5-U3
(2) F48T8/HO	48W T8/HO linear fluorescent	Recessed double	4,100K	5204	B2-U5-G3

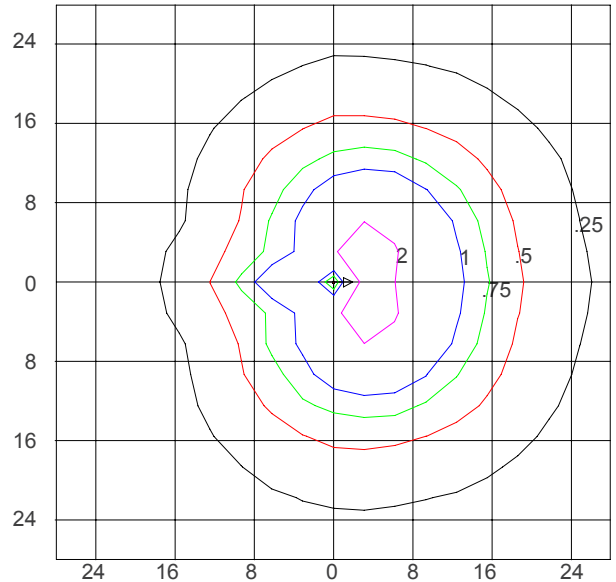
\*Luminaire lumens represents the absolute photometry for the luminaire, and indicates the lumens out of the entire fixture.

**POLAR CANDELA PLOT (22.5W T8 LINEAR LED)**



Maximum Candela = 636.45; Located at Horizontal Angle = 330; Vertical Angle = 95  
 #1 - Vertical Plane Through Horizontal Angles (330 - 150) (Through Max. Cd.)  
 #2 - Horizontal Cone Through Vertical Angle (95) (Through Max Cd.)

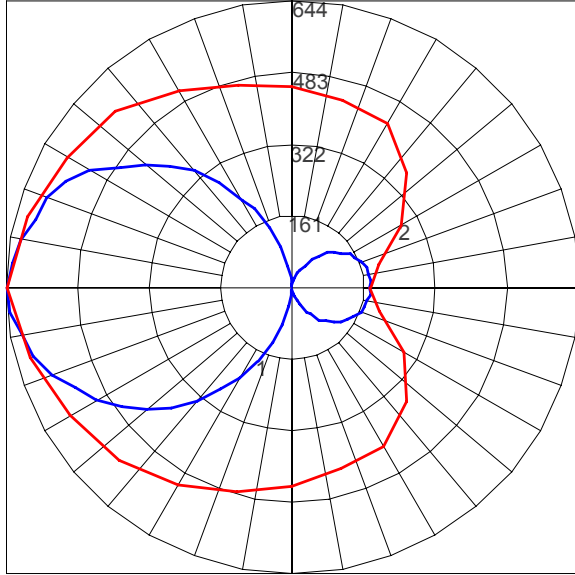
**ISOFOOTCANDLE PLOT (22.5W T8 LINEAR LED)**



Isofootcandle Plot shows light distribution pattern at ground level with (3) 22.5W linear LED medium bi-pin base lamps. Readings have been taken assuming the photometric center of the luminaire to be 9.25 feet above ground level. IES files for standard lamps are available on our website.

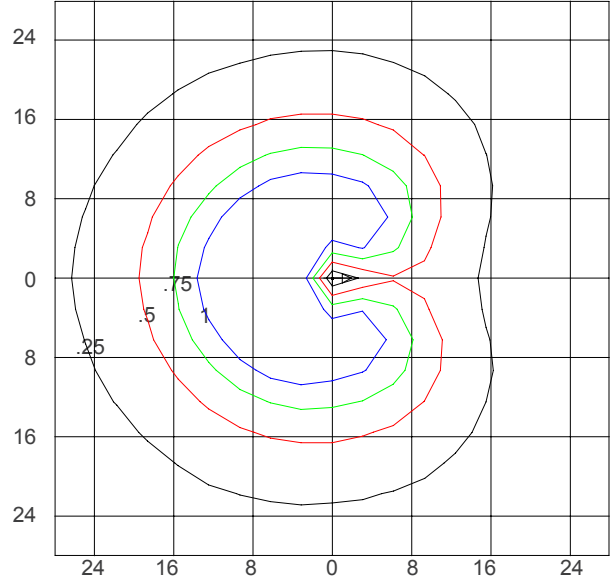


POLAR CANDELA PLOT (32W T8 LINEAR FLUORESCENT)



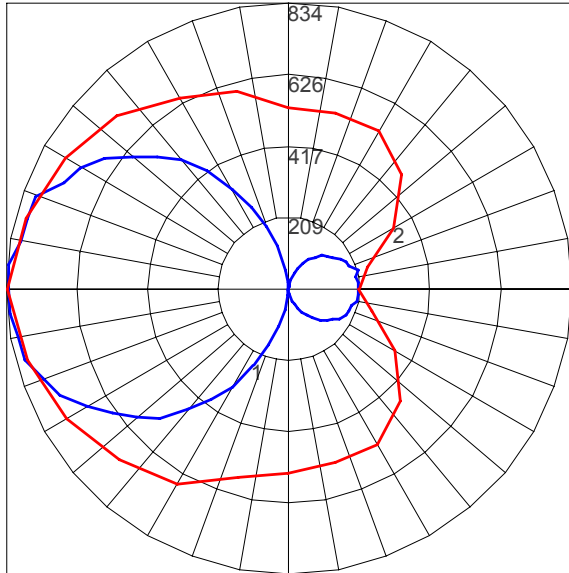
Maximum Candela = 644.05; Located at Horizontal Angle = 180; Vertical Angle = 90  
#1 - Vertical Plane Through Horizontal Angles (180 - 0) (Through Max. Cd.)  
#2 - Horizontal Cone Through Vertical Angle (90) (Through Max Cd.)

ISOFOOTCANDLE PLOT (32W T8 LINEAR FLUORESCENT)



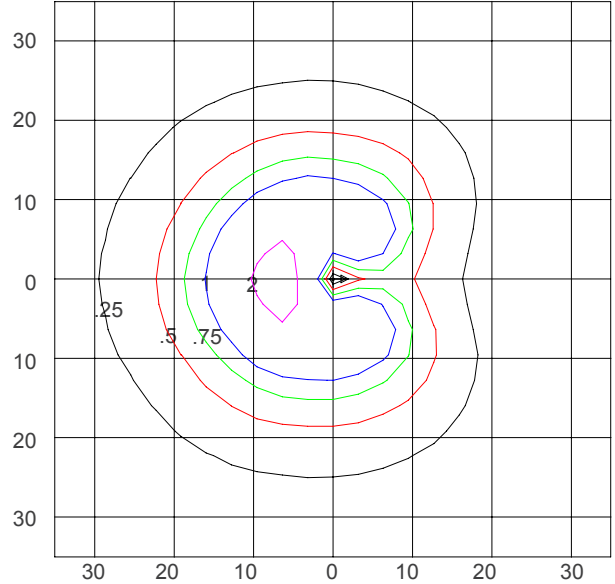
Isofootcandle Plot shows light distribution pattern at ground level with (2) 32W T8 linear fluorescent mini bi-pin base lamps with no shield. Readings have been taken assuming the photometric center of the luminaire to be 9.25 feet above ground level. IES files for standard lamps are available on our website.

POLAR CANDELA PLOT (48W T8/HO LINEAR FLUORESCENT)



Maximum Candela = 834.06; Located at Horizontal Angle = 180; Vertical Angle = 95  
#1 - Vertical Plane Through Horizontal Angles (180 - 0) (Through Max. Cd.)  
#2 - Horizontal Cone Through Vertical Angle (95) (Through Max Cd.)

ISOFOOTCANDLE PLOT (48W T8/HO LINEAR FLUORESCENT)



Isofootcandle Plot shows light distribution pattern at ground level with (2) 48W T8/HO linear fluorescent recessed double base lamps. Readings have been taken assuming the photometric center of the luminaire to be 9.25 feet above ground level. IES files for standard lamps are available on our website.