



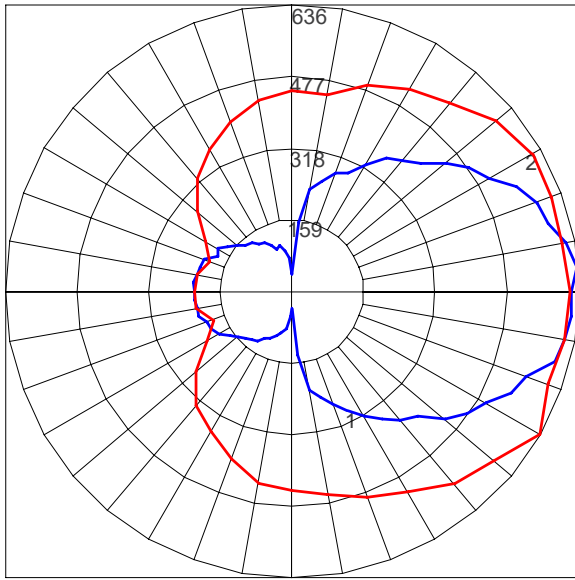
TRIO PEDESTRIAN

LAMP DESCRIPTIONS

LAMP	DESCRIPTION	BASE	COLOR TEMPERATURE	LUMINAIRE LUMENS*	B.U.G. RATING
(3) L22.5T8	22.5W T8 linear LED	Medium bi-pin	4,000K	4223	B1-U5-G3

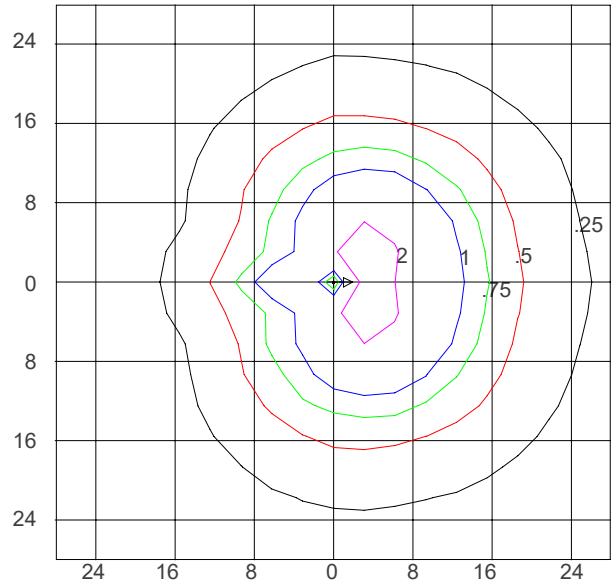
*Luminaire lumens represents the absolute photometry for the luminaire, and indicates the lumens out of the entire fixture.

POLAR CANDELA PLOT (22.5W T8 LINEAR LED)



Maximum Candela = 636.45; Located at Horizontal Angle = 330; Vertical Angle = 95
 #1 - Vertical Plane Through Horizontal Angles (330 - 150) (Through Max. Cd.)
 #2 - Horizontal Cone Through Vertical Angle (95) (Through Max Cd.)

ISOFOOTCANDLE PLOT (22.5W T8 LINEAR LED)



Isofootcandle Plot shows light distribution pattern at ground level with (3) 22.5W linear LED medium bi-pin base lamps. Readings have been taken assuming the photometric center of the luminaire to be 9.25 feet above ground level. IES files for standard lamps are available on our website.