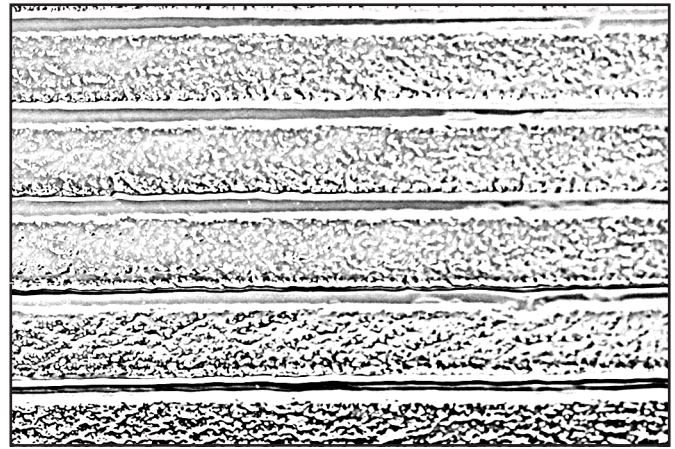
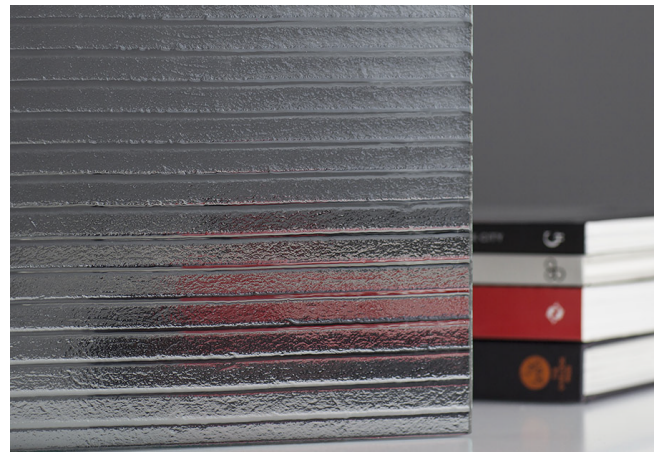


FULL SHEET PATTERN ORIENTATION

NOTE: THE ABOVE ILLUSTRATION IS FOR ORIENTATION ONLY.
ACTUAL PATTERN MAY VARY FROM PATTERN SHOWN.



DETAIL 1:1



SWATCH

PART #: 951-00018

MATERIAL: CLASSIC KILN CAST GLASS

PATTERN: GRANDE RAKE (horizontal)

SHEET DIMENSIONS: 53" X 108"
(1345mm x 2743mm)

SHEET THICKNESS*: _____

*Grande Rake is available in a variety of sheet thicknesses, which can impact the overall appearance of the texture. Shown in 1/4" (6 mm) thickness.

QTY: _____

APPROVED BY: _____

UNLESS OTHERWISE SPECIFIED, DIMENSIONS ARE IN INCHES		FORMS+SURFACES®		30 Pine Street, Pittsburgh, PA 15223 Tel(800) 451-0410 Fax(412) 781-7840	
TOLERANCES (UNLESS OTHERWISE SPECIFIED): FRACTIONAL: ±5/32 ANGULAR/BEND: ±1° TWO PLACE DECIMAL: ±.030 THREE PLACE DECIMAL: ±.020		NAME	DATE	DESCRIPTION: BERMANGLOSS	
MATERIAL: CLASSIC KILN CAST GLASS		DWN	JS 05/03/2016		
PATTERN: GRANDE RAKE		RVS	AS 07/17/2018		
WEIGHT: -		DO NOT SCALE DRAWING			
SOURCE: -		PROPRIETARY AND CONFIDENTIAL		THE INFORMATION CONTAINED IN THIS DRAWING IS THE SOLE PROPERTY OF FORMS+SURFACES. ANY REPRODUCTION IN PART OR AS A WHOLE WITHOUT WRITTEN PERMISSION IS PROHIBITED.	
SCALE: N.T.S		SIZE	DWG. NO.	REV	SHEET
		B		000	1 OF 1